



HIGH & RATTRAY
STS. DUNEDIN
Geo. Crow, Manager

CHILDREN'S JERSEYS AND SWEATERS

IN GREAT VARIETY AT THE

D.I.C.

ALL-WOOL SWEATER, to button on Shoulder, in Navy, Brown, Electric, Saxe Blue, Cardinal, and White—Size 1 2 3 4 5 6 7
Price 4/6 4/11 5/6 5/11 6/6 6/11 7/6

FINE ALL-WOOL JERSEYS—all colors, with Turn-down Collar and Buttoned Front
Size 2, 5/6; 3, 5/11; 4, 6/6; 5, 6/11; 6, 7/6; 7, 7/11.

POLO CAP to match—1/11.

McNab and Mason

Specialists In Monumental and
Church Masonry.

All Tablets and Tombs in
St. Patrick's Cathedral
Supplied by us.

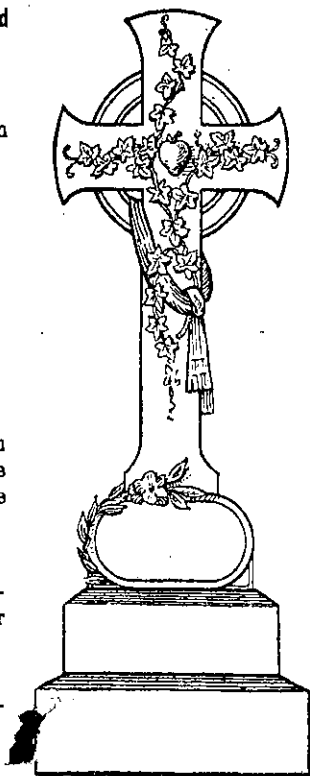
**Symonds Street,
Auckland.**

(Next St. Benedict's).

Not being connected with
the recently-formed combine
of Monumental Masons we
can still quote the

LOWEST PRICES
for all work in the Auck-
land, Gisborne, Taranaki or
Westland Districts.

Write for Illustrated Cata-
logue and Price List.
Post Free.



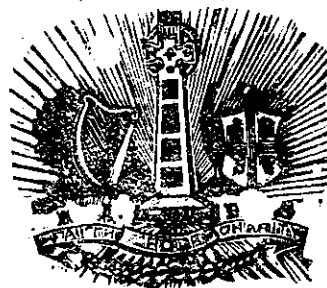
TELEPHONE 369.

THAMES HOTEL.

Corner QUEEN & CUSTOMS STS, AUCKLAND,

Buxton & Agnew, Proprietors,
Will be pleased to see all old friends, and glad to make
new ones. Best Accommodation for the Travelling
Public. Day and night porter.

TARIFF: 6s per day, or from 30s per week.



HIBERNIAN AUSTRALASIAN CATHOLIC BENEFIT SOCIETY.

NEW ZEALAND DISTRICT, No. 3.

The Catholic Community is earnestly requested to sup-
port this excellent Organisation, for it inculcates a love of
Holy Faith and Patriotism in addition to the unsurpassed
benefits and privileges of membership.

The Entrance Fees are from 2s 6d to £4, according to
age at time of admission.

Sick Benefits: 20s per week for 26 weeks, 15s per week
for the next 13 weeks, and 10s a week for the following 13
weeks. In case of a further continuance of his illness, a
member of seven years' standing previous to the commence-
ment of such illness will be allowed 5s per week as super-
annuation during incapacity.

Funeral Allowance: £20 at the death of a member,
and £10 at the death of a member's wife.

In addition to the foregoing, provision is made for the
admission of Honorary Members, Reduced Benefit Members,
and the establishment of Sisters' Branches and Juvenile
Contingents. Full information may be obtained from Local
Branch Offices, or direct from the District Secretary.

The District Officers are anxious to open New Branches,
and will give all possible assistance and information to
applicants. Branches being established in the various
centres throughout the Colonies, an invaluable measure of
reciprocity obtains.

W. KANE,
District Secretary,
Auckland.

JAS. SPEIGHT & CO.

MALSTERS AND BREWERS,

CITY BREWERY, DUNEDIN.



Found Everywhere.

Men's Tailor-Cut Sac Suits.

More Money has been Saved by the men of New Zealand through buying
and wearing our Celebrated TAILOR-CUT SAC SUITS than is probably
due to any other single cause. A big Stock to select from, a big range
of fittings for Long, Short, Stout, or Slim Figures, a big choice of Tweeds,
Serges, and Worsteds. There's not the least doubt but that we can Fit
and please you. The Prices range from 47/6 to 73/6. You may Inspect them without obligation.

New Zealand Clothing Factory.

Branches Throughout New Zealand,