

Combine Economy, Perfect Fit and Satisfaction by Ordering your Next Suit from—

- J. A. O'BRIEN -

The Leading Tailor

45 Dowling Street

One Trial will mean Permanent Order.
Clerical Trade a Specialty.

HELEN E. BEVERIDGE

GEORGE STREET, DUNEDIN.
Is now showing a fine range of Costumes, in Mosgiel and Roslyn Tweeds. Fit and style guaranteed.

Millinery Department—Replete with all the latest Novelties. Inspection invited. New Veiling, new Blouses, new Belts; all Fancy Drapery.

**Clearing Sale of Toys
at Rew's**

We had some very nice Toys left over at Christmas, which we purpose clearing out at greatly reduced prices

DURING EASTER.

These are a few of the lines—

Mechanical Trams, Engines, Trains
Sets of Blocks Enamelled Tea Sets,
Sets of Carpenters' Tools, Sets
Dolls' Furniture, Noah's Arks,
Drawing Slates, Motors, Magic
Lanterns, Dolls (both dressed and
undressed), Watering Cans, etc.,

**ALL AT GREATLY REDUCED
PRICES.**

Watch Our Windows for Prices.

ROBERT REW

GENERAL PROVIDER
QUEEN ST & NEWTON.
AUCKLAND.

For Comfortable,

Easy Wearing,

Up-to-Date

Boots and Shoes,

TRY—

W. D. McLEOD

31 VICTORIA STREET,
(Opp. Royal Hotel),
AUCKLAND.

Established 1884.

Boots repaired at shortest notice.

HUGH GOURLEY

desires to inform the public he still continues the UNDERTAKING BUSINESS as formerly at the Establishment, corner CLARK AND MACLAGGAN STREETS, DUNEDIN.

Funerals attended in Town or Country

When your Produce is Ready for Sale send it to us

No matter what your produce is—whether oats, wheat, barley, chaff, potatoes,—if you want to dispose of it at top prices, send it along to us.

Each week we hold an auction sale of produce, which enables us to sell consignments at the most favorable time and under the very best conditions.

The sales are attended by representatives of all the leading produce dealers in the city. They openly compete for the purchase of your consignment, and thus you are sure of getting the best price it can command in the market.

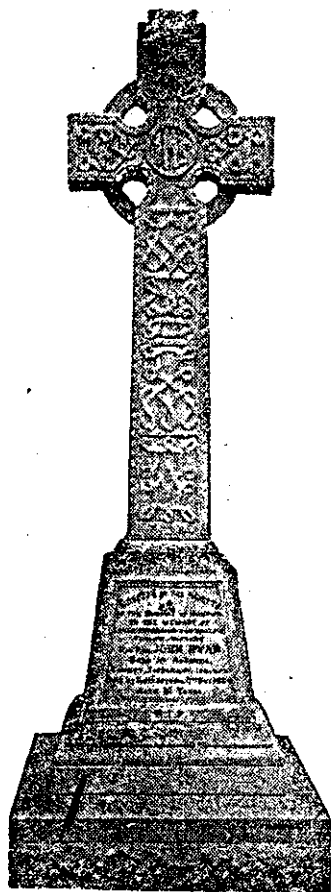
If you prefer to store your produce for a time, our warehouse is safe, dry, clean, and roomy; centrally situated and connected to railway by private siding. Buyers and sellers both find the siding of great advantage in the handling and accurate weighing of consignments.

We have expert valuers, who can be depended upon to look after your best interests.

When desired, we can make liberal cash advances on your consignments. Any information gladly given. Sample bags, advice notes, and labels sent on application.

DONALD REID & CO. Ltd.

OTAGO CORN AND WOOL EXCHANGE,
VOGEL, JETTY, & CUMBERLAND STREETS, DUNEDIN.



ERECTED TO THE MEMORY OF THE
LATE REV. JOHN RYAN.

EXECUTED BY H. FRAPWELL.

Frapwell and Holgate

-- Monumental Sculptors --

PRINCES STREET SOUTH,
DUNEDIN.

Direct Importer of Marble and
Granite Monuments.

Designs and Estimates on application.
Country Orders promptly attended to.



To a meal unless it includes a cup
of that delicious beverage

"KUKOS" TEA

This Tea can be obtained from the leading Grocers and Storekeepers throughout Otago and Southland, and is, without doubt the VERY BEST. It is put up in four qualities, packed in 1lb. and 1/2lb. packets, and 5lb. and 10lb. tins.

G



R.

CASSIDY and CO.
TELEGRAPH LINE OF ROYAL
MAIL COACHES.

LEAVE BROKEN RIVER on arrival of West Coast Express every TUESDAY, THURSDAY, and SATURDAY, carrying mails and passengers for Otago, Kaimata, Hokitika, Greymouth, Reefton, and Westport. Arriving GREYMOUTH SAME DAY. Passengers can obtain through Tickets at Railway Station.

WARNER'S HOTEL, LTD.,

Christchurch Agents.

CASSIDY AND CO., Proprietors.

Good Books for Good Catholics

We have a Nice Assortment of
ROSARY BEADS

CRUCIFIXES

R.C. PRAYER BOOKS

(Key of Heaven, Garden of the Soul,
etc.)

And Some Nice

RELIGIOUS PICTURES.

ALEX. SLIGO

24 George St. Dunedin, And at South Dunedin