

ance and English; Mavis Noton, for general proficiency; Ada Wells, for drawing.

Standard VI.—Dorothy O'Leary, for music; Kathleen Kalaugher, for regular attendance and general proficiency; Maude Parker, for recitation and composition; Madge Davis, for amiability; Bertha Pitts, for writing; Ida Seagar, for drawing.

Standard V.—Dorothy Mountain, for singing and general proficiency; Ida Clements, for arithmetic; Irene Noton, for Christian doctrine and arithmetic.

Standard IV.—Florence Mountain, for English.

Standard III.—Muriel Ching, for drawing; Gladys Baskiville, for singing an general proficiency; Violet Jarman, for writing; Eileen Quirke, for reading and recitation.

Standard II.—Doris Otto, for recitation and general proficiency; Maude Enwright, for amiability; Gwen Mountain, for general improvement; Dolly Kelly, for general proficiency.

Standard I.—Kathleen Whelan, for reading and recitation; Ideal Beaton, for arithmetic; Millicent Parker, for general proficiency; Sibyl Wilson, for general improvement; Tua Greig, for drawing; Hilda Blackwood, for general improvement; Irene Considine, for Christian doctrine and English; Marjery Henderson for writing; Lindsay Blackwood, for reading and recitation; Thomas Morrison, for arithmetic.

Primer II.—Barbara Hodgson, for recitation; Constance Halpin, for writing; Willie Parkinson, for reading; Vincent Noton, for tables; Willie Whelan, for singing; Philip Goldwater, for spelling; Lorna Wrigley, for drawing; Huia Le Sel, for general improvement.

Primer II.—Nora Mountain, for reading; Ivy Considine, for tables; Lilian Lawes, for singing; Lillah Dixon, for spelling; Mary Mulholland, for general proficiency.

Primer I.—Robert Halpin, for good conduct; Carson Shea, for singing; Kathleen Brady, for spelling; Letitia Gilfeder, for reading; Annie Greig, for writing; Nance Quickfall, for general improvement; Jean Stoupe, for paper-weaving; Emily Lane, for general improvement; Jean McCallum, for tables; Vertrix Cox, for general improvement; Ida Mann, for neatness; Nita Ching, for general improvement; Sibyl Davis, for general improvement.

Musical successes (Trinity College practical examinations).—Divisions: High local, Mary Rose Coyne; senior advanced, Emily Graham; junior, Madge Davis, Jessie Seagar, Nellie Oxtan, Irene Noton; preparatory, Doris Otto, Dolly Kelly, Isabel Harkins, Doris Wheeler, Ida Clements.

Music (theoretical).—Senior advanced, Mary Rose Coyne, Marie Boylan; intermediate, Maude Parker; lower division, grade 2, Dorothy Richards, Mavis Noton; lower division junior, Irene Noton, Nellie Noton; preparatory, Florence Moore, Flora Brahne, Madge Davis, Clement Woodall, Ida Clements.

Music (Auckland University).—Associate, Mary Rose Coyne; senior, Noel Pacey, Gwendoline Wrigley; intermediate, Dorothy Mountain, Dorothy O'Leary; preparatory, Essie Thompson, Dorothy Whitehead, George Greig.

Bessie found getting well much more tiresome than being sick. She was becoming very impatient about staying indoors and eating soups.

When her aunt asked her how she felt she replied that she was much worse; that doctor had found something else the matter with her.

'Why, what is it?' asked her aunt.

'I think the doctor said "convalescence."'



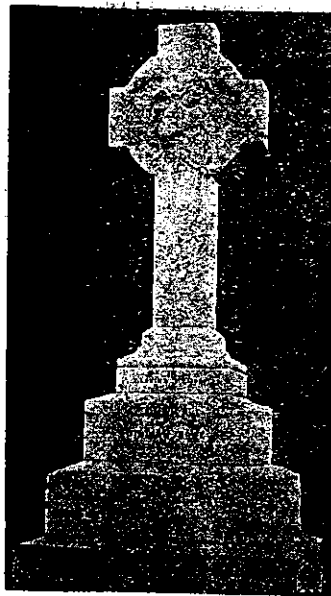
Love Is Pictured as a Boy.

By artists and poets. 'Tis he who turns men's heads and thoughts to betrothal rings to adorn his lady's hand. Then 'tis only natural for him to think of DUNN's, for there will be found a well-assorted choice of jewelled rings in every style. Especially pleasing are the ruby and diamond, and emerald and diamond cluster rings at £12 10s. Also splendid value in ruby and diamond and sapphire and diamond half-hoop rings at £5.

F. J. DUNN

THE CORNER JEWELLERY
STORE,

STAFFORD and BESWICK STS.,
TIMARU.



H. S. BINGHAM & Co.
(LIMITED.)

(LATE G. MUNRO & SON)

MORAY PLACE (near King St.)
DUNEDIN.

Monuments erected, cleaned or repaired
in any Cemetery.

Inscriptions engraved.
Concrete Kerbing and Iron Railings.

"K" Brand of Oamaru Stone in any
quantity, supplied from our Quarries at
Teschemakers.

Architectural and General Building
Masonry.

**YOU
WILL
SAVE
MONEY**

You will save money on
furniture when you buy it
here, and secure at the
same time, the newest
styles and the best quality.

We employ expert work-
men, so that the workman-
ship and finish of our fur-
niture may be perfect.

It's to your interests to
inspect our furniture.
Better do it soon.

J. RADCLIFFE

FURNITURE MANUFACTURER,
TIMARU.