

# F. J. JONES

MONUMENTAL SCULPTOR,  
AND GRANITE MONUMENTS. DIRECT IMPORTER OF MARBLE  
OPP. POST OFFICE, FEILDING.

A Large Selection of Marble and Granite Memorials always in Stock.  
Concrete Walls, Iron Fences, and every class of Cemetery Work  
executed at Lowest Charges.

Workmanship and Material Guaranteed.

## FURNITURE.

YOU ASK THE QUESTION . . .

**"What is Good Furniture?"**

Our Stock gives the Answer, and clinches the difficulty of

**Where to Buy at Lowest Rates.**

## AITKEN & EVANS

BEST VALUE HOUSE FURNISHERS,  
KIMBOLTON ROAD, FEILDING.

## Thos. Griggs and Son

BUILDERS AND  
FUNERAL DIRECTORS.

All kinds of Jobbing Work, Joinery  
Shop Fittings, Etc.

*Funeral Furnishing a Speciality.*  
*Catholic Mortuary Habits Stocked.*

A Large Variety of WREATHS and  
TABLETS for Ornamenting Graves.

17 MAIN STREET,  
PALMERSTON NORTH.

Telephone 45.

FOR PUREST DRUGS

and

ACCURATE PRESCRIPTION  
WORK Try—

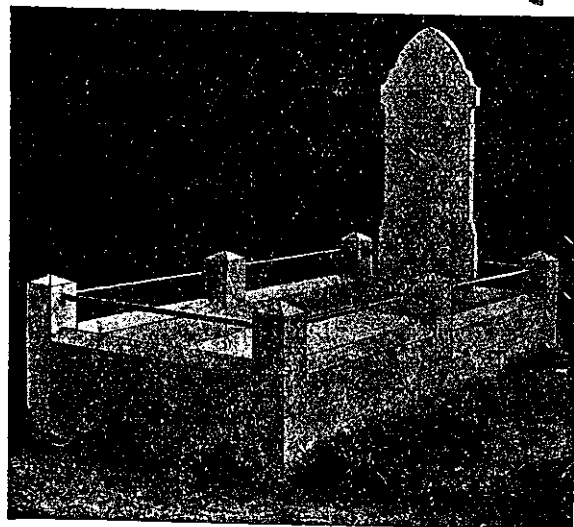
F. AND R. CAMPBELL.

Prescriptions dispensed from any  
Physician.

All Charges Reasonable.

## F. & R. CAMPBELL

PRESCRIPTION CHEMISTS  
AND OPTICIANS,  
RED CROSS PHARMACY,  
FEILDING.



## T. G. Hoar

MONUMENTAL &  
ARTISTIC  
SCULPTOR,  
MASTERTON.

Monuments erected and  
no Payment required before  
completion.

Write for Design.  
Best Material.  
Lowest Prices.

To the Residents of Thorndon, Kel-  
burne, Creswick, Northland, and  
Karori.

## W. C. Hampton

BUTCHER,  
TINAKORI ROAD,  
WELLINGTON.

Is prepared to deliver to any of the  
above districts daily  
primest Spring Lamb, Mutton, Veal,  
and Pork

At Lowest Prices. Small Goods a  
Specialty.

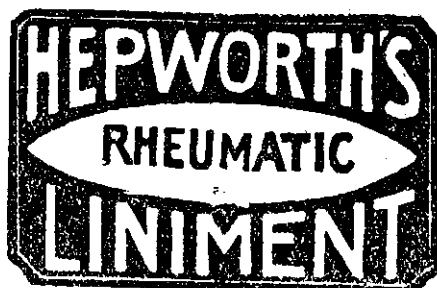
All Meat killed under Government  
Inspection at the Municipal Abattoir  
Phone 1712.

## W. URQUHART

THE POPULAR CASH DRAPER,  
157, 159 RIDDIFORD ST., NEWTOWN.

*Our Goods the Best!*  
*Our Prices the Cheapest!!*  
*Buy Right Here!!!*

Telephone 3064.



Are You using . . .  
**HEPWORTH'S**  
**LINIMENT?**

A Sterling Remedy for all  
Aches and Pains. An old and  
tried application.

Get a bottle now, and prove  
. . . it . . .

1/6—per bottle—2/6  
4d extra postage.

H. HEPPWORTH,  
CHEMIST (By Exam.),  
PALMERSTON NORTH.