

# THE N.Z. EXPRESS CO.

LIMITED,

(CAMPBELL AND GRUST.)

DUNEDIN, INVERCARGILL, GOREA,  
CHRISTCHURCH, WELLINGTON,  
DAMARU, AUCKLAND, & LYTTELTON

GENERAL CARRIERS, CUSTOMS  
SHIPPING & EXPRESS FORWARDING  
AGENTS

PARCELS FORWARDED to any part of  
the World.

FURNITURE Packed and Removed by our  
own men throughout New Zealand.

ADDRESS: CRAWFORD STREET.

BOTTLED ALE & STOUT.

SPEIGHT'S CELEBRATED

**PRIZE ALES & STOUTS.**

BOTTLED BY

**Messrs. Powley & Keast**

HOPE STREET,

DUNEDIN.

Sottlers, Wine & Spirit Merchants.

Country Orders Punctually attended to,  
Order through Telephone 979.

Sole Agents in Dunedin for A. B. Mackay  
"Liqueur" Whisky.

Agents for Auldana Wines (S.A.)

Corks, Tinfoil, Wire, Syphons, and all Bottlers  
Requisites in Stock.

## Ladies!

Do you want better  
recommendation than this:

**180,000 Bottles**

**THE MILITARY PICKLE**

Sold in London last year.



**Buy One Bottle To-day**

**W. WOLLAND,**  
**FAMILY BUTCHER**  
42 Tory St., Wellington.

Only Government Inspected Meat Sold.  
TRIAL SOLICITED.

ESTABLISHED 1880. TELEPHONE No. 69

**BAKER BROTHERS,**  
FURNISHING UNDERTAKERS,  
ASHBURTON.

Direct Importers of Best and Latest  
Designs in Funeral Furnishings.

FUNERALS Conducted with the greatest  
Care and Satisfaction, at the most  
Reasonable Charges.

Corner of Wakarua Road and Cass  
streets, and Baker and Brown's Coach  
Factory.

## Notice of Removal.

**R. MILLIS & SON,**

General Engineers & Machinists,

19 BATH STREET,

DUNEDIN

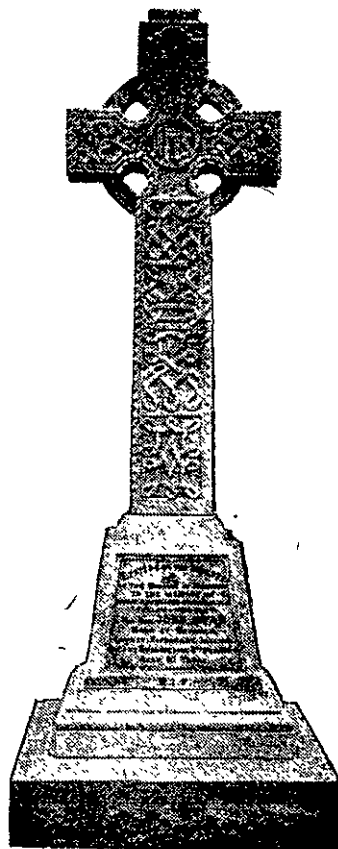
**H**AVE pleasure in intimating to their  
Customers that they have SHIFTED  
INTO THEIR NEW AND UP-TO-DATE  
WORKSHOP, which is being equipped  
with Machinery and Tools of the Very Best  
Class, which will enable them to turn on  
work to their Customers' and their own  
satisfaction.

Please ..... } 19 Bath Street  
Note Address } Telephone No. 506.

**R. T. Pope,**

THE LEADING DRAPER,  
KAIKOURA.

Keep your eye on this house and your  
mind on our Bargains.



ERECTED TO THE MEMORY OF THE  
LATE REV. JOHN RYAN.

EXECUTED BY H. FRAPWELL.

**Frapwell and Holgate**

.. Monumental Sculptors ..

PRINCES STREET SOUTH,  
DUNEDIN.

Direct Importer of Marble and  
Granite Monuments.

Designs and Estimates on application.  
Country Orders promptly attended to.

**This Eureka Suit Made  
to Measure for 45s.**



You come in, select  
your material, and we  
make to your own mea-  
sure. The Coat is well  
padded and quilted,  
Trousers fashionably cut  
and all well-finished  
throughout.

If you can't call, write  
for Patterns and Self-  
measurement Chart.

A big range of the  
latest Patterns just in.

Satisfaction Guaranteed.  
Call or Write To-day.

**TRIBE & CO.,**

HIGH STREET, CHRISTCHURCH

**ASK FOR  
BONNINGTON'S.**

Unscrupulous firms wishing to trade  
on the great reputation of Bonnington's  
Irish Moss, prepare an imitation of the  
genuine article, and, so that you may  
be deceived, follow the design of our  
package as near as possible.

The value of such a remedy is best  
gauged by the methods its makers  
employ, and you take a big risk if you  
purchase it.

**BONNINGTON'S  
CARRAGEEN  
IRISH MOSS**

the standard Cough and Cold Remedy  
that has stood the test for forty-five  
years.

Stand for fair honest trading, and  
insist on getting BONNINGTON'S.

**REFUSE SUBSTITUTES.**

The "just as good as Bonnington's"  
is not good enough for you, and, if a  
retailer tries to sell you an imitation or  
a substitute, tell him you want BON-  
NINGTON'S IRISH MOSS, ask for  
it again, and insist on getting it.

**PATENTS and TRADE MARKS**

obtained in all countries by

**HENRY HUGHES, International  
Patent Agent.**

Dunedin Office, A.M.P. Buildings, Princes St  
T. H. THOMPSON, Local Agent.  
Telephone 1708. Handbook on Application.  
Correspondence promptly attended to.