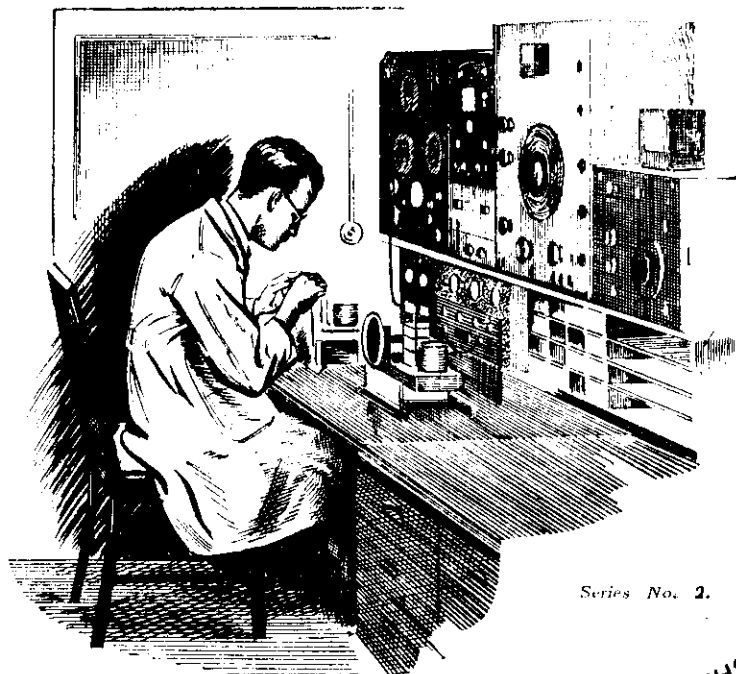


Why "Columbus" Build *Better* Radios

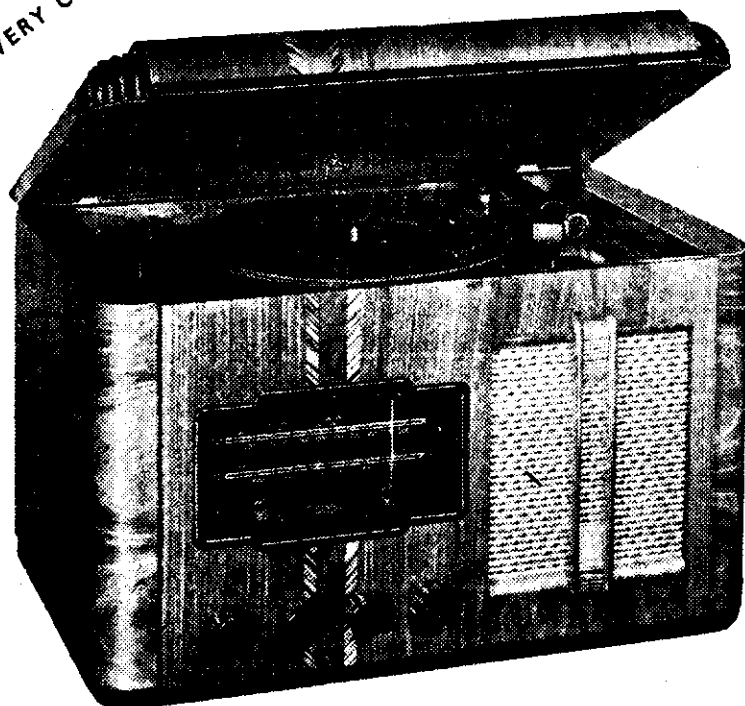
THE RESEARCH ENGINEER

In the creation of a Columbus test model or prototype the research engineer is again concerned in two special factors. Perfection in performance and the reliability and suitability of component parts. To this end he tests each component for lasting qualities under circumstances which parallel customer usage. When the chassis is assembled and up to approved Columbus standards, the research engineer then adapts it to a cabinet—a cabinet which is designed (and often re-designed) to give full value to the acoustic capacity of the set itself—for it must be remembered that the cabinet of a radio is as complementary to its chassis, as the body of a violin is to its strings.



Series No. 2.

EVERY COLUMBUS RADIO OR RADIOGRAMPHONE IS UNCONDITIONALLY GUARANTEED FOR TWELVE MONTHS



PENNANT

Approved and acclaimed on all points of appearance and performance.

6-Valve dual wave Radiogram, having an 8-inch speaker.

Fitted with Extension Speaker Terminals.

Height 15½in, Width 22in, Depth 14in.

Ask for your favourite tunes on CAPITOL, TANZA, TASMAN, LONDON, ARTRANSA and ORIOLE recordings.

COLUMBUS

RADIO

PRODUCT OF RADIO CORPORATION OF
NEW ZEALAND LIMITED

A National Organisation with COLUMBUS RADIO CENTRES throughout the Dominion and accredited dealers everywhere.