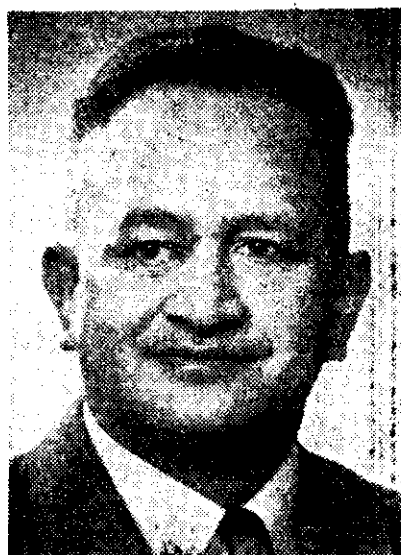


★ PEOPLE IN THE PROGRAMMES ★



Spencer Digby photograph
W. T. NGATA, speaker in the "What's in the Name?" series now being heard from 1YA on Tuesdays and Thursdays at 6.16 p.m., and from 3YA on Mondays and Thursdays at 5.25 p.m.



AT LEFT: Margaret Mouchmore, who plays Flossie Marlowe in "Christine Marlowe's Daughter," the Francis Parkinson Keyes story now on the air from the ZBs at 7.0 p.m. on Saturdays



THE AUCKLAND STRING PLAYERS, conducted by Georg Tintner and led by Ina Bosworth, who will give the inaugural concert of the Auckland Music Festival, broadcast from 1YC at 8.30 p.m. on Thursday, June 7 (see page 9)

N.Z. LISTENER, JUNE 1, 1951.

The WORLD'S BIGGEST SONG HITS

"OUR LADY OF FATIMA"
(Religious Popular Song)

"THE RIVER SEINE"

"BE MY LOVE"

"ON THE OUTGOING TIDE"

"SILVER DOLLAR"

"THE HOLLYWOOD SQUARE DANCE"

"THE CRY OF THE WILD GOOSE"

"THE OLD MASTER PAINTER"

"THE BIRTHDAY WALTZ"

"WHEN THE HEATHER GLEAMS LIKE STARDUST (in the Glen)"

"I'VE GOT A LOVELY BUNCH OF COCONUTS"

"Johnson Rag," "Daddy's Little Girl," "Wilhelmina," "Forever and Ever," "My Foolish Heart," "Best of All," "C'est si Bon," "The Green Cockatoo," "Thine Alone"

EACH SONG PRICE 2/- PER COPY.

ALL MUSIC SELLERS

Or direct from the publishers,
J. ALBERT & SON PTY., LTD.,
2-4 Willis Street, Wellington.

An Aching Back

As most people know at one time or another, an aching back can be a great trial. Pains in the small of the back, joint and muscle pains and many other rheumatic symptoms, may be caused by sluggish kidney action leaving impurities in the system. Proper elimination of waste matter by healthy kidneys is as important a function as correct bowel action.

A few De Witt's Pills taken occasionally will help to keep you fit in more ways than one. Not only do they assist sluggish kidneys back to normal, but they also have a soothing and cleansing action on the whole of the urinary channels.



De Witt's PILLS

can be used with every confidence

A product of E. C. De WITT & Co. (N.Z.) Ltd.
4, Market Street, Wellington, New Zealand