



Spencer Digby photograph

Facing the Music

LISTENERS who pride themselves on their musical knowledge will have an opportunity to put it to the test when they listen to *Facing the Music*, an NZBS musical quiz, which begins from YAs, 3YZ and 4YZ, next Sunday, October 11, and later from 1YZ and 2YZ.

In this series, which consists of six programmes each a half hour in duration, a chairman-quizmaster, Peter Zwartz, puts all manner of musical questions to a permanent panel of four—writer and critic Bruce Mason, amateur musician Margaret Campbell, lecturer Pat Macaskill, and D. W. McKenzie of the Monday night YA programme *Talking About Records*. In addition to this panel, a guest musician will be invited for each session; in the first of the series it is the violinist and conductor Alex Lindsay.

With the exception of a round dealing with popular songs filched from the classics, all the questions were devised by Peter Zwartz and deal exclusively with serious music. The panel must recognise compositions, and also composers—both the well-known and obscure. They have to identify instruments; and animals and literary characters, cities and countries, by suitably associative music.

Though there is no precise format to the programmes, each will contain six or seven rounds devoted to separate subjects. The panel is divided into two

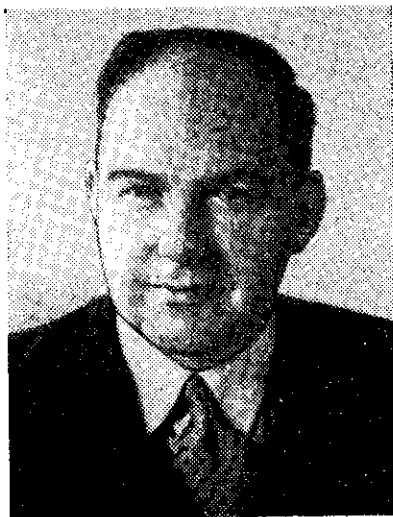


Spencer Digby photograph

PETER ZWARTZ, chairman and quiz-master. ABOVE: Margaret Campbell and Bruce Mason. FOOT OF PAGE: D. W. McKenzie (left) and Pat Macaskill

teams to make for competition, Margaret Campbell and Bruce Mason opposing Pat Macaskill and Don McKenzie, and marks are awarded to each team by the Chairman, according to the way the questions are answered.

"We have borne in mind the fact that listeners themselves may like to join in, so the difficult excerpts are given a longer playing time than might otherwise be necessary," says Peter Downes, producer of *Facing the Music*. "The programme is not meant to be a serious investigation of the panel's musical knowledge, it is devised primarily to entertain rather than to edify."



N.P.S. photograph

MAGIC

Write to us now! Regarding a complete act for you to start entertaining your friends and be the life of the party. Write for our fully illustrated catalogue, 3/-. Post Free.

DON'S MAGIC SHOP LTD.,
Dept. L, Box 1417, Christchurch. D9

HUSBANDS AND WIVES' GUIDE

A frank and confidential booklet for married people only. Sent in plain wrapper free. Write today.

GEORGE BETTLE, Chemist,
P.O. Box 531, Christchurch.

MANLY

Inches off your waist instantly!

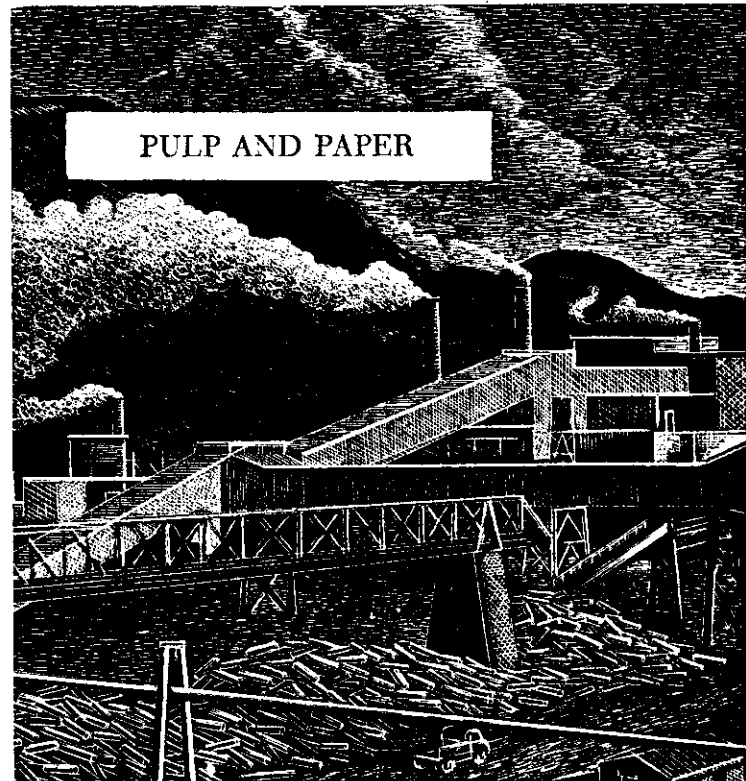
FLATTENS front
SUPPORTS back
IMPROVES posture
SMARTENS looks
and SLIMS!

ONLY the "Manly" will INSTANTLY pull in your waist 3-5in. INSTANTLY relieves fatigue backache, lumbago, sciatica. INSTANTLY feel fitter, look smarter. Finest 2-way Stretch Washable Elastic Fabric (Pre-Shrunk). ALL-DAY comfort, sitting, standing, playing. Extra detachable Supporter FREE. Hundreds of delighted testimonials.



Send 60/-. State waist size (next to skin), to
General Medical Supplies, 152 Hereford
Street, Box 1547, Christchurch.

PULP AND PAPER



Few, if any New Zealand enterprises, can claim such rapid and realistic contributions towards our national economy and domestic wellbeing as can the relatively recently developed pulp and paper industry.

Whereas, in 1953, revenue from the export of wood-pulp and newsprint amounted only to £176,682, by 1958 just five years later, realisations from these same two items had soared to £5,352,898! From these figures one can gauge the great amount of our overseas funds that have been saved. Within this industry more than 2,000 persons are gainfully employed. Around this industry towns and centres such as Tokoroa, Kawerau and Murupara provide living, learning and livelihood facilities for many hundreds more. New roads . . . new railheads . . . new port amenities . . . new power projects and research into untapped power potentialities, all have resulted from the expansion of this major New Zealand industry—one which, without New Zealand's policy of planned forestry, would not, could not exist.



Forestry is forever

Inserted in the interests of forest protection
by the New Zealand Forest Service.

FS9.1