

Theatre's Brightest Partnership!

Gilbert and Sullivan OPERA SEASON

*Fresh, delightful as always . . .
Their humour never dates . . .*

J. C. Williamson Theatres Ltd.

proudly present, by permission of Bridget D'Oyly Carte, FIVE of the most popular Savoy Comic Operas in the series.

NEW ZEALAND ITINERARY and REPERTOIRE

NORTH ISLAND:

Palmerston North (Opera House)

"The Mikado," Mon.-Tues., May 20-21. "The Gondoliers," Wed., May 22, Matinee and Evening. "The Pirates of Penzance," preceded by "Trial by Jury," Thurs., May 23.

Wellington (Grand Opera House)

"The Mikado," Fri., May 24, to Mon., June 3 (9 days). Matinees: Sat., Wed., Sat., at 2 p.m. (Plans at D.I.C.) "The Pirates of Penzance," preceded by "Trial by Jury," Tues., June 4, to Fri., June 7 (4 days). Matinee, Wed., 2 p.m. "H.M.S. Pinafore," preceded by "Cox and Box" (5 days), Sat., June 8, to Thurs., June 13. Matinees, Sat. and Wed. "Yeomen of the Guard," Fri., June 14, to Tues., June 18 (4 days). Matinee, Sat. "The Gondoliers," Wed., June 19, to Wed., June 26 (7 days). Matinees, Wed., Sat., Wed., 2 p.m.

Preferential Booking: For any one or more of the operas as advertised, including matinees, will be received at 20/- per seat inclusive (children half price to matinees). Please make cheque or money order payable to your local booking office and enclose stamped addressed envelope with application.

Other Bookings: All price seats on sale in all situations six days ahead of the opening performance.

PRICES: 5/11, 8/7, 13/6, 16/9, inclusive of tax and booking fee.

"A PRECIOUS GIFT FROM A PAST ERA"

GILBERT and SULLIVAN OPERAS

Touring Manager, LIONEL LEARY

SOUTH ISLAND:

Christchurch (Theatre Royal)

"The Mikado," Thurs., June 27, to Thurs., July 4 (7 days). Matinees Sat. and Wed., 2 p.m. (Plans at D.I.C.) "The Pirates of Penzance," preceded by "Trial by Jury," Fri.-Sat., July 5 and 6 (2 days). Matinee, Sat., 2 p.m. "H.M.S. Pinafore," preceded by "Cox and Box," Mon., July 8, to Thurs., July 11 (4 days). Matinee, Wed. "Yeomen of the Guard," Fri., July 12, to Sat., July 13 (2 days). Matinee, Sat., 2 p.m. "The Gondoliers," Mon., July 15, to Sat., July 20 (6 days). Matinees, Wed. and Sat., 2 p.m.

Dunedin (His Majesty's Theatre)

"The Mikado," Mon., July 22, to Thurs., July 25 (4 days). Matinee, Wed., 2 p.m. (Plans at D.I.C.) "The Pirates of Penzance," preceded by "Trial by Jury," Fri.-Sat., July 26-27 (2 days). Matinee, Sat., 2 p.m. "H.M.S. Pinafore," preceded by "Cox and Box," Mon.-Tues., July 29 and 30 (2 days). "The Gondoliers," Wed., July 31, to Sat., Aug. 3 (4 days). Matinees, Wed. and Sat., 2 p.m.

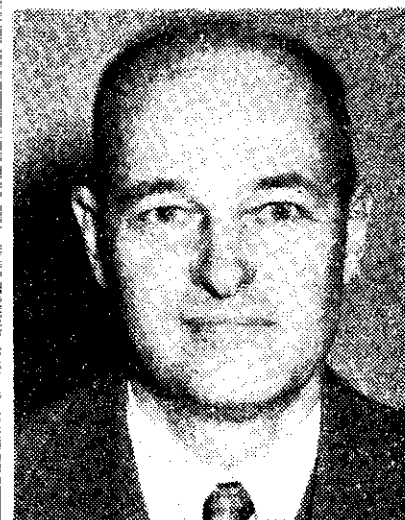
Invercargill (Civic Theatre)

"The Gondoliers," Mon.-Tues., Aug. 5 and 6 (2 days). Matinee, Wed., Aug. 7, at 2 p.m. (Plans at Chas. Begg Ltd.) "H.M.S. Pinafore," preceded by "Cox and Box" (2 days), Wed. and Thurs., evenings, Aug. 7 and 8. "The Mikado," Fri. and Sat., Aug. 9 and 10 (2 days). Matinee, Sat., 2 p.m.

Oamaru "The Gondoliers," Mon. evening only, Aug. 12. Plans at Chas. Begg Ltd.

Timaru "The Mikado," Tues. evening only, Aug. 13. "The Gondoliers," Wed. afternoon and evening, Aug. 14. Plans at Chas. Begg Ltd.

BOOKS



GEORGE KENNAN
Fruits of rustication

(continued from previous page)

thought and argument and nervous energy of Mr Kennan have been diverted from the making to the writing of history.

—R.H.B.

TREES AND SHRUBS

NEW ZEALAND NATIVE PLANT STUDIES, by William C. Davies; A. H. and A. W. Reed, 47/6. **SHRUBS AND TREES FOR AUSTRALIAN GARDENS,** by Ernest E. Lord; Lothian Publishing Co., £6/15/- Australian price.

THE remarkable photographs of New Zealand native plants, mostly in flower, shown in the 140 plates in a most carefully produced book, were taken by the late William C. Davies, Foundation photographer and Curator of the Cawthron Institute, Nelson. He died before he had finished writing the botanical descriptions of all the plants; the Cawthron Institute has now sponsored the publication, and Dr H. H. Allan has added the missing notes.

The photographs are so expertly taken that it is possible for a novice to identify many of the flowers and plants from them, and even to form an accurate idea of the size of the flower or leaf photographed. The only possible small improvement to this excellent work might be the addition of the usual guide to the degree of magnification or reduction from life size in each photograph.

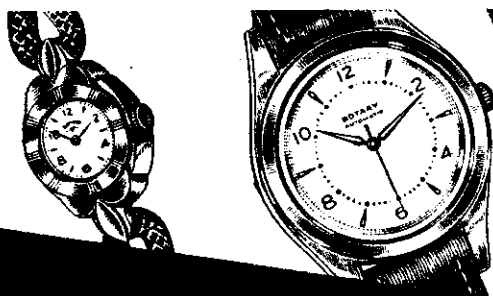
Mr Lord's expensive and large book on shrubs and trees for Australian gardens is a third and revised edition of a full guide, with many excellent colour plates and photographs, to a huge list of subjects—5000 common names are included in the index—for various conditions of soil and climate. It includes pruning and growing advice and chapters on numbers of specialised subjects. At this price it is probably beyond most home gardeners' purses; but it should be a popular reference book in libraries.

—J.

TAIHAPE MUNICIPAL BAND INC.

The above Band require
A BAND CONDUCTOR

Applications may be made to the undersigned: J. H. C. PARKER, Secretary, Houtapu Street, Taihape.



ACCURACY and DISTINCTION
at a REASONABLE PRICE

ROTARY

SWISS WATCHES

Ask your Jeweller for
ROTARY — by name.

R4