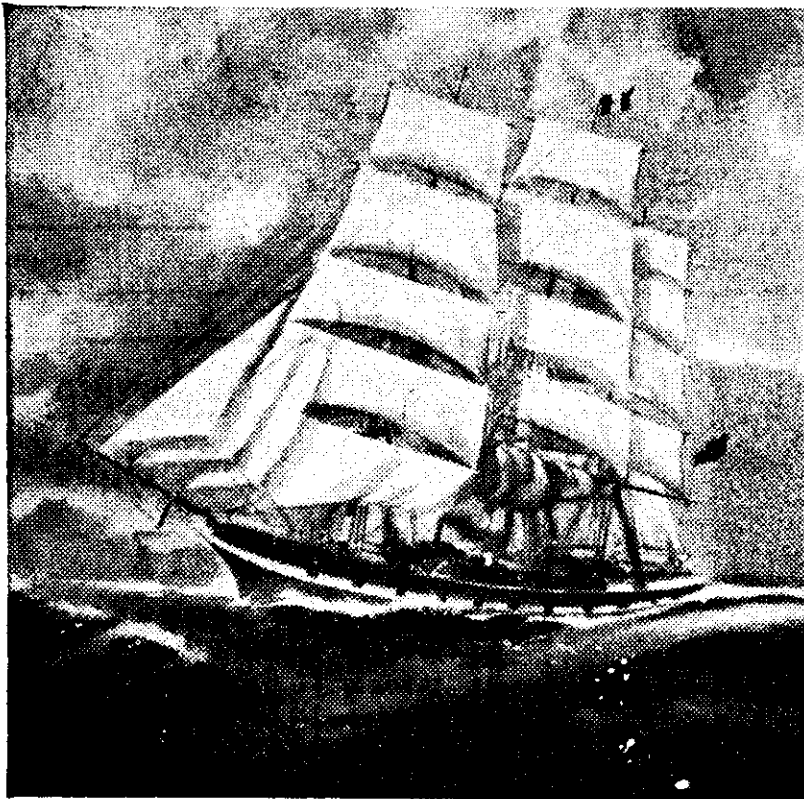


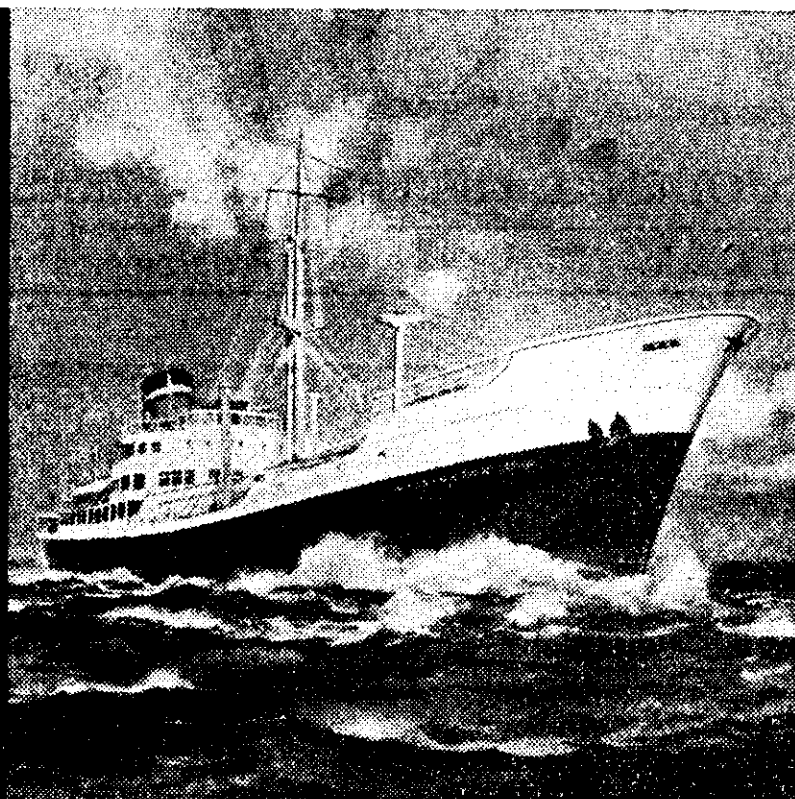
Partners in Progress

For 75 years, the New Zealand story has been one of continuous enterprise, progress and achievement; and in all that has been done, the ships have been your willing partners and your faithful servants. Indeed, this story of success may well be said to have begun with a ship.



DUNEDIN

The Albion Shipping Company's Clipper "Dunedin" (1,200 tons) sailed from Port Chalmers February 15th 1882, arrived London May 24th, with the first-ever cargo of frozen meat, comprising 4,311 carcasses Mutton, 598 carcasses Lamb, 22 carcasses Pork, 2,226 Sheep Tongues.



WELLINGTON STAR

Today, the Blue Star Line's Motor Vessel "Wellington Star" of 11,994 tons is typical of the modern ships in the New Zealand trade. She is ten times as large as the "Dunedin". She carries 21 times as much Mutton and Lamb (108,823 carcasses) as well as 7,294 quarters of Chilled Beef, 10,029 packages of frozen Beef, Pork and Sundries, 60,652 cartons of Butter and 60,520 cases of Apples. She can make the voyage Auckland-Dunkirk in 31 days—less than one-third of the time taken by the "Dunedin".

Thus, over the years, have the ships played their part in New Zealand's continuous development. They have more than kept in step with the achievements of producers, for ship-owners must look far ahead. The ship that is built today will still be in service 20 years hence and must be able to handle the trade of the future, as well as that of today. As the Lines join in celebrating the 75th Anniversary of the dispatch of the first shipment of frozen meat, they look forward with confidence to the developments which have yet to come.

Issued in the interests of mutual understanding by

NEW ZEALAND OVERSEAS SHIPPING LINES

SHAW SAVILL & ALBION CO. LTD • THE NEW ZEALAND SHIPPING CO. LTD • PORT LINE LIMITED • BLUE STAR LINE LIMITED