

# IYA AUCKLAND

760 kc. 395 m.  
9.4 a.m. Saturday Morning Concert  
10.10 Devotional Service: Rev. S. Marlow (Baptist)  
10.30 Cricket: Report on State of Wicket at Eden Park  
Light Pianists and Vocalists  
11.0 Cricket: Australia v. Auckland, a commentary from Eden Park  
5.0 p.m. Teatime Entertainers  
7.30 THEATRE OF MUSIC  
(For details see 2YA)  
8.45 A Word from Children  
(For details see 2YA)  
9.15 Lookout, by L. F. Rudd  
9.30 The Goon Show (BBC)  
10.0 Make Believe Ballroom Time  
11.20 Close down

# IYC AUCKLAND

880 kc. 341 m.  
10.30 a.m. Sweetwood Serenaders  
10.45 Robert Farnon Orchestra  
11.0 Lenny Ross  
11.15 Ralph Sharon (piano)  
11.30 The Pinetoppers  
11.45 Tango with Sesta  
12.0 Lunch Music  
2.0 p.m. Saturday Matinee  
2.30 Music from France  
Overture: La Princesse Jaune  
Saint-Saens  
Songs by Faure  
Rhapsodie Espagnole Ravel  
3.0 Variety  
4.30 Light Concert  
5.15 Children's Session  
6.0 Dinner Music  
7.0 The Quintet Chigiano  
7.30 We Write Novels: V. S. Pritchett discusses his work with the critic Walter Allen (BBC)  
7.45 Dinu Lipatti (piano)  
8.3 Partita No. 1 in B Flat Bach  
8.3 The London Philharmonic Orchestra conducted by Sir Adrian Boult  
A Pastoral Symphony  
Vaughan Williams  
8.40 Janos Starker (cello) and Abba Bogin (piano)  
Sonata No. 2 in F, Op. 99 Brahms  
9.5 Kathleen Ferrier (contralto) with John Newmark (piano)  
Song Cycle: Woman's Life and Love, Op. 42 Brahms  
9.30 Music from Overseas  
(For details see 2YC)  
10.30 Jascha Heifetz (violin) with the RCA Victor Orchestra conducted by William Steinberg  
Scottish Fantasy, Op. 46 Bruch  
11.0 Close down

# IYD AUCKLAND

1250 kc. 240 m.  
11.0 a.m. In Holiday Mood  
11.30 Lawrence Welk's Orchestra  
12.0 Melody Menu  
1.30 p.m. Saturday Matinee  
3.0 Concert Hour  
4.0 Jaye P. Morgan (vocal)  
4.20 Art Warner (piano)  
1.40 For the Children  
5.0 Sam Price's Kay-Cee Stompers  
5.20 The Voices of Walter Schumann and Bruce Turner (saxophone)  
5.40 Folk Songs by Burl Ives  
6.0 Mantovani's Orchestra  
6.30 Rockin' and Rollin' with Fats Domino  
7.0 Bart Stokes and his Orchestra with vocalist Esme Stephens (from the Radio Theatre)  
7.30 Spinning the Tops  
8.0 Party Warners  
8.30 Radio Cabaret  
10.0 District Weather Forecast  
Close down

# IXN WHANGAREI

970 kc. 309 m.  
6.0 a.m. Breakfast Session  
8.0 Junior Request Session  
8.30 Sports Cancellations  
9.0 Mainly for Maungaturoto  
9.15 Winifred Atwell Entertains  
9.30 Popular Parade  
10.0 Strictly Instrumental  
10.15 Songtime with Bing Crosby  
10.30 Occupational Hazards  
10.45 The Coronets  
11.0 Close down  
5.45 p.m. For Younger Northland: Saga of Davy Crockett  
6.45 Cowboy Corner  
7.0 To Marry for Love  
7.15 Spotlight on Sport (Woodrow Wilson)  
7.30 It's In the Bag  
8.0 Sports Supplement  
8.5 Listeners' Requests  
10.0 Artie Shaw's Orchestra  
10.12 Rock and Roll  
10.30 Close down

# Saturday, March 16

# IYZ ROTORUA

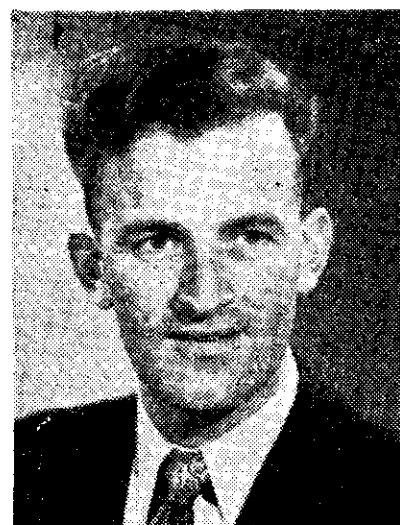
800 kc. 375 m.  
9.4 a.m. Frank Chacksfield's Orchestra  
9.30 The Goon Show (BBC)  
10.0 Robert Merrill and Rise Stevens  
10.30 Gardening Session (A. M. Linton)  
10.45 Tops in Pops  
11.30 Celebrated Conductors and Their Orchestras  
12.0 Lunch Music  
2.0 p.m. Popular Music Makers  
2.15 Sports Summary  
3.0 Mid Afternoon Melodies  
3.30 Hill-Billy Favourites  
4.0 Down Melody Lane  
4.15 Sports Summary  
5.0 For Our Younger Listeners: An Animal Alphabet; Noah's Ark; Nursery Rhymes; The Three Bears; Junior Naturalist  
5.30 Juke Box Favourites  
6.0 Dinner Music  
7.30 Four Generations  
8.0 Songs of the Countryside (BBC)  
9.30 The Goon Show (BBC)  
9.15 Lookout, by L. F. Rudd  
Songs of the Not So Long Ago  
10.0 Strict Tempo Dance Music  
10.30 Close down

# 2YA WELLINGTON

570 kc. 526 m.  
5.0 a.m. Breakfast Session  
7.18 Sports Cancellations and Announcements  
8.10 Sports Cancellations and Announcements  
9.4 Band Music  
9.30 Sports Cancellations and Announcements  
Morning Star  
9.40 Light and Bright  
10.10 Devotional Service  
10.30 Business Women's Session  
11.0 Sports Cancellations and Announcements  
Variety  
11.30 Racing: Commentaries from the Wellington Racing Club's Meeting at Trentham throughout the day  
12.0 Sports Cancellations and Announcements  
Lunch Music  
2.0 p.m. Music by Chopin  
2.30 Afternoon Matinee  
3.15 Richelieu, Cardinal or King? (NZBS)  
4.0 Paris Star Time  
4.40 The Golden Colt  
5.15 Children's Session: Lyrics with Louis; Children's Quiz  
6.0 Tea Dance  
7.30 THEATRE OF MUSIC: Les Cloches de Corneville, selections from the Robert Planquette Comic Opera, sung in French by members of the Paris Opera and L'Opera Comique, with orchestra and chorus conducted by Pierre Dervaux (All YAs, 4YZ)  
8.45 A Word from Children: A series of unrehearsed interviews with children in the U.S.A., the United Kingdom and Australia, by Keith Smith (ABC) (Last broadcast—All YAs, and 4YZ)  
9.15 Lookout, by L. F. Rudd  
9.30 The Goon Show (BBC)  
10.0 Highlights of Sport: A tour of the Sports Fields by Winston McCarthy (NZBS)  
10.15 District Sports Results  
10.20 Jim Golding and his Band, playing from the Majestic Cabaret  
10.50 Popular Instrumentalists  
11.20 Close down

# 2YC WELLINGTON

660 kc. 455 m.  
5.0 p.m. Early Evening Concert  
6.0 Dinner Music  
7.0 Commonwealth Feature Programme: Report on Kenya, by Philip Woodruff. (BBC)  
8.0 The Bavarian Radio Symphony Orchestra, conducted by Eugen Jochum  
Symphony No. 9 in D Minor Bruckner  
8.55 Vivien Dixon (violin) and Gwyneth Brown (harpichord)  
Sonata in D Tartini  
9.15 John McDonald (tenor) and Dorothea Franchi (harp)  
Songs by Elizabethan Composers (NZBS)



JOHN McDONALD (tenor), who, with Dorothea Franchi (harp), sings songs by Elizabethan composers at 9.15 tonight from 2YC

9.30 Music from Overseas  
The Louisville Symphony Orchestra  
Toccata Gloriosa Gardiner Read  
Symphony No. 41 Henry Cowell  
Elizabeth Brasseur Chorus with Soloists and Orchestra under the direction of Gustav Cloze  
Sacris Solemnis Michel de Lalonde  
(Recordings by courtesy of the American Embassy and the French Radio—All YAs)  
10.30 Arthur Rubinstein (piano) and Members of The Paganini Quartet  
Quartet No. 1 in C Minor, Op. 15 Faure  
11.0 Close down

# 2YD WELLINGTON

1130 kc. 265 m.  
7.0 p.m. Listeners' Requests  
10.0 Wellington District Weather Forecast  
Close down

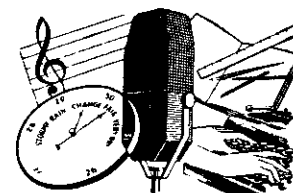
# 2XG GISBORNE

1010 kc. 297 m.  
6.0 a.m. Breakfast Session  
7.45 Sports and Picnic Cancellations  
9.0 Sporting Summary  
9.15 Motoring with Robbie  
9.30 Occupational Hazards  
9.45 Pick of the Pops  
10.0 Timely Gardening Hint  
10.3 Variety Time  
10.30 Frankie Laine (vocal)  
10.45 Music for Moderns  
11.0 Close down  
5.45 p.m. Hello, Children: Featuring the Little King Stories  
6.0 Something Old, Something New  
6.45 Rod Craig  
7.0 Tapestry of Life  
7.15 Sports Results  
7.30 Question Mark  
7.45 Today's Band: Stan Kenton's  
8.3 Listeners' Requests  
9.30 Journey Into Space—15 (BBC)  
10.0 Let's Have a Dance  
10.30 Close down

# 2YZ NAPIER

860 kc. 349 m.  
9.4 a.m. Morning Melodies  
9.30 The Golden Colt  
10.0 Master Music  
10.30 Will These Be Hits?  
10.45 Racing: Commentaries throughout from the Napier Park Meeting  
Variety  
2.0 p.m. Racing Summary  
Afternoon Programme  
4.30 Racing Summary  
5.15 Children's Session (Aunt Helen): Jamaican Folk Tales  
5.45 London Studio Melodies (BBC)  
6.15 Racing Summary  
7.30 Cranford—4 (BBC)  
8.0 From Stage and Screen  
Now It Can Be Told  
9.15 Lookout, by L. F. Rudd  
9.30 Radio Roadhouse (NZBS)  
10.0 On the Sweeter Side  
10.30 Close down

# NZBS



# SERVICE SESSIONS

## Dominion Weather Forecasts

YA and YZ Stations: 7.15, 9.0 a.m.; 12.33 (IYC link, not 1YA), 6.23, 9.0 p.m.  
X Stations: 9.0 p.m.

## YA and YZ Stations

6.0 a.m. London News, Breakfast Session (YAs only)  
7.0, 8.0 London News, Breakfast Session  
7.58 Local Weather Forecasts  
6.30 p.m. London News  
6.40 BBC Radio Newsreel  
6.50 Primary Produce Price Report  
7.0 National Sports Summary  
9.3 Overseas and N.Z. News  
9.15 Lookout, a N.Z. Commentary on International News, by L. F. Rudd  
11.0 London News (YAs, 4YZ)

# 2XP NEW PLYMOUTH

1370 kc. 219 m.  
6.0 a.m. Breakfast Session  
7.30 District Weather Forecast  
9.0 Gardening Session (Bill Wilson)  
9.15 Concert Platform  
9.30 In Western Style  
9.45 Lawrence Welk and his Orchestra  
10.0 Saturday Celebrities  
10.30 Piano Partners: Orton and Rarig  
10.45 Rhythm and Rhyme  
11.0 Close down  
5.45 p.m. Children's Corner: The Saga of Davy Crockett  
6.0 Music Makers  
6.30 Taranaki Hit Parade  
7.0 In Strict Tempo  
7.15 Sports Results (Mark Comber)  
Show Time  
7.45 Songs from the Four Knights  
8.1 The Orchestra Entertains  
8.15 The Guy Lombardo Show  
8.45 Howard Keel  
9.3 Play: Pacific Gold, by C. Gordon Glover (NZBS)  
10.0 Let's Dance  
10.30 Close down

# 2XA WANGANUI

1200 kc. 250 m.  
6.0 a.m. Breakfast Session  
8.0 Morning Requests  
9.0 Down to Earth with Curly  
9.15 Family Musicians  
9.30 Voices in Chorus  
9.45 Instrumental Parade  
10.0 Picture Posers  
10.15 Morning Variety  
10.30 Occupational Hazards  
10.45 Be Happy  
11.0 Close down  
5.45 p.m. The Junior Session: The Saga of Davy Crockett  
6.0 The Adventures of Rocky Starr: Destination Venus  
6.25 Weather Report and Town Topics  
6.40 Songtime: Vaughn Monroe  
7.0 Famous Firsts  
7.15 Sporting Review (Norm. Nielsen)  
7.30 Capering Keys  
7.45 Popular Vocalists  
8.0 Life with the Lyons (BBC)  
8.30 Old Time Dance Music  
9.4 Marches from France, Spain and Italy  
9.15 Play: Poet and Pheasant, by Wilks Hall (NZBS)  
10.1 Ella Fitzgerald, Bing Crosby, Frances Langford, The Mills Brothers, Connie Boswell and the Inkspots  
10.30 Close down