

DX NOTES

THESE notes bring news about stations in other countries, programme information and details of special broadcasts for New Zealand listeners. They are supplied by the New Zealand Radio DX League, 212 Earn Street, Invercargill, from which further information can be obtained.

AUSTRALIA.—Two new stations have taken the air in our sister Dominion in the past few weeks. January 19 saw the opening of 2VM Moree, N.S.W., operating on 1530 kcs, with a commercial programme. Closing down time is midnight. A new station of the Australian Broadcasting Commission in South Australia, 5PA at Penela, South Australia, relaying the programmes from Adelaide, is now operating on 1160 kcs, the same channel as used by 3XC Timaru.

NORTH AMERICA.—Signals on the broadcast band, at dusk, are being received at good strength in favoured localities, when these stations can be heard before the Australian signals become evident. The best received signals are KPOA (630), KFI (640), KNBC (680), KOMO (1000), KEX (1190), CFRN (1260), KOIL (1290), KFAC (1330), WADC (1350), KHON (1380), KGER (1390), KSTN (1420), KENO (1460), WSAN (1470), WLAC (1510), KGON (1520), KBFK (1530), KXEL (1540), XEBG (1550), XERF (1570), WAKR (1590). These stations are generally good from 7.0 p.m. to 9.0 p.m.

SHORTWAVE

ECUADOR.—The well known missionary broadcaster HCJB in Quito has been full of appreciation for the many letters received from New Zealand listeners during 1956. In the past year over 1500 letters were received from Australia and New Zealand compared with 325 in 1953. A session of programme notes is broadcast at 7.15 p.m. each Saturday, when the English Programme Director, Miss Nancy Willmer,

MRS. A. CONFESSES

THE Confessions of a Postwoman is a series of five talks written by Mrs. A. of 'Poplar Hill.' They are being heard from 1YA now and will follow later on the other YA stations.

Some postwomen deliver mail as quickly as possible and then go home, but Mrs. A. thought that would be a very dull routine. On her round she met men and women of all temperaments and all problems, and they responded to her company. Her own occupational hazards, "the Bulge," the unfriendly dogs, and the Christmas rush, she dealt with cheerfully. But in the poorer districts where she worked she found need for sympathy with the plight of some neglected and handicapped children, and the loneliness of the old, from whom age and misery had taken even the power to laugh at their troubles.

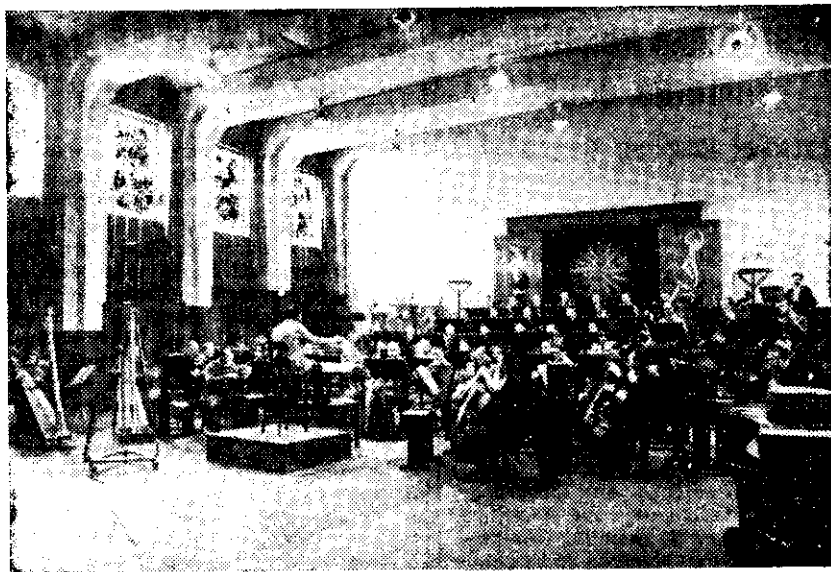
The postwoman was the one regular visitor in their lives, and Mrs. A. was always ready to stop and talk to them and any others. Fortunately, not all problems were so unhappy. In one home there was to be a wedding and there was no one to play the piano. Mrs. A. was not very sure of her ability as a pianist, but she finally offered to play. But when she was expected to play from memory, she was forced to let the "Wedding March" trail off into "Frog Puddles." However, the thanks next day sounded quite sincere. This incident, and many others, Mrs. A. recounts with humour and tolerance.

besides giving advanced schedule information answers letters from listeners. The station operates on 15115 kc., 11915, and 9745 kc. in the 19, 25 and 31 metre bands. This special service to New Zealand is called the Southern Cross Salute and is broadcast 7.0-10.0 p.m. In the past few weeks one of the new 50,000-watt transmitters has been used on the 31 metre band.

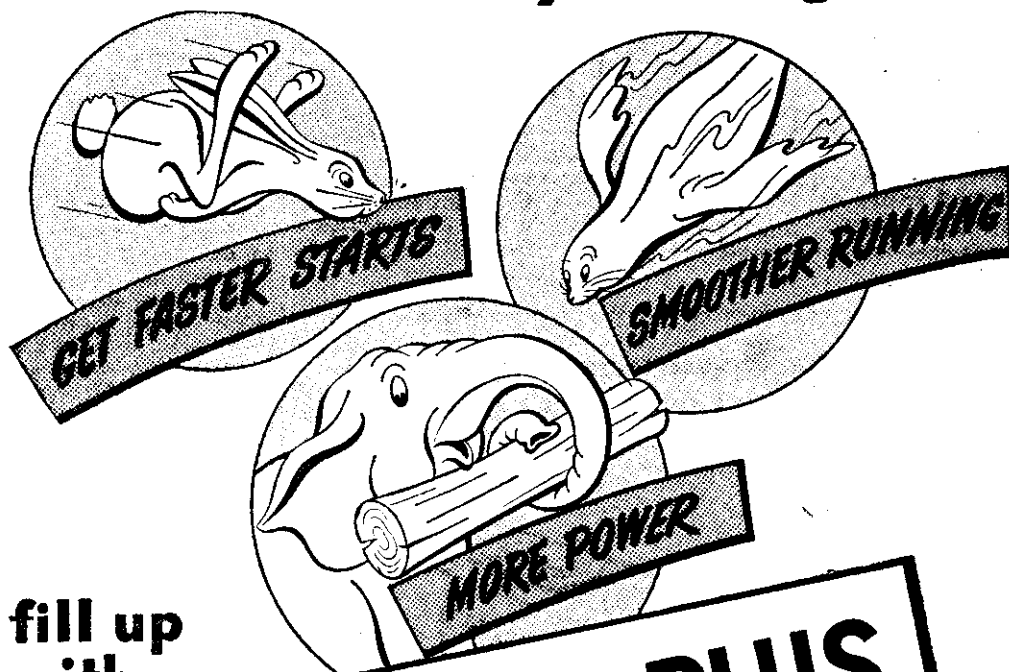
EGYPT.—Cairo Radio has returned to the air and has a short news broadcast in English at 8.30 a.m. on 9780 kc. The transmission starts at 7.45 a.m. in French and after 8 a.m. the language used is both French and English.

HUNGARY.—The broadcast from Budapest in the Foreign Service has been rescheduled with English news at 8.0 and 10.0 a.m. each day. The 30-minute broadcast contains news and commentary and often messages from Hungarian people to friends abroad.

Right: One of the large studios of Radio Budapest



Get more
SUMMER POWER
from your engine!



fill up
with —

**CALTEX IC-PLUS
PETROL**



At Friendly Caltex Dealers Everywhere