

1ZB AUCKLAND
1070 kc. 280 m.

- 6.0 a.m. Breakfast Session
9.0 Morning Session (Aunt Daisy)
9.30 Joe Loss
9.45 We Travel the Friendly Road with Friend Harris
10.0 Doctor Paul
10.15 Rowan Lodge
10.30 The Imprisoned Heart
10.45 Portia Faces Life
11.0 Remember These?
11.30 Shopping Reporter (Jane)
12.0 Midday Melody Menu
1.30 p.m. Aunt Jenny's Real Life Stories
1.45 A Kreisler Souvenir
2.0 Concert Hall
2.30 Women's Hour (Marina): Angel's Flight
3.30 Afternoon Tea Variety
4.0 A Film Star Sings: Bing Crosby
4.15 Richard Tauber
4.30 Hawaii Calls
4.45 Ron Goodwin's Orchestra
5.0 Voices in Harmony
5.15 Anne Shelton
5.30 Happiness Club

EVENING PROGRAMME

- 6.0 Current Releases
6.15 Les Baxter's Chorus and Orchestra
6.30 Destination Venus
6.45 Daily Diary
7.0 My Friend Irma
7.30 Passing Parade
7.45 Prophecy
8.0 Lever Hit Parade
8.30 Tudor Queen
8.45 The Devil and the Lady
9.0 The Joker
9.30 From Stage and Screen
10.0 Memories in Melody (Rod Talbot)
10.30 Paradise of Cheats
10.45 Rhythm on Reeds
11.0 Radio Nightclub
12.0 Close down

2ZB WELLINGTON
980 kc. 306 m.

- 6.0 a.m. Breakfast session
6.15 Railway Notices
9.0 Morning session (Aunt Daisy)
9.30 Morning Melodies
10.0 Doctor Paul
10.15 Real Life Stories
10.30 The Imprisoned Heart
10.45 Portia Faces Life
11.0 Mid-Morning Choice
11.30 Shopping Reporter (Doreen)
12.0 Bright and Breezy
1.30 p.m. Aunt Jenny's Real Life Stories
2.0 Orchestral Parade
2.15 Beniamino Gigli
2.30 Women's Hour (Mina), Film and Theatre News; Angel's Flight
3.30 Afternoon Tea Tunes
3.45 Eddie Fisher
4.0 Accordion Time
4.15 Continental Flavour
4.30 N.Z. Artists
4.45 Hawaiian Harmonies
5.0 Ray Anthony's Orchestra
5.15 Alma Cogan
5.30 Rod Craig in Conspiracy
5.45 N.Z. Artists

EVENING PROGRAMME

- 6.0 Dinner Music
6.30 Hugo Winterhalter Orchestra
6.45 Gisele McKenzie Sings
7.0 My Friend Irma
7.30 Passing Parade
7.45 Eddy Howard's Orchestra
8.0 Lever Hit Parade
8.30 Tudor Queen
9.45 Famous Decisions
9.0 The Joker
9.30 Ray Martin's Orchestra
9.45 Concert Artists
10.0 In Reverent Mood
10.15 On the Sweeter Side
10.30 Paradise of Cheats
10.45 Al Martino
11.0 For the Hutt Valley
12.0 Close down

3ZB CHRISTCHURCH
1100 kc. 273 m.

- 6.0 a.m. Breakfast Session
8.0 Breakfast Club (Happy Hill)
8.15 Hear That Bell, Junior
9.0 Morning Session (Aunt Daisy)
9.30 Bright and Breezy
10.0 Doctor Paul



JUSSI BJORLING (tenor) sings from 3ZB today at 3.45 p.m.

- 10.15 Girl on the Cover
10.30 Imprisoned Heart
10.45 Portia Faces Life
11.0 Morning Melodies
11.30 Shopping Reporter (Elizabeth Anne)
12.0 Lunch Music
1.30 p.m. Aunt Jenny's Real Life Stories
2.0 Light Concert
2.30 Women's Hour (Joan Gracie): Angel's Flight
3.30 Orchestral Classics
3.45 Jussi Bjorling
4.0 School Choirs
4.15 Robert Farnon
4.30 Little Swiss Songs
4.45 Something Cool
5.0 Variety
5.30 Don Cornell
5.45 Sung for Children

EVENING PROGRAMME

- 6.0 Charles Williams Plays Themes from Films
6.15 Top Pops
6.30 Jimmy Young
6.45 All the Things You Are
7.0 My Friend Irma
7.30 John Nesbitt's Passing Parade
7.45 Milestones
8.0 Lever Hit Parade
8.30 Tudor Queen
8.45 Emergency
9.0 The Joker
9.30 Supper Music
10.0 Oscar Peterson
10.15 Nat King Cole
10.30 Black Lightning
10.45 Sydenham is on the Air
12.0 Close down

4ZB DUNEDIN
1040 kc. 288 m.

- 6.0 a.m. Breakfast Session
7.30 Weather Forecast
7.35 Morning Star
8.10 School Bell
9.0 Morning Session (Aunt Daisy)
9.30 Musical Album
10.0 Doctor Paul
10.15 The Dark Abyss
10.30 The Imprisoned Heart
10.45 Portia Faces Life
11.0 Morning Variety
11.30 Shopping Reporter
12.0 Lunch Music
1.30 p.m. Aunt Jenny's Real Life Stories
2.0 Light Variety
2.30 Women's Hour (Prudence Gregory): Postmark U.K., Arthur Bush Visits the Clyde (BBC); Fashion Report; Angel's Flight
3.30 Afternoon Musicale
4.0 Accordians
4.15 Stanley Black and his Orchestra
4.30 Deanna Durbin
4.45 Ben Light (piano)
5.0 Popular Parade
5.45 N.Z. Artists

EVENING PROGRAMME

- 6.0 Accent on Melody
6.15 Hawaiian Hits

- 6.30 Famous Entertainers
6.45 Harmony Lane
7.0 My Friend Irma
7.30 Passing Parade
7.45 The Golden Fool
8.0 Lever Hit Parade
8.30 Tudor Queen
8.45 The Cat Scratches
9.0 The Joker
9.30 Radio Variety Corner
10.0 Mystery Stable
10.15 Dance Music
10.30 Black Lightning
10.45 Dance Music
11.0 Nocturne for Night Owls
12.0 Close down

2ZA PALMERSTON Nth.
940 kc. 319 m.

- 7.0 a.m. Breakfast Session
9.0 Good Morning Requests
9.30 Music from the Films
10.0 Philip Marlowe Investigates
10.15 Strange Honeymoon
10.30 Out of the Shadows
10.45 The Girl on the Cover
11.0 Shopping Reporter (Pamela Rutland)
11.30 Stars of Song: Mario Lanza (tenor)
11.45 Hawaiian Cameo: The Hawaii Calls Orchestra
12.0 Lunch Music
2.0 p.m. Musical Comedy Stage
2.30 Women's Hour (Kay): A Woman Scored; Fashion News
3.30 Light Concert
4.0 Jane Froman and Jan Mazurus (vocalists)
4.10 Les Baxter's Orchestra
4.40 Songs from Scotland

- 6.0 Light Instrumentalists
6.30 Air Adventures of Biggles: Secret Weapon
5.45 Western Style: Jimmy Wakely
EVENING PROGRAMME
6.0 Tango Time
6.15 Jesse Crawford (organ)
6.30 Stars of European Variety
7.0 Rod Craig
7.15 The Double Life of Michael Chance
7.30 Undercover Carson
7.45 Reserved
8.0 The Good Companions
8.30 Irish Songs: Richard Hayward (Traditional Ballad Singer)
8.45 Office Wife
9.0 Bold Venture
9.30 Melody Time: Margaret Whiting (vocal), Herbert Seiter (piano), and Charles Sweet and his Orchestra
10.0 The Accused
10.15 Rhythm Rendezvous: The Orchestra of Johnny Long
10.30 Close down

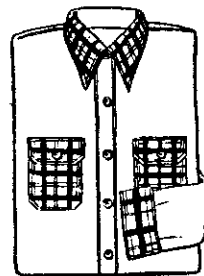
Jimmy Young joined the R.A.F. in 1939 to train as a pilot, but after an illness he became a physical training instructor. After the war he was an accountant, and played and sang at a swimming club to earn more money. Here he was heard by a BBC producer; two weeks later he was on the air. Today at 6.30 3ZB features some of his popular recordings.

At 8.30 p.m. 2ZA will feature vocalist and folk song collector Richard Hayward in a selection of Irish traditional songs.

3 HB Winners for Winter

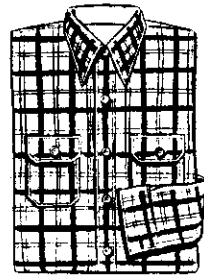
Colourful all wool sports shirts

These H.B. Topper Shirts are fashioned from 100% pure Wool Shirting, the products of Mosgiel and Bruce Woolen Mills



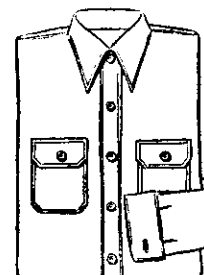
"TOPPER" ALL - WOOL SHIRTS. Plain colour bodies and sleeves, with contrasting check or tartan on collar, pockets, flaps, and cuffs. A range of nine colours. Same price as last year—

45/-



"TOPPER" ALL - WOOL SHIRTS. In gay checks and tartans by "Bruce." Seven genuine clan tartans and five colourful 3in check patterns available. Same price as last year—

47/6



"TOPPER" ALL - WOOL SHIRTS. In plain colours—three shades of Blue, two Browns, Fawn, Silver, Bottle, or Maroon to choose from. Mosgiel material. Same price as last year—

42/6

Hallensteins

31 Men's and Boys' Wear Stores Throughout N.Z.

H.B.5/55