

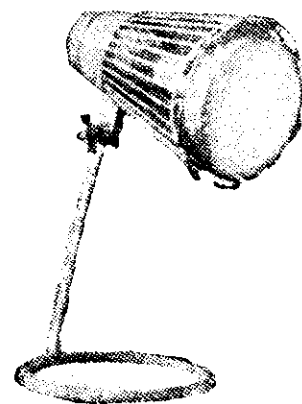
DO YOUR shopping BY MAIL
WRITE NOW TO THE LAMPHOUSE 11 MANNERS ST. WELLINGTON. C.I.
N.Z.'s LEADING RADIO AND ELECTRICAL HOUSE

"OUR GUARANTEE"

"Any goods that prove in any way unsuitable may be returned within 7 days from receipt and your money will be REFUNDED IN FULL."

BATHE IN TROPICAL SUNSHINE!!
 UNDER THE NEW, LATEST

"PHILIPS SUNLAMP"



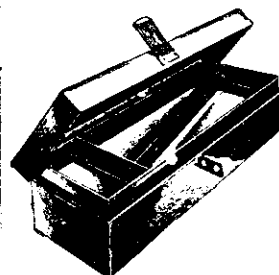
Manufactured by PHILIPS (Holland) and incorporating the **ULTRA-VIOLET LAMP** with the **MERCURY QUARTZ TUBE**, BENEFICIAL AND REFRESHING SUN RAYS FROM YOUR OWN HOT-POINT... SUMMER OR WINTER. Step on to the beach this summer with that healthy bronzed look. No trouble or inconvenience—takes only a few minutes daily.

FULL INSTRUCTIONS WITH EACH LAMP
 Cat. No. LF 104

Post Free. **£9/16/-**

Supplied by the Electric Lamphouse Ltd.

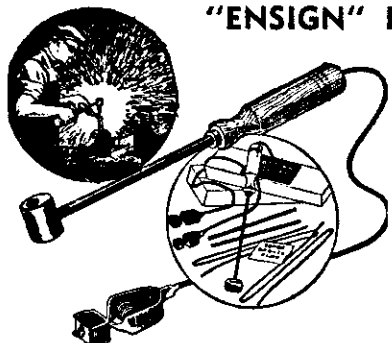
ALL-STEEL TOOL BOXES
 FOR RADIOMEN, ELECTRICIANS, HANDY-MEN, ETC.



Sprayed with green lacquer and complete with hasp and staple. Dimensions: Length 19in., width 6in., depth 6 1/2in. Tools fit in the bottom, and ends and ends in the top partitioned tray.
 Cat. No. LU141

47/6
 Post Free.

"ENSIGN" BATTERY WELDING KIT
 An Essential in Any Workshop



YOU WILL BE AMAZED AT JUST WHAT IT WILL DO

It welds, brazes and solders. Operates from an ordinary 6 to 12-volt Car or Storage Battery, and is ideal for mending all light metal work, such as Farm Equipment, Car Mudguards, Radiators, Cans, Buckets, etc. Supplied complete with all accessories and instructions, including carbon, brass and steel, Electrodes, and Clips. Spares are always available. Detailed instructions with each outfit.

Cat. No. LE8 **39/6**
 Post Free.

Five Good Reasons Why You Want An "AERITROL"
 Marvellously Improved Reception (at our risk)

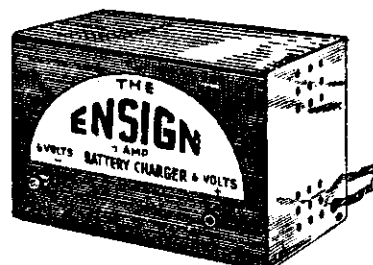


- (1) It will separate interfering Stations.
- (2) It will reduce noise level and interference.
- (3) It will increase volume on weak stations.
- (4) It will eliminate outdoor and indoor Aerials, acting as a perfect Aerial Eliminator.
- (5) It controls the volume from powerful local stations.

Installed in a few minutes without tools. Try it at our risk. Send for an **AERITROL** today. Try it in your own home for seven days. If at the end of that time you are not thoroughly satisfied with it, return it and we will refund your money in full. Full instructions with each unit.

Cat. No. LA1 **PRICED AT ONLY 39/6**
 Post Free

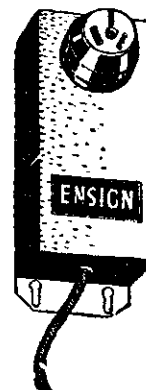
"ENSIGN" BATTERY TRICKLE CHARGER



You never need to be stuck with a run-down Car or Radio Battery. These units will charge all types of 6-volt Batteries. Operate from 230-volt A.C. current. Connect direct to Battery. Uses 1/2 amp. Dry Metal Type Rectifier. Size of Sprayed Metal Case: Length 8in., height 5 1/2in., depth 4in.
 Cat. No. LA220 **£4/15/-**
 Post Free.

STOP THAT NOISE!!

WITH AN "ENSIGN" LINE FILTER



Stops man-made interference being picked up by your Radio. Eliminates noises from power lines, motors, machines, etc. No fitting required, simply plugs into your power point. Nothing is more annoying than to have your favourite radio feature spoilt by interference. Do something about it now! Sold under our **7 Days' Money-Back Guarantee**.

Cat. No. LA4 **23/6**
 Postage 1/-.

THE NEW "PIFCO" TEAMAKER

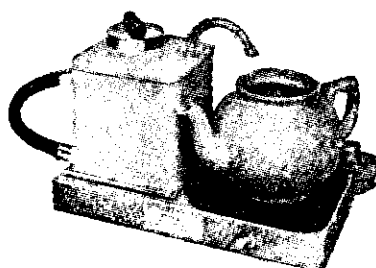
Now this is really taking things easy. A flick of the switch and complete relaxation while the water boils, kettle automatically switches off, water pours into the teapot, and a gentle buzzer announces that the tea is ready.

The Teamaker comprises a 2-pint steel kettle, ivory enamel finish, with insulated handle and chrome plated bayonet fitting lid.

Mounted on an Ivory enamelled base 10 1/4in. x 5in., embodying a cork covered stand for a teapot. (Teapot not supplied.)

Plugs into your nearest hotpoint. Instructions supplied.

Cat. No. LE928 **£5/19/6**
 Post Free.

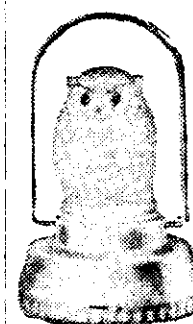


NIGHT LIGHTS
 600 HOURS FOR ONE PENNY!



Shaped to plug into a light socket. The small transformer reduces 230 volts to a 6-volt 3 amp. screw-in torch bulb. Just the thing for dark cupboard, child's room, or sick room. Size 4in. x 1 3/4in.
 Cat. No. LF 750 **9/6**
 Postage 5d.

"OWLITE" NIGHT LAMPS



A New Attractive Night Lamp. Ideal for kiddies' rooms. "Owlite" figure is moulded in translucent plastic. Carrying handle. Uses two torch batteries.

Also ideal for cupboards, pantries, etc., where it is impracticable to install lighting. Complete with batteries.

Cat. No. LT912A, **9/11**
 Postage Extra.

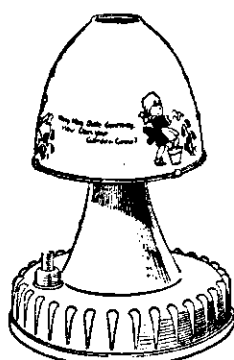
THROAT MICROPHONES



As used by the Armed Services. Simply fasten around the throat, or attach to instrument, as case may be, and with the aid of a special Matching Transformer allows you to broadcast through your own radio.

Ideal for playing stringed instruments through a radio.

Complete w/transformer LM180/X1316 and instructions **22/6**
 Postage 7d.

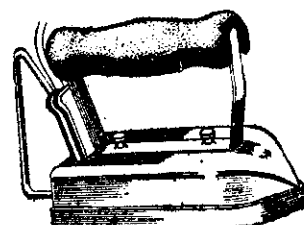


Children's BEDSIDE LAMP

LEAVE ON ALL NIGHT. 230-v./600 HOURS' BURNING FOR ONE PENNY! Beautifully made in pastel coloured plastics. With switch, cord, adapter and shade. Useful in sick room.

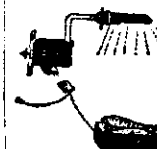
Wonderful Child's Present! Cat. No. LF 770, **24/6**
 Postage 9d.

LIGHTWEIGHT IRON



The "Pifco" Lightweight Iron is ideal as a Travelling Iron or Light-duty Iron. Weighs 2lb. Nickel-plated. Complete, ready to plug in to your nearest light socket. Size 5 1/4in. x 2 3/4in. x 4in.
 Cat. No. LE281 **23/6**
 Postage 1/9

SEWING MACHINE MOTORS



May be fitted by any amateur to almost every old or new model Sewing Machine. An enormous time saver—no treading necessary. Complete with variable speed foot control, needle light, etc.

SEWING A PLEASURE!
 Cat. No. LM 563 **£5/19/-**
 Post Free.