

# NEW ZEALAND LISTENER

Incorporating N.Z. RADIO RECORD

Every Friday

Price Fourpence

EDITORIAL AND BUSINESS OFFICES:  
115 Lambton Quay, Wellington, C.I.  
Box 2292, G.P.O.  
Telephone No. 70-999.  
Telegraphic Address: "Listener," Wellington

FEBRUARY 25, 1955

CONTENTS	Page
Editorial - - - -	4
Letters from Listeners - -	5
National Sunday Programme	6
In Hollywood - - - -	6-7
An English Primitive - -	7
The Hubert Church Papers -	8
Shepherd's Calendar - -	9
The Week's Music - - - -	10
Radio Review - - - -	10-11
Books - - - -	12-13-14
Memories of Old Britain -	14
"The Dream" and "The Body"	15
N.Z. Hit Parade - - - -	15
"The Listener" Crossword -	16
Pacific Women's Conference -	16
China Coast Crisis - - -	17
Films - - - -	18
The Ship That Died of Shame	19
The Orchestra - - - -	21
Among the Mutton Birds -	21
Ask Aunt Daisy - - - -	22-23
Open Microphone - - - -	24-25

## BROADCAST PROGRAMMES

Mon. to Sun., Feb. 28-Mar. 6 26-46

## SUBSCRIPTIONS

**OVERSEAS.**—Twelve months (including postage): Great Britain and British Countries, 21/-; Foreign Countries (including U.S.A.), 24/-.

**WITHIN N.Z.** (Special Rates)—If paid in advance at any Money Order Post Office: Twelve months, 20/-; six months, 10/-.

**RENEWALS.**—Two weeks' notice of renewal is required.

**CHANGE OF ADDRESS.**—Two weeks' notice required. Please give both the new and the old address.

## ADVERTISING RATES

Terms on application to the Advertising Manager, "New Zealand Listener," Box 2292, G.P.O., Wellington, N.Z.

### BUNION PAIN

**FASTEST RELIEF EVER!**

Use Dr. Scholl's Zino-pads, bunion size, and ease pressure on painful joint. Medicated daks quickly give soothing relief. Shoe pressure and friction immediately removed. 1/-, 2/- pkt. Chemists everywhere.

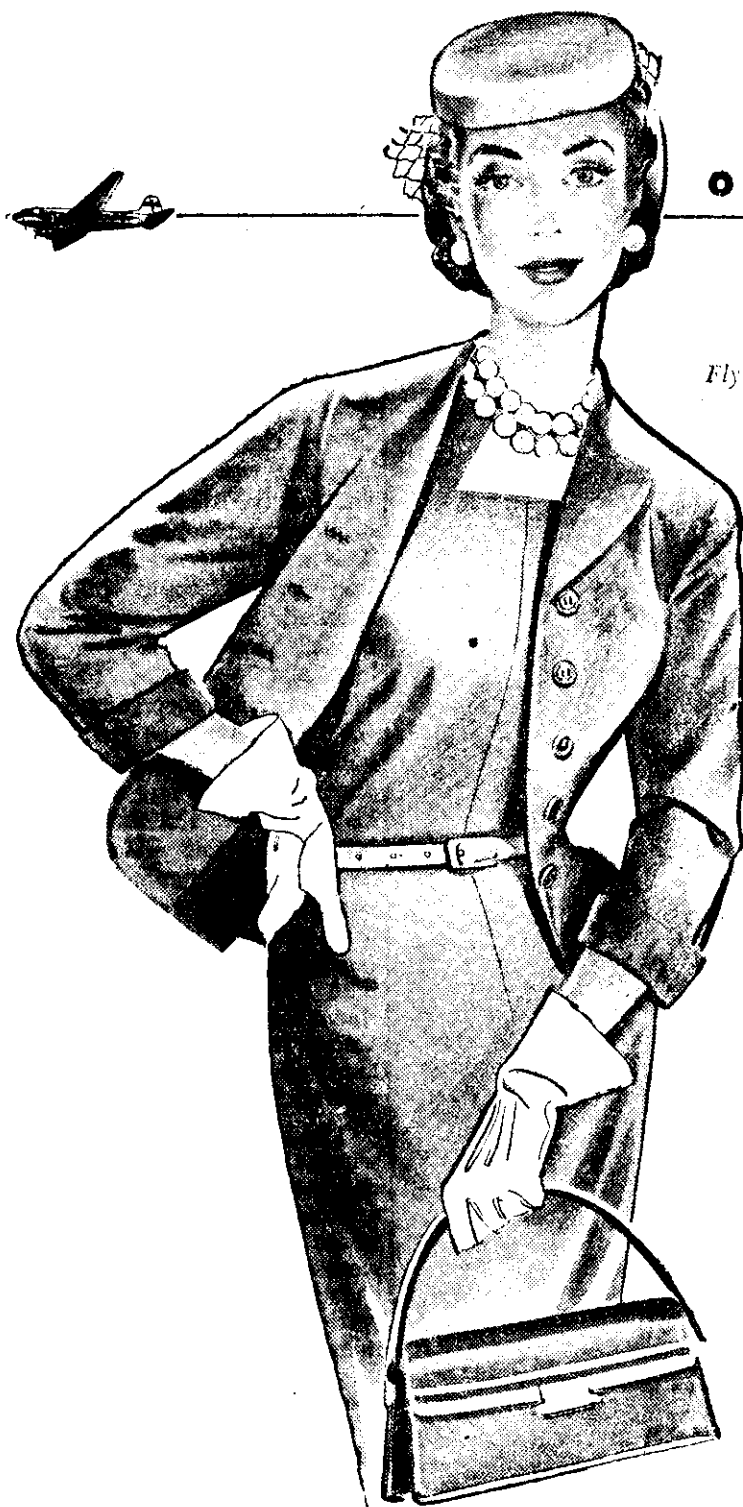
**1-ON! 2-GONE!**

### Dr. Scholl's Shops:

HAM. 30 Colwood St. L.R. HUTT 291 High St.  
HAST. 403 H'cough St. BLUN. 4 George St.  
NEW PLY. 52 Queen St. NELSON 247 Hardy St.  
WANE. 192 Vic. Ave. CHCH. 123 Cassel St.  
PALM. N. 136 B'way. TIM. CRT. George & Sophia  
WGTOR. 9 Willis St. DUNEDIN 20 Moray Place

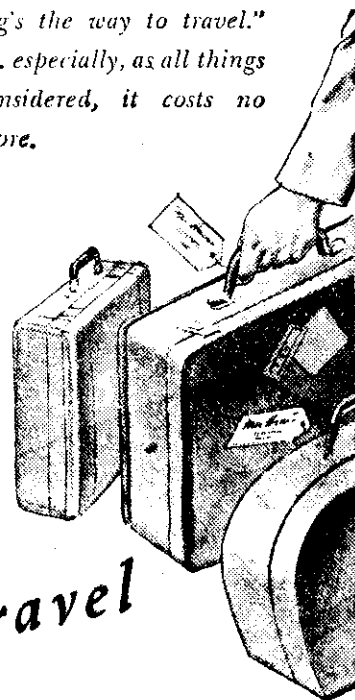
**Dr. Scholl's Zino-pads**

Scholl Mfg. Co. (N.Z.) Ltd., Willeston St., Wanganui



**Only your handbag  
to carry . . .**

Flying is travel with convenience added and irks removed . . . it's courteous (no queues, no crush, no struggling with luggage — N.A.C. look after it for you) . . . quick (3-mile-a-minute, you arrive fresh) . . . convenient (on most routes you have a choice of several departure times) . . . comfortable (you have a personal light, individual fresh air control, magazines supplied) . . . and most airports have pleasant cafeterias and helpful airport hostesses. No wonder business folk, families, holiday makers say, "flying's the way to travel." . . . especially, as all things considered, it costs no more.



**NAC**

*Flying's the way to travel*

NEW ZEALAND NATIONAL AIRWAYS CORPORATION

128.H.14