

The Gift that compliments the giver...



Anniversaries, presentations...

There's no finer gift for that "extra-special" occasion than a Roamer. Supremely accurate, superbly designed, with the lasting fidelity which only jewelled Swiss movements can give.

Ladies' and Men's styles from £7-15-0 to £15-15-0, including Waterproof, Shock-protected models. Automatic Self-winding and Ladies' 9-ct. Gold from £16 to £20.



FROM JEWELLERS EVERYWHERE

42.7.5

FARMERS' MODEL COMPRESSOR



80-100 lbs. pressure — 5½ cu. ft. per minute — 10-gallon air tank — automatic pressure control — rubber wheels. Guns, hose and accessories supplied. All spare parts available. We are spray-paint equipment experts. Six months' guarantee on our units.

Versatile Air Compressor

FOR FAST AND COMPLETE

**Spray Painting, Tyre Inflation
General Maintenance Work**

Portable, economical, Compressor Plant—has 101 uses around homes, workshop, small holdings. Saves money, time and labour. Now you can do your own decorating, spraying, inflating, etc.

The FARMERS' MODEL COMPRESSOR PLANT.

Send for details without obligation. WRITE NOW!

S. HINDIN AND SONS LTD.,
115 LICHFIELD STREET, CHRISTCHURCH. Phone 79-964.

H25

Open Microphone



A.P.S. photograph

"IT hasn't been very easy," Judith Clark told us when we interviewed her about her recent award of a Government bursary for two years' piano study in Britain. "Unfortunately, just about the only interest possible outside of music has been ballet." And we believed her. Miss Clark started learning the piano in her home town, Wellington, when she was about nine. Over the last ten years she has practised the piano, studied for her piano exams (she has her L.R.S.M.), taught the piano,

BURSARY WINNER

both privately and as an assistant music teacher at Scots College, and during the last two years has gone well on the way towards her Mus. Bach. degree at Victoria College. Judith Clark has applied to spend her two years overseas at the Royal Academy, London. When her bursary finishes, she will return to New Zealand and hopes then to continue teaching, broadcasting—listeners will remember her playing in a recent edition of Owen Jensen's *Music Magazine*—and generally fitting into the musical life of Wellington and the Dominion.

★
WHEN Bryan O'Brien visited the Fiji Islands towards the end of last year in the Royal New Zealand Navy

corvette Tui, he took his tape recorder with him. However, the sounds of ship-board and shore-leave did not entirely fill up the spools. He recorded enough of the beautiful singing of the Islands to make up five quarter-hour programmes, which he has called *Fiji, Land of Song*. In the first programme

listeners will visit the famous Ballentine Fijian Girls' School at Lami. In the next,

Fiji's picturesque Police Force Choir, massive, bare-foot giants in battledress jackets and white sulus, sing anthems and folk songs. The Methodist Church has always had a strong influence in the Islands, so Bryan O'Brien also went along to listen to their Jubilee Church Choir, whose voices combine in organ-like harmonies. The programme, "A Fijian Christmas," celebrates Christ's birth in songs and carols sung in the native tongue. Finally, Bryan O'Brien presents a selection of choral music in a variety of Fijian settings. *Fiji, Land of Song*, will be heard from all YA stations, beginning at 7.35 p.m. this Saturday, February 26. The four subsequent programmes will begin at 7.30 p.m. on Saturdays.

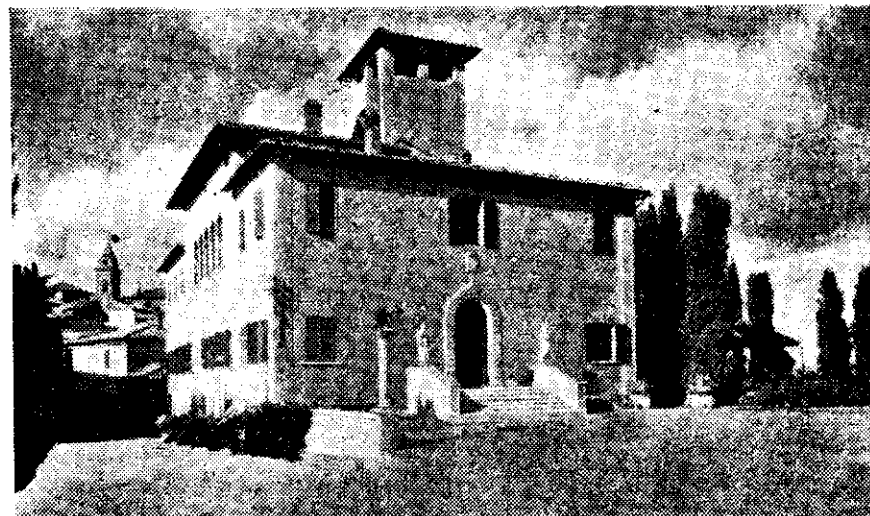


Spencer Digby

BRYAN O'BRIEN

★
AN Italian estate in Tuscany which contains 38 farms and where life moves on almost feudal lines, is described by Dr. Gerda Eichbaum-Bell, in a talk, "A Country House in Italy," to be heard from 2YA at 8.0 p.m. on Thursday, March 3. Dr. Eichbaum-Bell, who is librarian in the Education Department Library in Wellington, spent some days living on the estate during a recent visit to Italy. She says it was

a life completely different from that on IN TUSCANY New Zealand's big sheep stations—the villa, for instance, has 12 indoor servants, a "superabundance of domestic staff, which was rather overwhelming to a New Zealander." The staff work long and exacting hours, and there's



BETOLLE, Siena, the country home in Tuscany which Dr. Gerda Eichbaum-Bell describes in her broadcast

N.Z. LISTENER, FEBRUARY 25, 1955.