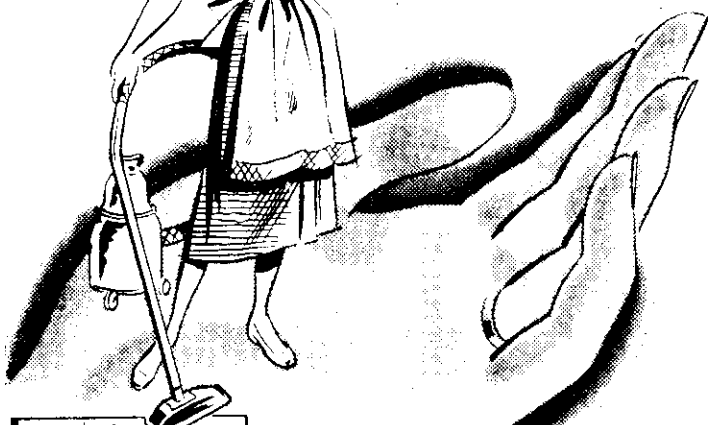


What! Me! A hard-worked housewife with soft comfortable hands?



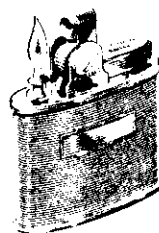
The simple perfect remedy is in your own hands



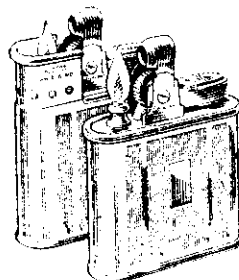
keep it handy where ever hands are washed

Sydal Pty. Ltd. 156 Willis Street, Wellington

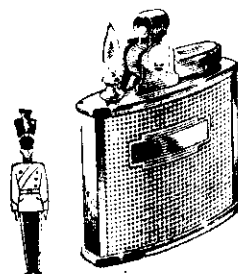
RONSON
WORLD'S GREATEST LIGHTER



Ronson Standard—Shown in satin chromium. Other finishes in engine-turned chromium or leather. From 50/- to 60/-.



Ronson Whirlwind—With telescopic windshield, lights and stays alight in any wind. From 57/6 to 70/-.

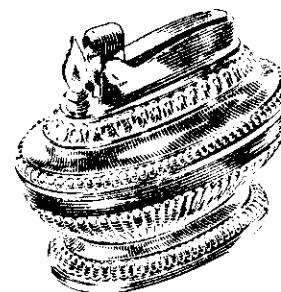


Ronson Cadet—A new, most economically priced Ronson, 34/6. Also available with new-style windshield, 37/6.



**So fashionable to give—
Such a pleasure to own!**

TODAY a Ronson lighter is one of life's most useful, socially acceptable and fashionable possessions. You have that superb feeling of lighting up with the best. You feel you belong. Today most successful people carry a Ronson as a matter of course.



Ronson Queen Anne Table Lighter. Beautifully designed and finished. A gift of lasting pleasure. Ronson Table Lighters — 102/6 to 117/6.

Wholesale only: Ponsford, Newman & Benson 1948 Limited, P.O. Box 2085, Wellington.

37.L.7

Win Friends, Popularity with Little Tricks of Everyday Talk

A well-known publisher reports there is a simple technique of everyday conversation which can pay you real dividends in both social and professional advancement and works like magic to give you added poise, self-confidence and greater popularity. The details of this method are described in a fascinating booklet, "Adventures in Conversation," sent free on request.

According to this publisher, many people do not realise how much they could influence others simply by what they say and how they say it. Whether in business, at social functions, or even

in casual conversations with new acquaintances, there are ways in which you can make a good impression every time you talk.

To acquaint more readers of this paper with the easy-to-follow rules for developing skill in everyday conversation, the publishers have printed full details of their interesting self-training method in a 24-page booklet, which will be sent free to anyone who requests it. Please send 6d in stamps to cover postage and despatch. The address is Conversation Studies, Dept. RL2, Totara Park, Kerikeri Central, North Auckland.

N.Z. LISTENER, JULY 2, 1954.