

Fifth Korea Concert Party

NEW ZEALAND'S fifth Korea Concert Party will leave on June 30 for Japan and Korea as part of the entertainment scheme arranged for the British Commonwealth Division, who are still on garrison duty in the recent war area. The leader of the party will be Ces Morris, of Auckland, a magician and card-trick expert, who was formerly a member of the Kiwi Concert Party. The other members are Pat McMinn, of Auckland, pops vocalist and comedienne; Jean Kirk-Burnnand, of Dunedin, solo pianist and accompanist; John Reidy, of Auckland, comedian; and Johnny Cooper, of Wellington, cowboy singer.

The artists in the party have been selected by the NZBS in conjunction with the Army Department, and their show, which is planned on the lines of a small revue, will be produced and rehearsed by the NZBS before departure. Rehearsals will begin at Narrow Neck Camp in Auckland one week before leaving. The party will spend a month in Korea and two weeks in Japan.

The Commonwealth entertainment scheme for Korea allows for a visit each month by a team from one of the Commonwealth countries. The New Zealanders first went there in August, 1952, and a new team has gone up regularly every six months since then. The concert party entertains all units of the Division, which includes British, Australians and Canadians, as well as New Zealand troops. Their past visits have been very popular with the Division, according to Ulric Williams, who led some of the previous parties and is in charge of the rehearsals of the present group.

Pat McMinn will sing the popular songs which always seem to get most applause in army shows. She is well known in Auckland as a radio and dance band singer, and has done outstanding work at Papakura Camp concerts in recent months, where she has developed a considerable talent as a comedienne. She was a member of the second Korea Concert Party in 1953.



CES MORRIS, formerly a member of the Kiwi Concert Party, who is to lead the Korea Concert Party which leaves New Zealand on June 30. Pat McMinn, at top of page, will be the "pops" vocalist and comedienne



★ **COAXING** nervous contestants into song is one of the most difficult jobs facing Jack Maybury (left), genial quizmaster of the six-weeks-old ZB shows "Number, Please," and "Scoop the Pool." But Jack has developed the knack of putting people at ease, and he always manages to get music from even the most reluctant. So far, he says, the big prizes have eluded contestants, except for a special (portable) "pool," which went to a seaman from the American carrier Tarawa. In "Number, Please," the major award is valued at about £60, and the pool in "Scoop the Pool" at between £200 and £300. The programmes are being broadcast over the ZB network on Mondays and Wednesdays respectively. ★

N.Z. LISTENER, JUNE 25, 1954.

RONSON

WORLD'S GREATEST LIGHTER

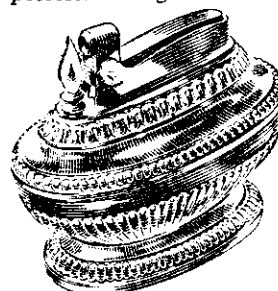


THE MOST
FASHIONABLE
GIFT . . .

to give or to get

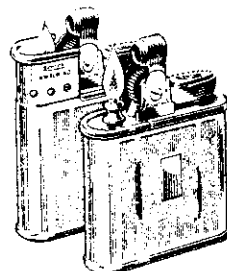
Sooner or later today almost everyone who is anyone gets a Ronson, for a Ronson is one of life's most useful, socially acceptable—and necessary—possessions. It gives that feeling

of superb confidence in lighting up with the best. As a matter of course, most people who have made their mark on the world carry a Ronson today. And you? May we suggest one of these—

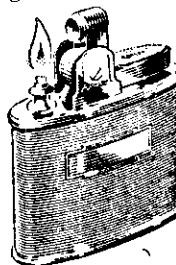


Ronson Queen Anne Table Lighter.

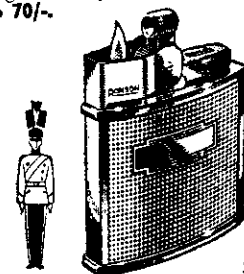
Beautifully designed and finished. A gift of lasting pleasure. Ronson Table Lighters — 102/6 to 117/6.



Ronson Whirlwind—With telescopic windshield, lights and stays alight in any wind. From 57/6 to 70/-. 36.K.7



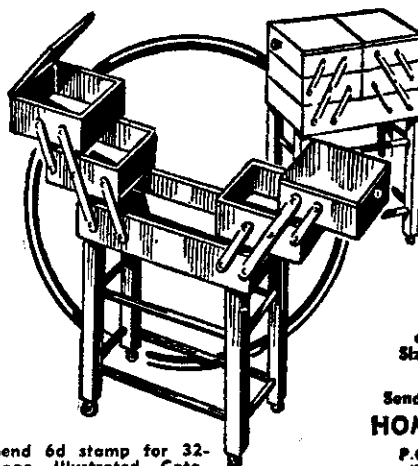
Ronson Standard — Shown in satin chromium. Other finishes in engine-turned chromium or leather. From 50/- to 60/-.



Ronson Cadet—A new, most economically priced Ronson. Available with windshield (as shown) 37/6 or without, 34/6.

Wholesale only: Ponsford, Newman & Benson 1948 Limited, P.O. Box 2085, Wellington.

SEE ALL SEWING BOX KIT SETS



QUICKLY AND EASILY ASSEMBLED

This practical and attractive U-BUILD-IT-KIT-SET of quality timber has been assembled by hundreds of satisfied Homecraft Assemblers with no previous woodworking experience. All parts accurately machined, drilled ready for assembly and accompanied by the necessary hardware, castors, etc., and easy-to-follow illustrated instructions which make this kit set a pleasant evening project.

Size 16in x 8in x 24in high.

PRICE 52/6 POST PAID

Send order and remittance to
Homecraft Assemblies,

P.O. BOX 1042, CHRISTCHURCH.
(72, Main North Road, Paparua.)

Send 6d stamp for 32-page illustrated Catalogue, containing over 100 Kitsets—Furniture, Nursery Furniture, Toys, Embroidery, Tapestry, etc.

NVE