

# GENERAL ELECTION—September 25, 1943

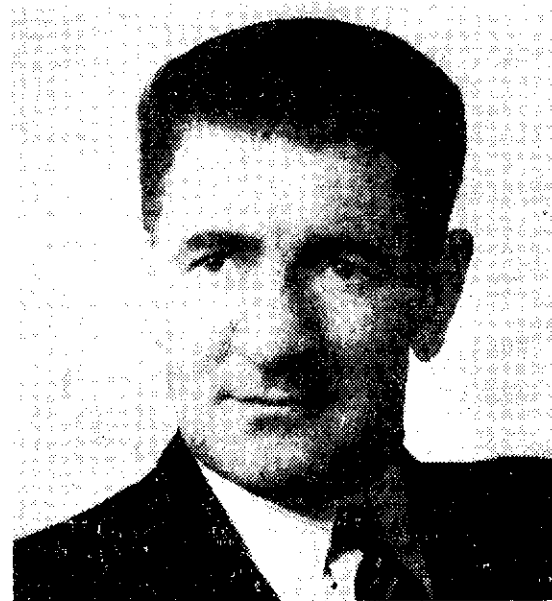
## "The Listener's" Chart For Polling Results



Spencer Digby photograph  
**THE RT. HON. PETER FRASER, P.C.**  
Leader of the Labour Party



**S. G. HOLLAND**  
Leader of the National Party



**JOHN A. LEE**  
Leader of the Democratic Labour Party

**N**O fewer than 291 candidates for the 76 European and four Maori seats were left in the field when nominations closed—115 more than in the General Election of 1938.

In addition, there has been a considerable increase in official and unofficial groups. In 1938 there was a straight-out fight between Labour and National. This year, in addition to the two major parties, there is a Democratic Labour Party, a Real Democracy Movement, an Independent Group, and several other groups related to but not actually affiliated with some of those movements.

### Few Straight-Out Contests

**ONE** result of this great rush of candidates is the fact that in the 80 electorates (European and Maori), there are only 13 contests in which there is a straight-out fight between two candidates: Bay of Plenty, Buller, Clutha, Dunedin West, Egmont, Motueka, Nelson, Rangitikei, Temuka, Waipawa, Waitaki, Westland and Eastern Maori.

There are also two electorates, both in the South Island, in which there will be no contest: Awarua and Maitua. The only nomination received for the first was Brigadier Hargest, and for the second, Major Macdonald, both members of the fighting forces, and these two will accordingly be elected. Both are Nationalists.

### ★ State of the Parties ★

OLD PARLIAMENT		NEW PARLIAMENT	
LABOUR	50	LABOUR	
NATIONAL	25	NATIONAL	
DEM. LABOUR	1	DEM. LABOUR	
OTHERS	4	OTHERS	
<b>TOTAL</b>	<b>80</b>	<b>TOTAL</b>	<b>80</b>

(Shortly before the General Election, three Members—two National, and one Labour—died, and had not been replaced.)

### RESULTS ON THE AIR

**ALL** results as they come to hand on September 25 will be broadcast. In other words, everyone who has a radio will be able, by tuning-in to any New Zealand station, to follow the poll from soon after the closing of the booths at 7.0 p.m.

To help our readers to do this we include an Election Chart on the seven pages following this one. All they will need in addition is a sharp pencil (**DON'T USE INK**). The first five spaces following each candidate's name are for progress figures. The sixth space is for the final result.

The general outline of broadcasting arrangements is as follows:

**Main National Stations:** Progress reports as they come to hand from 7.30 p.m. onwards (link-up with 2YA).

**Auxiliary stations in the four centres:** Summaries of results at intervals during recorded musical programmes.

**Napier, Greymouth and Invercargill stations:** Re-broadcast of 2YA, at 7.30 p.m.

**Commercial Stations:** Local results as they come to hand, and link-up broadcasts from 2YA at intervals for all totals. Regular features for the evening from 7.30 have been suspended by arrangement with the sponsors.

The polls close at 7.0 p.m., and the first results are expected within half an hour. The main stations will remain on the air till approximately midnight.

### Ten Women Candidates

**A**NOTHER interesting feature is the presence of 10 women candidates—two in one electorate (Hurunui). Of these, three are sitting members, all Labour, and of the seven others, one is Democratic Labour, one National, three Independents, and two Real Democracy Movement. One sitting member, Mrs. Polson (Nationalist), is not seeking re-election.

### Eleven New Faces

**W**HATEVER happens, the new House will have at least 11 members who are not members now—in eight cases (Manawatu, Patea, Remuera, Hurunui, Raglan, Dunedin West, Egmont, Mid-Canterbury), because members are retiring, and in three (Kaipara, Pahiatua, Northern Maori), because the sitting member has died and a by-election has not been held.

### Big Fields

**I**N four Auckland electorates (Auckland East, Auckland Suburbs, Remuera and Roskill), and also in Christchurch South, the electors will have to choose from six candidates. In Christchurch North, Eden, Hauraki, Wellington East and Wellington North, five names will be on the voting papers. But for Northern Maori the number of candidates is nine, and for Western Maori six. The election of the four Maori representatives will, of course, take place one day before the election of the 76 representatives for European electorates.

### Electors on the Rolls

**T**HE totals of electors given in our chart for each constituency last election are taken from the 1938 figures. In some cases they will not be more than approximately correct to-day. The total number of electors on the roll in 1938 was 995,173, of whom 924,057 exercised their votes.