



**For brilliantly
clean and
antiseptic surfaces
use Poliflor**



**For
COUGHS,
COLDS &
INFLUENZA**



**WOODS' Great
PEPPERMINT CURE**

W. E. WOODS LTD., LAMBTON QUAY, WELLINGTON.

PEOPLE IN THE PROGRAMMES



RACHEL SCHOFIELD (mezzo-soprano), who will sing five songs from the 2YH (Napier) Studio on Tuesday, May 4. A song by German and one by Spohr will be included in her recital

RENA EDWARDS (soprano), will sing two songs by Delius and two by Moussorgsky from the 2YA Studio on Thursday, May 6



FREDA STRONG (soprano), and **CLAUDE BURROWS** (baritone), who will be the soloists in a programme with the Woolston Brass Band (R. J. Estall, leader), from 3YA on Monday, May 3



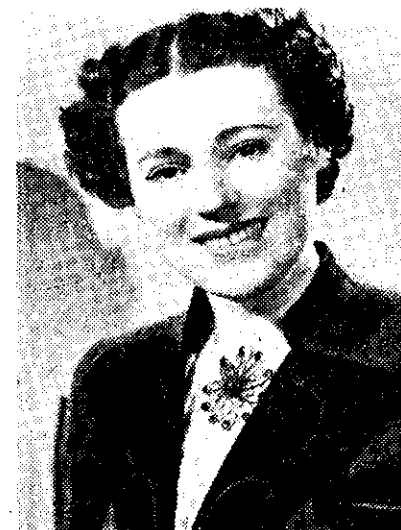
JUDITH TERRY. She will read an account of Miss Alice Maxwell's memories of the Mission House from 1YA on Monday, May 3



CLARA ROUSE (contralto), who was a soloist at the recent concert of the Dunedin Male Voice Choir



DR. R. GARDNER, who spoke from 4YA on Tuesday this week in the "Winter Course" series



ADELE RONSON, American radio actress. She will be heard from 4ZB on Wednesday, May 5, in "The Importance of Being Ernest," in the "Dramatisations of the Classics" series