

# PACIFIC SPOTLIGHT

## Topical Talks From Station 3YA

THE last few months have, with disconcerting thoroughness, thrown the Pacific area under the spotlight of world affairs. Names unknown before have suddenly become of vital importance. Map after map pours from the daily press showing naval stations, oil bases, airfields, railways, strategic points that many of us barely knew existed. And if we *did* know where the British flag flew (or the Dutch flag or the Portuguese flag) did we know how and when it was planted there? Probably most of us just took that part of the world as we found it.

Yet, if we accepted the Pacific era as stable we were wrong. Even before the present conflict few parts of the world had changed so quickly. A hundred years ago Japan was a mediaeval feudal island empire refusing any contaminating contact with the outer world. China was still the great celestial Empire although, just a hundred years ago, we forced open the gates of her trade and compelled her, to our shame, to accept opium. Russia had not yet spread to Pacific waters. Germany was still a loosely-knit confederation of disunited states. Because the greed of early exploiters destroyed the rubber of the Congo, rubber was produced in Malaya and the Dutch East Indies. Because

Napoleon III's throne needed bolstering, the French planted their flag in Indo-China. Because the growing bourgeoisie class of Europe needed soap and candles, the traders scoured the islands for copra. Because each of the great European nations wanted its place in the sun, there began the headlong rivalry for colonies, gold mines, naval stations, airports.

The new Winter Course talks from 3YA are designed to throw a spotlight on one place after another in the Pacific, showing now the significance of the teeming millions and the wealth of raw materials in South Asia, now the rapid growth of industrialisation in Japan, now the entry and importance of the United States as a power in the Pacific. K. B. Cumberland and G. T. J. Wilson will open with a discussion on Wednesday, April 15, at 7.38 p.m. on the Pacific Area generally. C. G. F. Simpkin, Dr. G. Jobbens, Dr. H. N. Parson, and A. H. Clark, will also take part in the later discussions on South East Asia, agricultural and industrial Japan, Russia in the Pacific, and other Pacific topics. These talks should help listeners to understand the present conflict.

### THE LISTENER CROSSWORD

(Answer to No. 94)

I	N	S	T	I	G	A	T	I	O	N
E	O	H	R	R						A
V	E	N	T	I	L	A	T	E	C	U
E	C	N	V	A	H					U
N	O	O	N	S	E	A	S	H	E	L
I	N	H	N	U	S					T
N	O	F	E	A	R	W	R	I	T	H
G	O	R	A	E	R					R
S	T	R	I	D	E	N	T	R	A	T
T	M	S	N	P	T					T
A	M	I	H	A	E	M	A	T	I	T
R	S	I	A	R						Q
S	T	I	P	U	L	A	T	I	N	G

We had to print this issue earlier because of Easter, and the Crossword itself did not reach us in time. It will be published next week.

(Continued from previous page)

stand it. There was no general collapse until the finale when even the first fiddles lost their grip in the whirl of sound.

The symphony was preceded by Cole-ridge-Taylor's "Bamboula," which gave the brass plenty of work, and a sense of responsibility seemed to have made them work at their parts a bit, but they are still too coarse to be called orchestral players. There were times though (in the Beethoven) when I felt that all the players really had the music inside themselves, and I think it may not be long before we can say they are a good orchestra.



Here's charm as a gift . . . when you least expect it! With every box of HULA FACE POWDER bought during April you will receive absolutely FREE one full size Hula Lipstick Refill. This lipstick refill will fit almost any brand of Lipstick case and is obtainable in the eight alluring Hula shades. Buy your Hula Cosmetic Set to-day . . . Hula Powder and Hula Lipstick for only 2/6.



Woolworths, MacDuffs, Selfridges and all Dealers.

## The strong shouldered edge bears the load

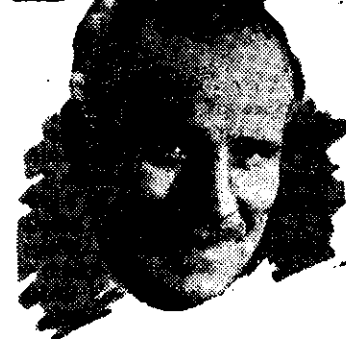
Three distinct angles in the sharpening process of every Blue Gillette form a strong steel shoulder which bears the load. That is why every Gillette serves you longer and shaves you cleaner . . . But you must treat the delicate edges fairly.



Not even the wrapping is allowed to touch the edges of a Gillette when it is packed—hold one to the light and see. Unwrap the blade carefully and hold by the ends—do not touch the edges. A little care in this regard will give you many more delightful shaves.

Blue Gillette Blades 5 for 1/6.

## BACKACHE



*Goes*

DE WITT'S PILLS  
SOON ENDED PAIN

Ten Years Later. "I am absolutely free from backache after taking De Witt's Pills some years ago."

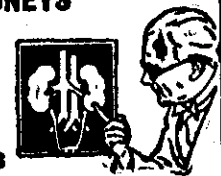
All too often backache is a sign of kidney trouble. So take heed of backache, the danger sign that weak and sluggish kidneys must be cleansed and strengthened. Turn to De Witt's Pills, the trusted household remedy, and rely on them for prompt and sure relief.

From one end of the country to the other, wherever you go, you'll find people who swear by De Witt's Pills. Let us quote just this one instance:—

Mr. A. W. writes:—"I suffered severe pains across my back for twelve months. My work causes a lot of stooping and my kidneys became painful. I told a friend and he told me how De Witt's Pills benefited him. I immediately obtained a bottle and soon got relief, and now I am fit and strong again—in perfect health."

### WEAK KIDNEYS

lead to  
Backache  
Cystitis  
Lumbago  
Joint Pains  
Rheumatism  
Sciatica Disturbed Nights



In 24 hours from the first dose you will have proof that De Witt's Pills are acting directly on your weak kidneys. Backache stops. Your vigour and vitality are increased. Take De Witt's Pills for a little while and you will feel better than you have done for years.

## DeWitt's KIDNEY AND BLADDER PILLS

Made specially to end the pain of Rheumatism, Lumbago, Sciatica, Joint Pains and all forms of Kidney Trouble. Of chemists and storekeepers everywhere, prices 3/6 and 6/6 (including Sales Tax).