

PROGRAMMES



Spencer Digby photograph
will present a recital of 18th century
music from Station 2YA's studio at 8.37
p.m., November 3



"SNOWY," 22B's gardening expert,
gave a demonstration of lawn laying at
Lower Hutt, Wellington, on a recent
Saturday afternoon. It was the first of
a series, and at the next he will show
how to build a rock garden



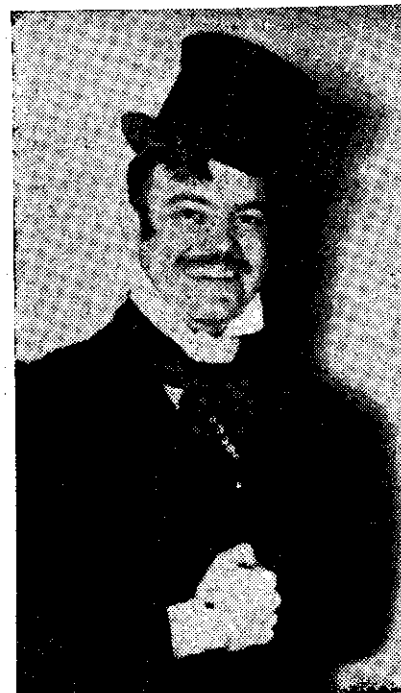
GEORGE VRYER is an old-established personality at 12B. He has been heard
from that station conducting special sessions



MOIRA McILREVEY, soprano, will
give a studio recital from Station 3YA
at 8.5 p.m. on Monday, November 3



Alan Blakey photograph
GILBERT O'SULLIVAN will be heard
in "Fashions in Melody," a 1YA studio
presentation next Tuesday night by
Ossie Cheesman and his Orchestra



MAURIE POWER "in character" for
his session of old tunes entitled "The
Old Music Box," which he presents
from 22B every Saturday at 9.15 p.m.

Items From The ZB's

A PLEASANT three-quarter hour's
programme of old tunes is pre-
sented from 22B every Saturday
evening at 9.15 by Maurie Power
whose picture appears on this page "in
character." The session has a distinctive
old-world atmosphere about it, and
many of the songs are old enough to
be new to the younger generation. Few
of them lose through being rendered by
modern orchestras.

"SNOWY," who conducts 22B's Gar-
dening Session, decided that he
would be helping gardeners still further
if he could give them a practical demon-
stration of certain fine points, and a
recent Saturday afternoon saw the first
of what will be a series of demonstra-
tions in the grounds of Griffin's factory
in Lower Hutt, Wellington. Laying a
lawn was the problem "Snowy" tackled
and with the help of a microphone and
a public address system he was able to
give the 200 spectators who turned up
an interesting lecture on this difficult
subject. Several of 22B's personalities
including G. P. Brodie, acting-station
director, were there to welcome spec-
tators. The third section of "Snowy's"
competition for the Gardening Cup
closes this Saturday, November 1, and
in spite of the damage done to Well-
ington gardens by floods, it is expected
that there will again be a large num-
ber of entries. The cup is decided on
aggregate of points in the sectional com-
petitions.

A PART from a few notable exceptions
such as "There'll Always Be An
England," "Roll Out the Barrel" and
"Kiss Me Goodnight, Sergeant-Major,"
this war has not given birth to the rous-
ing songs that the last war did. The
number being composed may actually
be greater, but surprisingly few of them
show any signs of "catching on" like
"Roses of Picardy," "Tipperary," "Pack
Up Your Troubles" and "There's a
Long, Long Trail a-Winding." Old and
new patriotic songs are all presented
in a regular session from 42B every
Thursday at 6.30 p.m. *Thumbs Up* is
its appropriate title.

ONE of the most remarkable artists
heard from Station 3ZB is Gwen
Webster, who has been blind from birth,
but who plays the piano with consid-
erable talent, sings well, and has a wide
repertoire of songs. She has never
attended any school, having learned
Braille for six years from Miss L.
Campbell, who though blind herself, has
done much to help other blind people
in Christchurch. Under Miss Campbell's
guidance, Gwen also became an expert
typist, and prepares her radio sessions
herself, typing two scripts, one on an
ordinary typewriter and the other in
Braille. In her weekly session, which is
on the air from 5.30 p.m. to 6 p.m.
every Sunday, Gwen presents a medley
of popular recordings, songs at the
piano and mandolin-guitar solos.