



Are you only
HALF the man
you could be?

Why get up in the mornings feeling half asleep?
Why go off to work feeling half alive?
And come home in the evening feeling half dead?
What you need, my boy, is a tonic! Kruschen Salts will buck you up. Kruschen cleanses your stomach, makes you ready for meals. Kruschen flushes your kidneys, braces your liver, clears your system of poisons, neutralises acidity, sweetens your breath, invigorates your blood. Kruschen washes you internally. Kruschen puts you into top gear.

KRUSCHEN
The TONIC Salts

Kruschen does not form a habit, so there is never need to increase the dose—as much as will cover a sixpence. 2/5 a bottle at chemists and stores.

K1.7.41



**HAVE YOU A
HEALTH WORRY**

FREE, PERSONAL AND CONFIDENTIAL SERVICE IS OFFERED TO YOU—

by Bettie, consulting chemist, Christchurch, who has solved health worries for numerous sufferers throughout the country. ASTHMA... CATARRH... NERVOUS DISORDERS... KIDNEY AND LIVER troubles... STOMACH ailments, etc. Specialised and personal service is given on these and other ailments. All correspondence etc., under plain wrapper Write in confidence to:

BETTIE, Chemist, CHRISTCHURCH

MONDAY

SEPTEMBER 22

COMMERCIAL

1ZB AUCKLAND
1070 k.c. 280 m.

- 6. 0 a.m. Breakfast session, with News from London at 6.0, 7.0 and 8.45
- 9. 0 Aunt Daisy
- 9.45 Morning reflections
- 10. 0 THE FEATURE HOUR:
 - 10. 0 Rhapsody in Rhythm
 - 10.15 Those Happy Gilmans
 - 10.30 Dramas of Life: "Gipsy Heart"
 - 10.45 To-day's Children
- 11.30 The Shopping Reporter (Marina); guest speaker, Dr. Guy Chapman
- 12.15 p.m. News from London
 - 1. 0 Songs that live forever
 - 1.45 & 3.30 The 12B Happiness Club
 - 2. 0 The House of Dreams
 - 2.15 Lost Empire
 - 2.30 The Home Service session (Gran)
 - 4. 0 Young Marrieds' Circle (Molly)
 - 5. 0 Molly and her Merry Maids
 - 5.30 The Junior Quiz
 - 6. 0 Air Adventures of Jimmie Allen
 - 6.15 News from London
 - 6.30 "What's That Noise?" Quiz
 - 7. 0 Fred and Maggie Everybody
 - 7.15 This Twentieth Century
 - 7.30 Real Life Stories
 - 7.45 The March of Time
 - 8. 0 Chuckles with Jerry
 - 8.15 Easy Aces
 - 8.42 Pageant of Empire
 - 9. 0 You be the Detective!
 - 9.30 Variety
 - 10. 0 Kings of Jazz: Hal Kemp
 - 11. 0 News from London
 - 12. 0 Close down

2ZB WELLINGTON
1130 k.c. 265 m.

- 6. 0 a.m. The Yawn Patrol, with News from London at 6.0, 7.0 and 8.45
- 7.15 Looking on the bright side
- 9. 0 Aunt Daisy
- 9.45 Morning reflections (Uncle Tom)
- 10. 0 THE FEATURE HOUR:
 - 10. 0 Rhapsody in Rhythm
 - 10.15 The Kitchen Quiz
 - 10.30 Dramas of Life: "Everything in a Name"
 - 10.45 Home Sweet Home
- 11. 0 Musical programme
- 11.30 The Shopping Reporter (Suzanne)
- 12. 0 The Mid-day Melody Menu
- 12.15 p.m. News from London
 - 1. 0 The 2ZB Happiness Club notes
 - 2. 0 Betty and Bob
 - 2.15 Lost Empire
 - 2.30 Home Service session (Mary Anne)
 - 3. 0 Pep and popularity
 - 3.15 Melodious memories
 - 3.30 Afternoon tea session: Cavalcade of Drama, "Napoleon Bonaparte"
 - 4. 0 Young Marrieds' Circle (Tony)
 - 4.30 Wit and whatnot
 - 5. 0 The children's session
 - 5.30 The Junior Quiz
 - 6. 0 Air Adventures of Jimmie Allen
 - 6.15 News from London
 - 6.30 The Enemy Within
 - 7. 0 Fred and Maggie Everybody
 - 7.15 This Twentieth Century
 - 7.30 Real Life Stories
 - 7.45 Tunitals, Teller of Tales
 - 8. 0 Chuckles with Jerry
 - 8.15 Easy Aces
 - 8.45 Give It a Name Jackpots
 - 9. 0 You be the Detective!
 - 9.30 Variety programme
 - 10. 0 News from London
 - 12. 0 Close down

3ZB CHRISTCHURCH
1430 k.c. 210 m.

- 6. 0 a.m. Breakfast session, with News from London at 6.0, 7.0 and 8.45
- 7. 0 Fashion's fancies
- 9. 0 Aunt Daisy
- 9.45 Morning Reflections

- 10. 0 THE FEATURE HOUR:
 - 10. 0 Rhapsody in Rhythm
 - 10.15 Hawaiiana (Ari Pitama)
 - 10.30 Dramas of Life: "Wedding Delayed"
 - 10.45 To-day's Children
- 11.30 The Shopping Reporter
- 12. 0 The luncheon session
- 12.15 p.m. News from London
 - 2. 0 The House of Dreams
 - 2.15 Lost Empire
 - 2.30 The Home Service session (Jill)
 - 3. 0 Cheer up tunes
 - 3.30 The Movie Quiz
 - 4. 0 The Young Marrieds' Circle
 - 5. 0 The children's session
 - 5.15 The Merry-go-Round
 - 5.30 The Junior Quiz
 - 6. 0 Air Adventures of Jimmie Allen
 - 6.15 News from London
 - 6.30 Ailsa Crompton in Mood Music
 - 7. 0 Fred and Maggie Everybody
 - 7.15 This Twentieth Century
 - 7.30 Real Life Stories
 - 7.45 The Enemy Within
 - 8. 0 Chuckles with Jerry
 - 8.15 Easy Aces
 - 8.45 The Gardening session (David Combridge)
 - 9. 0 You Be the Detective!
 - 9.30 Variety programme
 - 11. 0 News from London
 - 12. 0 Close down

4ZB DUNEDIN
1280 k.c. 234 m.

- 6. 0 a.m. Breakfast session, with News from London at 6.0, 7.0 and 8.45
- 9. 0 Aunt Daisy
- 9.45 Morning reflections (Uncle Tom)
- 10. 0 THE FEATURE HOUR:
 - 10. 0 Rhapsody in Rhythm
 - 10.15 Cavalcade of Drama: "Edgar Allen Poe"
 - 10.30 Dramas of Life: "Tombs of the Ancient"
 - 10.45 To-day's Children
- 11.30 The Shopping Reporter (Jesale)
- 12. 0 Lunch hour tunes
- 12.15 p.m. News from London
 - 1.45 Those Happy Gilmans
 - 2. 0 The House of Dreams
 - 2.15 Lost Empire
 - 2.30 The Home Service session (Joyce)
 - 3.15 Stealing Through the Classics
 - 3.30 The Kitchen Quiz
 - 4. 0 The Young Marrieds' Circle
 - 5. 0 The children's session
 - 5.22 The Happy Feet Club
 - 5.30 The Junior Quiz
 - 6. 0 Air Adventures of Jimmie Allen
 - 6.15 News from London
 - 6.30 Melodies in waltz time
 - 7. 0 Fred and Maggie Everybody
 - 7.15 This Twentieth Century
 - 7.30 Real Life Stories
 - 7.45 Spelling Jackpots
 - 8. 0 Chuckles with Jerry
 - 8.15 Easy Aces
 - 8.45 "What's that Noise?" Quiz
 - 9. 0 You be the Detective!
 - 10. 0 New recordings (Arlint)
 - 11. 0 News from London
 - 12. 0 Close down

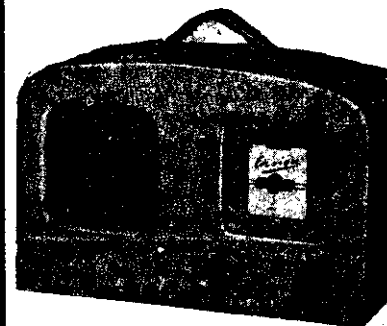
2ZA PALMERSTON Nth.
1400 k.c. 214 m.

- 6. 0 a.m. Breakfast session, with News from London at 6.0, 7.0 and 8.45
- 9. 0-9.30 Aunt Daisy
- 5.45 p.m. Dinner diversissements
- 6.15 News from London
- 6.45 Whose is the Voice? (Results)
- 7.15 This Twentieth Century
- 7.30 The Hit Parade
- 7.45 Real Life Stories
- 8. 0 Chuckles with Jerry
- 8.45 The Enemy Within
- 9. 0 The Announcer's Programme
- 10. 0 Close down

These programmes are correct as we go to press. Any last-minute alterations will be announced over the air.

All programmes in this issue are copyright to The Listener, and may not be reprinted without permission.

**TURN THE SWITCH
AND IT PLAYS!**



**Anywhere! Anytime!
No Aerial, Earth or
Power Plug Needed**

For motoring, camping, holiday making, or for use in the home or in the garden, or about the farm, there's nothing like the—

**ENSIGN
Portable
RADIO**

You can take it wherever you go, and enjoy the programme from your favourite station. No connections whatsoever are necessary. Just switch it on, and the enclosed batteries and built-in loop aerial do the rest. Its 5-valve Superhet circuit, using the new 1½ volt valves ensures you 7-valve performance, full tone quality, and remarkable economy. Weight, 19lbs., size, 14in. x 8½in. x 8½in. Covered in washable luggage fabric, with strong carrying handle. The Ensign is the best looking portable radio available, and it is ruggedly built to stand rough handling. All ready to play—nothing else to buy.

ONLY **£19-5-0** COMPLETE

TRY IT AT OUR RISK!

**Fill in
and Send
the Coupon!**

To the ELECTRIC LAMPHOUSE LTD.,
11 MANNERS ST., WELLINGTON.

Enclosed is £19 5s. Please send me, freight paid, an "ENSIGN" Portable. I will try it out, and if I am not well pleased with it, I will return it within 7 days, in the same condition as received, and you will refund my money.

NAME.....

ADDRESS.....

..... Listener