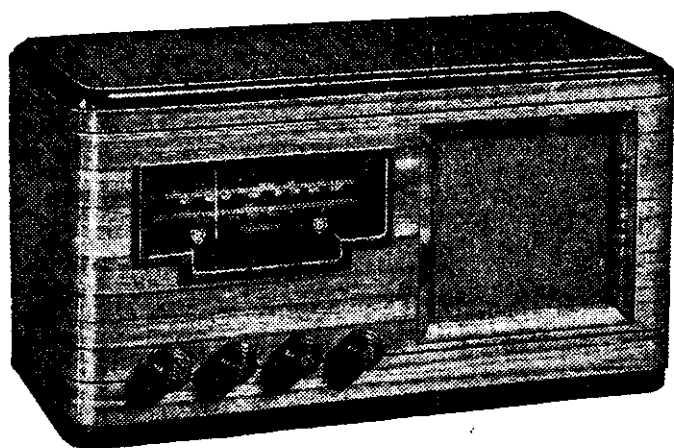


Courtenay
gives you **BAND SPREAD**
TUNING on ALL short-
wave models



**"STUI"—5-VALVE WORLD-WAVE WITH
BAND-SPREAD TUNING**

In this simple, dignified highly polished cabinet is Courtenay's powerful 5-valve world-wave radio with tone control, slide-rule spin wheel dial, and 8-inch speaker.

★ ★ ★

**COURTENAY USES NEW TYPE
VALVE**

All 1941 Courtenay sets are equipped with special new valve, giving even greater sensitivity, power economy, and range, and eliminates background noises to vanishing point.

Agents and Distributors

TURNBULL & JONES LTD.

Wellington, Auckland, Christchurch, Dunedin,
Palmerston North and Hamilton

SEE YOUR LOCAL DEALER

Advertisement of Turnbull & Jones, Ltd.



Advice on Health (No. 10)

TUBERCULOSIS—[III]

(Concluding Article)

(Written for "The Listener" by Dr. H. B. Turbott, Director of the Division of School Hygiene, Health Department)

BEFORE considering the sphere of X-rays, let us get the facts already discussed clearly in mind again. Tuberculosis is a germ disease, spread directly from one person to another, or indirectly through sputum-touched things. Just because one's father, mother, brother or sister had it, there's no reason why we should go down to it. All we have to do is to take adequate care against the germ-laden sputum, and use modern medical science to make sure we are not already infected and if so, that we are healed over and safe. Or would you rather wait till those symptoms show up, indicating active and progressive disease? No! All other members in a tuberculous household will be tuberculin tested to see whether the germs have yet gained a lodgment in the body, and if so, will be X-rayed to make sure they are already healed, or to reveal the disease in its early curable stage.

"Our Most Powerful Ally"

Early symptomless disease cannot be found by any other method than X-ray diagnosis. In cases where the disease has advanced, the X-ray will reveal the site and extent of the trouble, and guide the specialist as to the best form of treatment. It is our most powerful ally in uncovering the disease. In the past, this modern aid has been too costly, but a cheaper method is in view. Several of our big hospitals are now using experimentally a miniature X-ray photography plant that will enable thousands to be X-rayed at a very small cost. But that doesn't help the family affected now, and we really have got it into our heads that tuberculosis is a family disease, and it is the affected family as a unit that needs speedy modern diagnosis and help. Where can they get it?

Well, the family doctor will be able to arrange for tuberculin tests and X-rays. If you haven't got a family doctor, you can still get every member of the family tested and X-rayed free of charge through the Health Department and public hospitals. Beginning this year, all new cases reported, are visited by the district nurse and school medical doctor. The family concerned is invited to recognise the threat to family health and meet it by consenting to employ the modern aids to early diagnosis. The tuberculin testing is arranged, and for the positive reactors, X-ray appointments are made. If any disease is discovered, a visit to the tuberculosis specialist is the next step in the scheme to obtain the advice needed to heal over that very early disease. This is the contribution of X-rays to the fight against tuberculosis—early detection of hidden disease, revealing at the same time the actual site and extent of the trouble, and whether it is already healed, or needs immediate care to achieve quick cure. You can appreciate how the

(Continued on next page)

NEW ZEALAND LISTENER, JULY 11