

LESSONS IN MORSE

(15)

The following is a draft of Signalling Lesson No. 15, broadcast from Stations 2YC, 1ZM and 3YL at 10 p.m. on January 27, 28 and 29:

IT was pointed out by the instructor that previous lessons had shown the correct manner of holding the key, how to send correctly, and what faults to avoid. But as it was not possible under the radio broadcasting method of tuition for instructors to watch trainees sending, and correct faults, the method of sending which is regarded by the instructors as the correct one would be repeated.

Here It Is:

Sit slightly to the left of the key so that the hand will fall naturally on to the key knob. Rest the first and second fingers lightly on the knob of the key with the thumb pressing lightly on the inside of the knob. The third and fourth fingers will fall into a naturally relaxed position. The forearm should be in line with the key lever and level with the knob of the key. The upper arm should be at an angle of 45 degrees with the body, and the elbow about six inches from the side of the body. The first and second fingers should be bent at the knuckles, forming a convex figure. These fingers must never be lifted from the key knob when sending; otherwise a tapping style of operating will result, causing poorly formed dots and a loss of rhythm.

A Few 'Dont's':

Don't grip the key. Always practise with the arm, wrist and hand muscles relaxed. If the arm tires quickly, say after sending for five or ten minutes, then something is wrong with the method of holding the key, and it should be corrected.

Don't send fast until capable of doing so. Fast sending in the early stages of learning only tends to develop bad habits, such as clipping, stumbling, and bad spacing.

Don't rest the elbow on the table, as this tends to reduce the flexibility of the wrist and forearm.

In order to overcome any difficulty that may be experienced in spacing uniformly between words, the following procedure is suggested: Try removing the hand from the key and lightly touching the table beside the key after each word is sent. This procedure will give uniform spacing between words and may be of assistance.

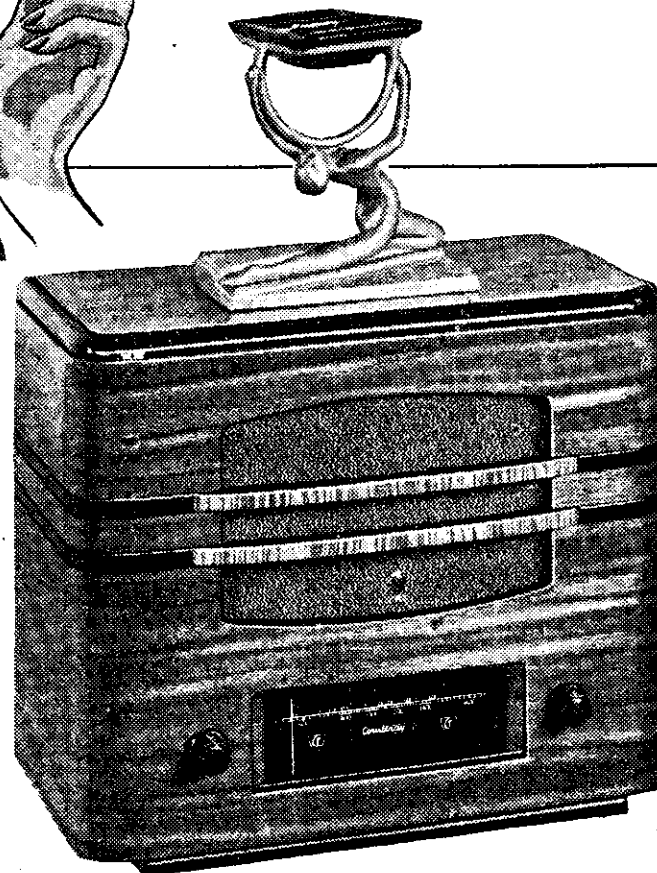
The remainder of the lesson was taken up in receiving practice, a preliminary practice being given for the test which is to take place next week.

Income Tax

The Commissioner of Taxes draws the attention of taxpayers to the notification appearing in this issue that the due date of payment of income-tax is on Wednesday, February 12, 1941. Additional tax will accrue if the tax is not paid on or before March 5, 1941. The demands will be posted from the office of the Commissioner of Taxes on or about February 5, 1941. Demands must be presented with all payments, and if a demand has not been received the Commissioner should be communicated with.



GUESS AGAIN
YOU'RE MUCH
TOO HIGH!



COURTENAY 'MERE'

5 Valve Broadcast Mantel Model

NO OTHER RADIO
NEAR ITS PRICE
CAN MATCH IT

COURTENAY MERE

Agents and Distributors

TURNBULL & JONES LTD.

Wellington, Auckland, Christchurch, Dunedin, Palmerston North and Hamilton

SEE YOUR LOCAL DEALER

Advertisement of Turnbull & Jones, Ltd.