

Why "Testament of Friendship" Was Written

June 7, 1940.

Dear Miss Glanville,

Please forgive me for replying to your letter from an hotel. I am at Swanage for my daughter's half term celebrations; she is at school here. We hope it is a safe area, though nowhere on this island (which is gradually changing into a fortress) is now really safe.

I am so glad to have your kind letter and to know that you have reviewed "Testament of Friendship" over the air—also "South Riding" and "Letters to a Friend." One of my own chief objects in writing "Testament of Friendship" was to make Winifred Holtby's work better known in many parts of the world where she was only a name, and it does seem to be achieving this object. I have had letters from all over the world during the past six months from reviewers and broadcasters who tell me that, thanks to my book, they have drawn new attention to those which Winifred wrote. I feel a sense of personal gratitude to

(Continued from previous page)

Emerald green is harsh in silks, unless you have a perfect complexion and red hair to go with it. However, in a dull-faced material, such as wool jersey, it is easy to wear. Blot-paper pink is a success in cashmere or fine tweed, but would scare you off in brocade or crepe-de-chine. Opposed to this, scarlet serge is a knock-out blow to the eye, but scarlet lace in a ballroom can be alluring, particularly set against white shoulders and arms.

Now that spring is on its way, you will have an opportunity of trying out some of these colour notions. A little serious reflection will bring you surprising and delightful results.

Yours cordially,

Cynthia

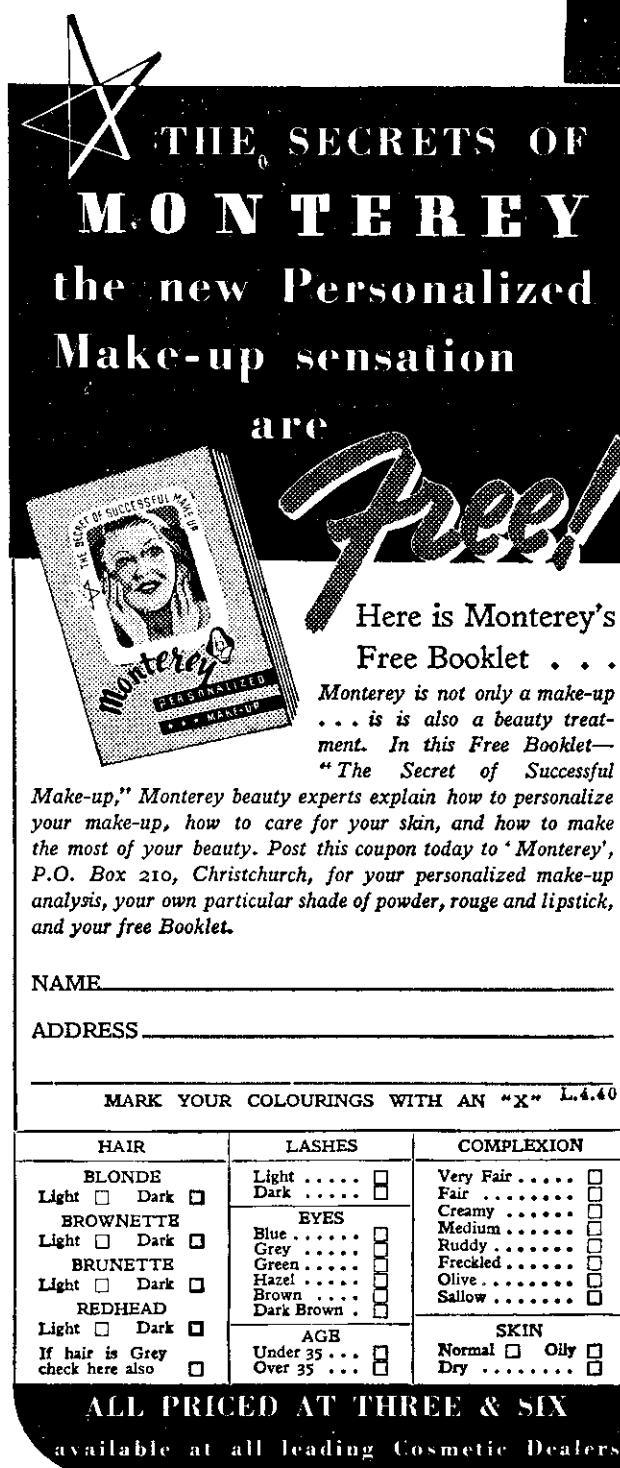
you and others who have done this.

The situation which confronts us here is a great deal more dreadful to-day than it was when you wrote me on April 12. All literary

and artistic life is at a standstill: in fact everything has sunk below the horizon but the emergency itself. It seems, at this moment, more than probable that my nursing experience of the last war, related in

"Testament of Youth," may well be called on again. I am glad you talked to hospital nurses about Winifred Holtby.

Yours sincerely,
VERA BRITAIN.



How many girls know their own C.B.—that is, their cosmetic blend? Cosmetic Blend is the skilful selection of cosmetic shades to suit *your* complexion, *your* hair, *your* eyes—a completely personalized make-up. You at least can be sure you are cosmetically correct by filling in the complexion analysis below. At the same time send for your copy of Monterey's Free Booklet . . . it contains the solution to all your make-up and beauty problems. Follow the Monterey way to skin health and skin beauty.

Monterey
PERSONALIZED
Make-up

M.4.27

N.Z. Distributors: Wilfrid Owen Ltd., P.O. Box 210, Christchurch.