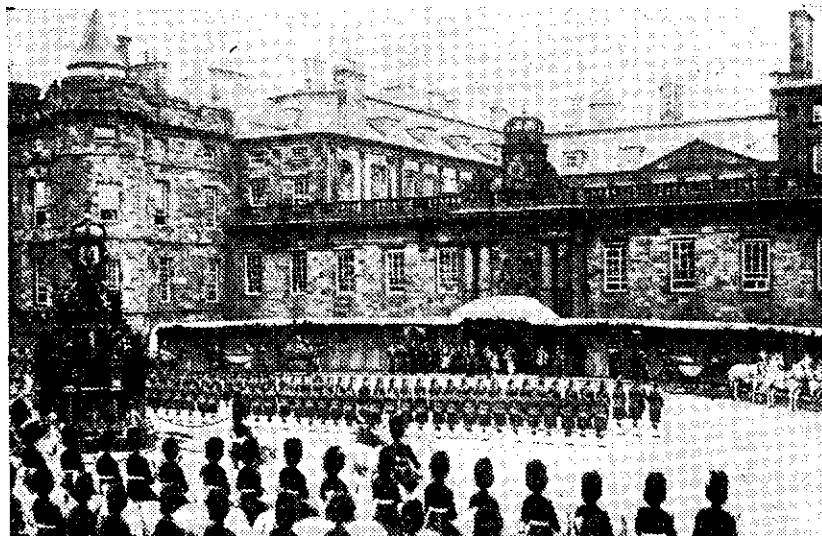


# ROMANTIC HOLYROOD

Where Mendelssohn Conceived A Symphony



In the romantic surroundings of Holyroodhouse, Mendelssohn received the inspiration for his famous "Scottish" Symphony, which is to be played by 3YL, Christchurch, at 8 p.m. on Saturday, July 13. The illustration shows the main entrance of the old palace at the time of the State visit of King George VI. and Queen Elizabeth

IN April 1829, at the age of twenty, Mendelssohn left his home and family for the first time in his life, to visit England. He appeared in London both as a pianist and composer, and was received with the warmest of welcomes by the British world of music.

The whole musical season was indeed something of a personal triumph for the young foreigner, and in some ways he must have been quite glad to reach the end of those strenuous weeks and to set off for a visit to Scotland. He reached Edinburgh on April 28.



**"I dare not put it off!"**

Just as soon as any man assumes the responsibility of a family, with all its attendant obligations—it is urgently necessary that he arrange his testamentary wishes to safeguard his family's future. The Public Trustee will gladly advise you and prepare your Will, free of charge, if appointed executor. The Public Trust Office, for over 65 years, has successfully managed all kinds of estates—and is ready to take over the administration of YOUR estate immediately the necessity arises.



*The*  
**PUBLIC TRUSTEE**

Consult the Public Trustee or one of his responsible officers. Call, write, or send for a free copy of the informative booklet just issued, entitled "Safeguarding Your Family's Future."

11/8

## CLIMBING UP AGAIN

### Total Of Radio Licences

After a seasonal drop in April, the total of radio licences in New Zealand is climbing up again towards the record total of March, when there were 346,838 licences held in the country.

The figure at the end of May, states the Director-General of the Post and Telegraph Department (J. G. Young), was 340,073.

This table sets out the position with comparisons against figures for earlier months and last year:

	1940	1939
February 29 (28)	336,618	313,832
March 31	346,838	319,879
April 30	328,172	290,002
May 31	340,073	316,318

In the total of 340,073 as at the end of May this year are included 337,831 receivers.

This total is made up by the following district totals: Auckland, 109,687; Canterbury, 62,830; Otago, 45,431; Wellington, 119,883.

It was there in the old palace of Holyroodhouse that the idea of a Scottish Symphony first occurred to him.

In his own words:

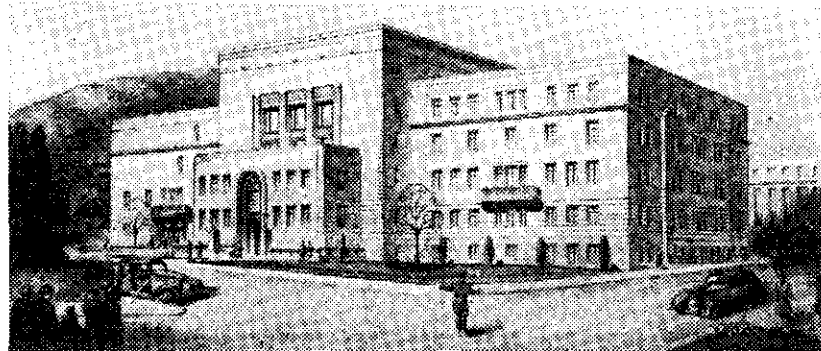
"In the evening twilight we went to-day to the palace where Queen Mary lived and loved: a little room is shown there with a winding staircase leading up to the door; up this way they came, and found Rizzio in that little room, pulled him out, and three rooms off there is a dark corner where they murdered him. The chapel close to it is now roofless, grass and ivy grow there, and at the broken altar Mary was crowned

Queen of Scotland. Everything around is broken and mouldering, and the bright sky shines in. I believe I found to-day in that old chapel the beginning of my Scottish Symphony."

The work was not actually completed until 1842. It was played repeatedly in Germany with invariable success, and at its performance at a Philharmonic concert in London under Mendelssohn's own direction, in June of that year, it met with the most enthusiastic reception. After the performance, Mendelssohn, by her Majesty's permission, dedicated it to Queen Victoria.

## NO NEW BUILDING FOR NBS

Broadcasting House Construction Postponed



An architect's drawing of Broadcasting House, on a site behind Parliament Buildings, Wellington. Construction has been postponed because of the war.

TO conserve funds and limit the demands on steel supplies as much as possible, the Minister in Charge of Broadcasting (the Prime Minister) has announced that the construction of Broadcasting House in Wellington has been postponed.

The new studios in Dunedin will also have to wait, he said. It had been planned to convert the old Garrison Hall for the purpose.

Although the accommodation was urgently needed, said Mr. Fraser, it would have to give place to more urgent war needs.

Plans for new stations to improve the provincial coverage had also been postponed.

Foundations for Broadcasting House have been completed. Precautions will

be taken to see that they do not deteriorate before plans can be resumed.

They have been designed to carry a steel-framed concrete building of five floors.

A feature of the building was to be studios completely insulated from the rest of the building. They were to be constructed in brick, and insulated from the main building with rubber. Provision had been made for several small studios for talks, etc., as well as for larger studios, one capable of being used as a small concert chamber.

The National Broadcasting Service headquarters at present share a small, two-story building with the offices of Station 2YA. Head office branches are scattered through other buildings in Wellington.