

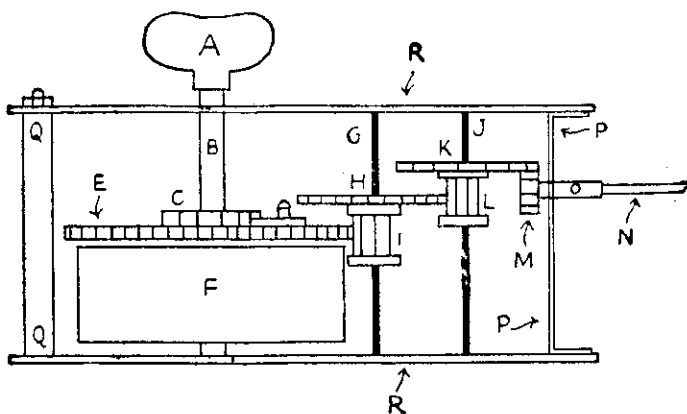
# BOYS AND GIRLS

The grown-ups have pages about their own programmes in other parts of "The Listener," so here is a corner specially for boys and girls. If you want to see what features are being broadcast for you each week, watch this page. Here, too, we give you items of news about the programmes.

## CLOCKWORK DRIVE FOR MODEL BOAT

—How It Is Made From An Old Alarm Clock

THOSE of you who have finished making the model launch, the building details of which we have already published, should find this article by "Modelmaker," of 1YA Children's Hour, very helpful. "Modelmaker" will broadcast the construction details in the hour from 1YA on Tuesday, May 7, so be sure to listen.

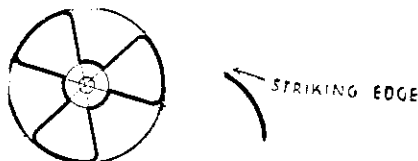


A.—Winding handle  
B.—Main spindle  
C.—Ratchet  
D.—Pawl

E.—Mainspring gear wheel  
F.—Mainspring  
G.—Spindle (second)  
H.—Gearwheel

I.—Pinion  
J.—Third spindle  
K.—Alarm wheel  
L.—Pinion  
M.—Wheel from speedometer  
N.—Drive to propeller  
O.—Bearing. 1-8th in. brass tubing  
P.—Brass strip through which brass tubing is passed and soldered  
Q.—Standard. These keep the clock-works together

The alarm wheel K is the one that works the sort of ratchet that moves the alarm hammer. The wheel M need not be one from a speedometer. It must, however, be one that will mesh. The drive to propeller N, is a bicycle spoke, with the wheel M soldered to the end of it.



Here is the pattern of the propeller I promised. The heavy lines are the pattern. I have purposely left in the lines showing how I drew the pattern of the propeller. The edges of the propeller are sharpened and the blades bent to the shape shown in the smaller diagram. They are then twisted. The propeller is attached to the shaft, by soldering the propeller to the nipple of a bicycle spoke. The shaft is a bicycle spoke. This propeller is quite suitable for the clockwork drive as well as the electric motor, though perhaps on a somewhat smaller scale. It depends on the strength of the drive.

## For Your Entertainment:

### SUNDAY:

- 1YA: 5 p.m. Children's Song Service
- 2YA: 5 p.m. Children's Song Service, conducted by Uncle William, assisted by children from Karori Presbyterian Sunday School
- 3YA: 5 p.m. Children's Service, conducted by Rev. N. R. Wood, assisted by Colombo Street Baptist Sunday School Choir
- 4YA: 5 p.m. Big Brother Bill's Song Service

### MONDAY:

- 2YA: 5 p.m. Ebor talks on "Baba Yaga the Witch" ("Fairy Tales in Music" No. 1)
- 4YA: 5 p.m. Nature Night
- 3ZR: 5 p.m. Toyshop Tales

### TUESDAY:

- 1YA: 5 p.m. Talk by "Modelmaker"
- 2YA: 5 p.m. Mr. Swimming Man and programme from Mrs. Halligan's Studio
- 3YA: 5 p.m. Tiny Tots' Corner and Harmonica Band
- 4YA: 5 p.m. Mr. Swim Man
- 2YH: 5.30 p.m. David and Dawn and the Sea-Fairies
- 3ZR: 5 p.m. Robinson Crusoe
- 4YZ: 5.30 p.m. David and Dawn in Fairyland

## From the ZB Stations

"The Enchanted Orchard." All Stations at 5.15 p.m. on Mondays and Wednesdays

"The Air Adventures of Jimmy Allen." All Stations at 6.15 p.m. on Mondays, Wednesdays and Thursdays

"Gulliver's Travels." 1ZB Auckland and 2ZB Wellington at 6 p.m., May 5

### WEDNESDAY:

- 2YA: 5 p.m. Sunrays Programme
- 4YA: 5 p.m. Travel Man
- 3ZR: 5 p.m. Robinson Crusoe
- 4YZ: 5.30 p.m. Coral Cave

### THURSDAY:

- 2YA: 5 p.m. Games Night
- 4YA: 5 p.m. Mouth Organ Band and Mr. Stamp Man
- 2YH: 5.30 p.m. Coral Cave
- 3ZR: 5 p.m. David and Dawn in Fairyland
- 4YZ: 5.30 p.m. David and Dawn in Fairyland

### FRIDAY:

- 1YA: 5 p.m. David and Dawn in Fairyland
- 2YA: 5 p.m. Sea Talk by Andy Man
- 3ZR: 5 p.m. David and Dawn
- 4YZ: 5.30 p.m. Black Beauty

### SATURDAY:

- 2YA: 5 p.m. Mr. Nicholson's Maori Party from Levin
- 3YA: 5 p.m. While Children Sleep
- 4YA: 5 p.m. How to Make Session
- 2YH: 5.30 p.m. Westward Ho!



IT'S THE **IRIUM**  
IN **PEPSODENT**  
THAT GIVES YOUR TEETH  
*Dazzling Whiteness*

Do you want white and shining teeth—a smile that makes people look a second time? Then see today what Pepsodent Tooth Paste can do! Pepsodent brushes away unsightly surface stains, reveals the dazzling natural whiteness of your teeth. Pepsodent Tooth Paste is more effective because it contains IRIUM. Needs no grit, no soap, no pumice. Buy a tube of Pepsodent today, and get a "Come-Closer Smile" NOW!

AU739/218

**PEPSODENT TOOTH PASTE**

contains **IRIUM** for greater cleansing power  
Trial Size 6" — Large Size 1 1/3 — **BUY THE ECONOMY SIZE — 2 1/2**