

# 2XA WANGANUI

1200 kc. 250 m.

- 7. 0 a.m. Breakfast session
- 7.45 Weather Forecast
- 9. 0 Peter Youke and his Orchestra
- 9.15 Songs by Dinah Shore
- 9.30 Ivor Moreton and Dave Kaye (duo-pianists)
- 9.45 Anne Stewart's Home Decorating session
- 10. 0 Close down
- 6.30 p.m. Early Evening Music
- 6.45 "The Sparrows of London"
- 7. 0 Piano Playtime
- 7.15 Pelet Dawson Presents
- 7.30 Programme Review
- 7.45 Sports Results
- 7.45 At Short Notice
- 8. 0 Fred Waring and His Pennsylvanians
- 8.15 Standfast
- 8.45 Saturday Evening Serial: "Joe on the Trail"
- 9. 0 Weather Report
- 9. 4 Romance in Rhythm: Dance Music
- 9.30 Recent Releases
- 10. 0 Soft Lights and Sweet Music
- 10.30 Close down

# 2XN NELSON

1340 kc. 224 m.

- 7. 0 p.m. Listeners' Own session
- Local Sports Results
- 7.30 Listeners' Own session
- 9. 4 "Variety Bandbox" (BBC Programme)
- 9.32 Spanish Composers
- Boston Promenade Orchestra
- Three Cornered Hat, Dances
- 9.43 Arturo Benedetti Michelangeli (piano)
- Malaguena
- Albeniz
- Glady's Swarthout (soprano)
- Romanza De Solita
- El Majo Discreto
- Jeanne Gautier (violin)
- Danse Espagnole
- 9.53 Eileen Joyce (piano)
- Rapsodia Sinfonica
- Turina
- 10. 0 Close down

# 3YA CHRISTCHURCH

690 kc. 434 m.

- 6. 0, 7.0, 8.0 a.m. LONDON NEWS
- Breakfast session
- 9. 4 Melodies Beneath the Southern Cross
- 9.26 The All Girl Orchestra conducted by Phil Spitalny
- (Voice of America Programme)
- 9.40 Herbert Dawson (organ) and Paul Robeson (bass)
- 10.10 Short Story: "Frar Rabbit," by G. E. Spencer
- 10.30 Devotional Service
- 10.45 New Brighton Trotting Club: Commentaries throughout the day
- 11. 2 Berlin Philharmonic Orchestra
- 11.15 Latest Vocal Releases
- 11.30 Popular Melodies
- 12. 0 Lunch Music
- 1.30 p.m. Sports Summary
- 2. 0 Irish Mixture
- 2.15 Instrumental Interlude
- 2.30 Gems from Light Opera
- 3. 0 Saturday Matinee
- 3.45 Cowboy Songs
- 4. 0 Band Music
- 4.30 Sports Summary
- 5. 0 Children's Hour: "Coral Island" and "Through the Looking Glass"
- 5.45 Dinner Music
- 6.30 LONDON NEWS
- 6.40 National Announcements
- 6.45 BBC Newsreel
- 7. 0 Local News Service
- 7.30 EVENING PROGRAMME
- "Music for You": Popular Songs and Melodies by Coral Cummins and the Bob Bradford Trio
- (A Studio Presentation)
- 7.45 Anthony Galla-Rini (accordion)
- Overture: Morning, Noon and Night
- Soldiers' Chorus ("Faust")
- Suppe
- Waltz Dream Medley
- Gounod
- Marche Militaire
- Schubert
- 8. 0 "Great Expectations: The Benefactor"
- (BBC Programme)
- 8.30 Opera for the People: "Cavalleria Rusticana"
- 8.55 Station Notices
- 9. 0 Overseas and N.Z. News
- 9.15 Lookout: A N.Z. Commentary on the International News by John M. Fraser

# Saturday, December 10



MARIAN ANDERSON (contralto), who will be heard in "If Florian is Ever Faithful" (Scarlatti) at 9.12 this evening during the classical music session from 4YC

- 9.30 Picture Parade: "The Small Back Room" (BBC Programme)
- 10. 0 Sports Review
- 10.15 Famous Orchestras and Concert Artists
- 11. 0 LONDON NEWS
- 11.20 Close down

# 3YC CHRISTCHURCH

960 kc. 312 m.

- 5. 0 p.m. Tunes for the Teatable
- 6. 0 Concert Time
- 7. 0 Light and Bright
- 7.30 London Palladium Orchestra
- Merchant of Venice Suite
- Rosse
- 7.45 "Valley of Fear"
- 8. 0 Carol Concert by the Christchurch Harmonic Society with Choirs of the Christchurch Boys' High and Girls' High Schools, conducted by Victor C. Peters, O.B.E., and Clifton Cook
- (From the Civic Theatre)
- 10. 0 Humour and Harmony
- 10.30 Close down

# 3XC TIMARU

1160 kc. 258 m.

- 7. 0 a.m. Breakfast session
- 9. 0 Man About Town
- 9.15 Hits and Catches
- 9.30 Country Mail Bag
- 9.45 Home Decorating session (Anne Stewart)
- 10. 0 Close down
- 6.30 p.m. Music in the Air
- 7. 0 "The Blue Danube"
- 7.30 Programme Review
- Sports Results
- 7.45 JOYCE WRIGHT (soprano)
- Polly Willis
- She Is Far From the Land
- Arne
- Road to the Isles
- Lambert
- Deldre's Farewell
- Kennedy-Fraser
- The Rising of the Lark
- Trad.
- (A Studio Recital)
- 8. 0 Gems from the Operas
- Spotlight: Morton Gould
- 8.45 "Strange Mysteries"
- 9. 0 Dominion Weather Report
- 9. 4 Music in the Tanner Manner
- 9.35 "Variety Bandbox" (BBC Programme)
- 10. 5 Reflections
- 10.30 Close down

# 3YZ GREYMOUTH

920 kc. 326 m.

- 7. 0, 8.0 a.m. LONDON NEWS
- Breakfast Session
- 9. 4 You Ask, We Play
- 12. 0 Announcements
- Lunch Music
- 2. 0 p.m. First Sports Summary
- Saturday Matinee

- 4.45 Second Sports Summary
- 4. 0 Children's Session: Radio Circle
- 5.45 Songs by Evelyn Knight
- 6. 0 "Regency Buck"
- 6.15 Late Sporting Information
- 6.30 LONDON NEWS
- 7. 0 Station Announcements
- Third Sports Summary
- 7.30 Saturday Serenade
- 8. 0 "Front Page Lady"
- 8.30 "Variety Bandbox" (BBC Programme)
- 9. 0 Overseas and N.Z. News
- 9.15 Lookout: A N.Z. Commentary on the International News by John M. Fraser
- 9.30 "It's a Date"
- 10. 0 Final Sports Summary
- Kay Kyser and his Orchestra
- 10.30 Close down

# 4YA DUNEDIN

780 kc. 384 m.

- 6. 0, 7.0, 8.0 a.m. LONDON NEWS
- Breakfast session
- 9. 4 Tunes of the Times
- 9.15 Tenor Time
- 9.30 Music While You Work
- 10. 0 Music for All
- 10.20 Devotional Service
- 10.38 For My Lady
- 11. 0 Piano Time
- 11.15 Songs of the Islands
- 11.30 Variety
- 12. 0 Sports Announcements
- 12. 5 p.m. Lunch Music
- 1. 0 Sports Announcements
- 2. 1 Saturday Matinee
- 2.15 Sports Summary
- 4.45 Sports Summary
- 5. 0 Children's Hour
- 5.45 Dinner Music
- 6.15 Sports Results
- 6.30 LONDON NEWS
- 6.45 BBC Newsreel
- 7. 0 Local Sports Results
- 7.30 EVENING PROGRAMME
- JOAN COXON (English soprano)
- English Songs:
- The Cloths of Heaven
- Dunhill
- Lullaby
- Scott
- The Colour
- Is Fleming
- Sheep Shearing
- Trad.
- Irish Folk Songs:
- Down by the Sally Gardens
- She Moved through the Fair
- The Ballinure Ballad
- arr. Hughes
- (A Studio Recital)
- 7.45 "Much-Binding-in-the-Marsh" (BBC Production)
- 8.15 "The Novelettes," compered by Stan Mee
- (From the Studio)
- 8.30 "Fun 'n Games," an Impromptu concert in the New Settlers' Hostel Hall at St. Kilda, with guest artists Roi Don (piano) and Shirley Le Gal (soprano)
- 9. 0 Overseas and N.Z. News
- 9.15 "Lookout": A N.Z. Commentary on the International News by John M. Fraser
- 9.30 Dance Music
- 10. 0 Sports Summary
- 10.10 Dance Music
- 11. 0 LONDON NEWS
- 11.20 Close down

# 4YC DUNEDIN

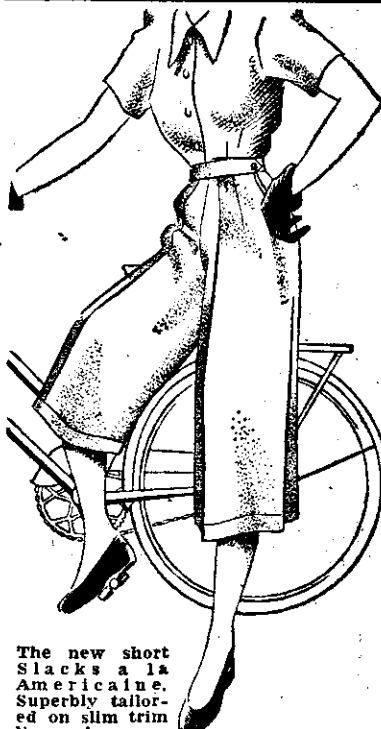
900 kc. 333 m.

- 5. 0 p.m. Saturday Proms
- 5.45 The Allen Roth Show
- 6. 0 Dance Music
- 6.30 Light Orchestras and Ballads
- 7. 0 Popular Parade
- 7.30 Four King Sisters
- 7.45 Harmony and Humour
- 8.15 Waltz Festival Orchestra
- 8.30 "Crowns of England"
- 9. 0 Classical Music
- Alfredo Campoli (violin) and Eric Gritton (piano)
- Sonata in G Minor
- Tartini
- 9.12 "If Florian is Ever Faithful" Scarlatti
- 9.16 London Symphony Orchestra conducted by Felix Weingartner
- Concerto Grosso in D, Op. 6, No. 5
- Handel
- 9.30 London Studio Concerts
- Westminster Orchestra
- March, Introduction and Final Dance
- (Light Music Suite)
- Benjamin
- Ballet Suite: The Triumph of Neptune
- Berners
- (BBC Programme)
- 10. 0 Music by Verdi
- 10.30 Close down

# 4YZ INVERCARGILL

720 kc. 416 m.

- 7. 0, 8.0 a.m. LONDON NEWS
- Breakfast session
- 9. 3 The Smoky Dawson Show
- 9.20 Variety Roundup
- 10. 0 Devotional Service
- 10.15 In Quiet Mood
- 10.30 The Humphrey Bishop Show
- 11. 0 "Bundles"
- 11.25 Piano Parade
- 11.40 Songs for Sale
- 12. 0 Lunch Music
- 2. 5 p.m. The Silvester Programme
- 2.30 Racing Summary
- 2.35 Album of Memories
- 3. 5 Footlight Parade
- 3.35 Music for All
- 4. 5 The Floor Show
- 4.45 Racing Summary
- 5. 0 Children's Hour: The Quiz
- 5.30 Music for the Tea Hour
- 6.25 Race Results
- 6.30 LONDON NEWS
- 6.40 National Announcements
- 6.45 BBC Newsreel
- 7. 0 Sports Results
- 7.30 Sweet Serenade (BBC Programme)
- 8. 0 The Maestro from Pennsylvania: Fred Waring
- 8.30 "Mr. and Mrs. North"
- 9. 0 Overseas and N.Z. News
- 9.15 Lookout: A N.Z. Commentary on the International News, by John M. Fraser
- 9.30 Music Hath Charms
- 9.36 HELEN GALT (soprano) (From the Studio)
- 10.15 District Sports Summary
- 10.30 Close down



The new short Slacks a la Americaine. Superbly tailored on slim trim lines, in your size and the shade you like best. Slide-fastened, side-pocketed.

On show at the best shops.

# Pedal Pushers

BY

# Karoy

(REGD.)

Smartwear Ltd., Box 649, Christchurch. (Wholesale only).