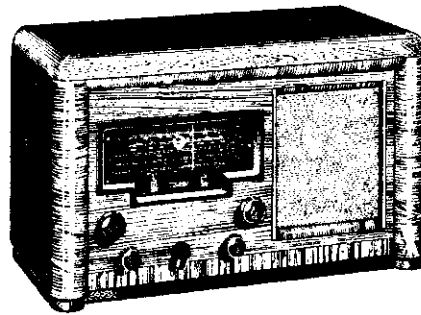
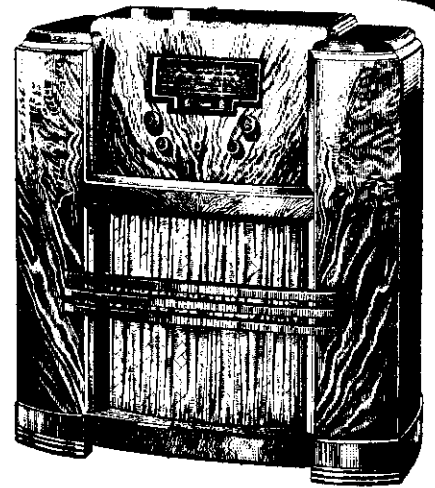


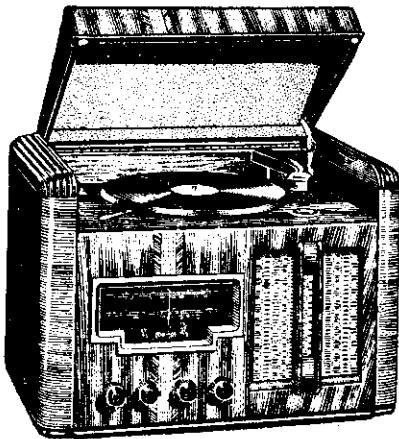
COLUMBUS MODEL "FLOTILLA" (left), £134. New Zealand's finest Radio-Gramophone, available as a 7 or 13-valve Radio-Gramophone combination. The Gramophone unit is an automatic change design.



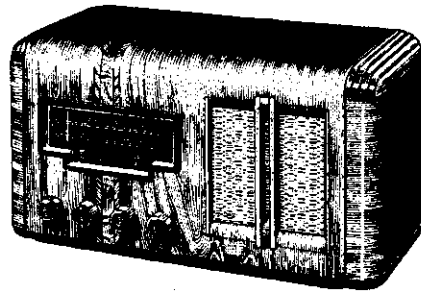
MODEL 90 "ENDEAVOUR"—In all ways the perfect radio. £49/10/-. Height, 14½in.; Width, 24in.; Depth, 11½in.



MODEL 90 "SQUADRON," £74. A console model of faultlessly immaculate appearance and possessing the highest attributes of range, tone and selective capacity.

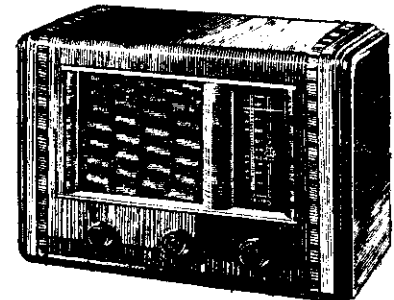


MODEL 66 "PENNANT," £59/10/-. Radio-Gramophone, 6-valve. Spread shortwave bands and a gramophone unit of unassailable quality.

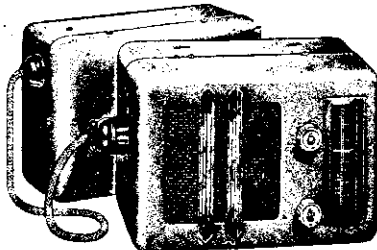


MODEL 27 "EXETER" 5-valve, Dualwave, £31/10/-.

MODEL 32 "EXETER" 6-valve, Broadcast, £34. Height, 11in.; Width, 21in.; Depth, 9½in.



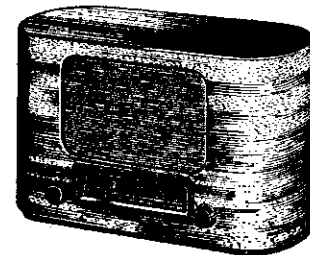
MODEL 53 "CORVETTE," £26 (Broadcast). Height, 12½in.; Width, 18½in.; Depth, 9in.



COLUMBUS AUTO RADIO MC7, £35. For all makes of cars. Demonstration arranged on request



MODEL 402 POWER PLUG-PORTABLE, 6-valve, AC/Battery Dual Purpose Portable, £36, including batteries.



MODEL 14 "GAINSBOROUGH," £22, 5-valve Quality Broadcast Miniature. Height, 8½in.; Width, 14in.; Depth, 7in.



NEW ZEALANDS

Greatest Radio Family

COLUMBUS
RADIO

The Radios illustrated on this page are some of the magnificent range available at any Columbus Radio Centre. Battery models of similar characteristics and identical appearance are readily available.

UNCONDITIONALLY GUARANTEED

EVERY COLUMBUS RADIO IS UNCONDITIONALLY GUARANTEED FOR 12 MONTHS AFTER SALE.

ON SALE THROUGHOUT N.Z.

Product of Radio Corporation of New Zealand Ltd.