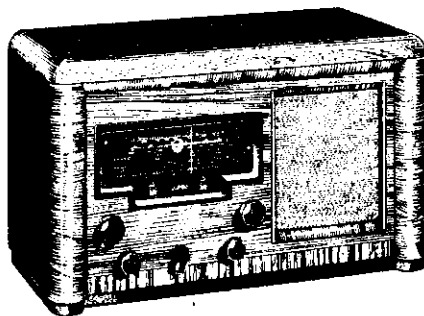
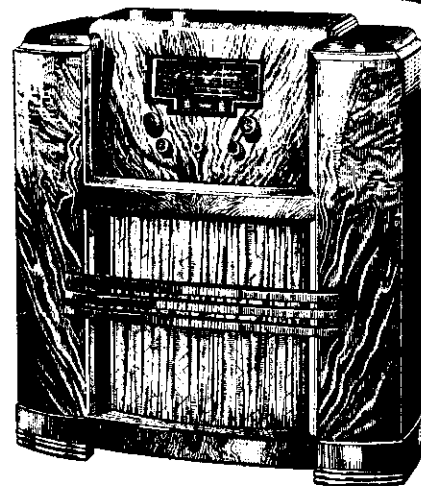


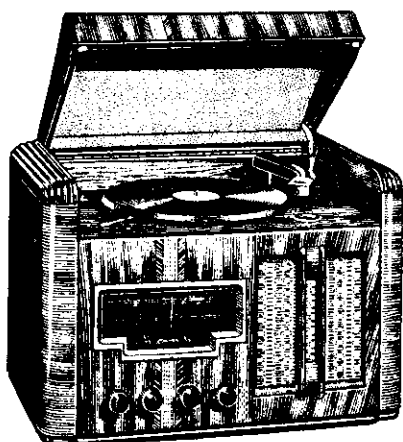
COLUMBUS MODEL "FLOTILLA" (left), £134. New Zealand's finest Radio-Gramophone, available as a 7 or 13-valve Radio-Gramophone combination. The Gramophone unit is an automatic change design.



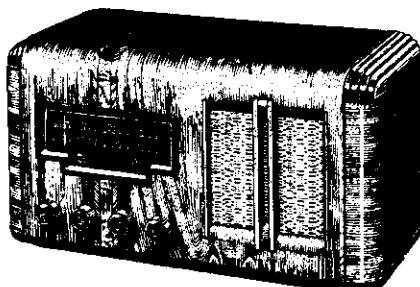
MODEL 90 "ENDEAVOUR"—In all ways the perfect radio. £49/10/-. Height, 14½in.; Width, 24in.; Depth, 11½in.



MODEL 90 "SQUADRON," £74. A console model of faultlessly immaculate appearance and possessing the highest attributes of range, tone and selective capacity.

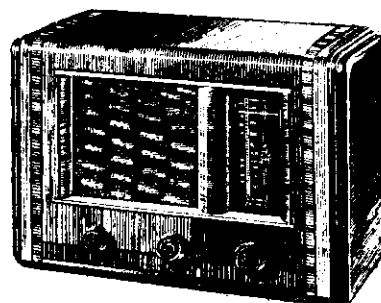


MODEL 66 "PENNANT," £59/10/-. Radio-Gramophone, 6-valve. Spread shortwave bands and a gramophone unit of unassailable quality.

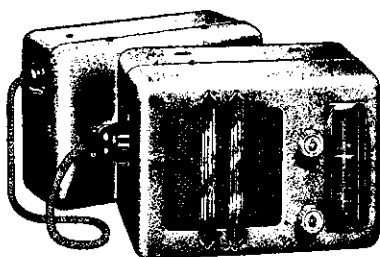


MODEL 27 "EXETER" 5-valve, Dualwave, £31/10/-.

MODEL 32 "EXETER" 6-valve, Broadcast, £34. Height, 11in.; Width, 21in.; Depth, 9½in.



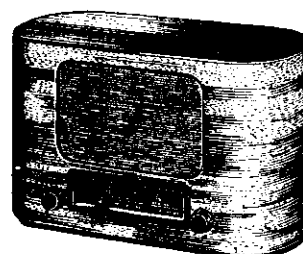
MODEL 53 "CORVETTE," £26 (Broadcast). Height, 12½in.; Width, 18½in.; Depth, 9in.



COLUMBUS AUTO RADIO MC7, £35. For all makes of cars. Demonstration arranged on request



MODEL 402 POWER PLUG-PORTABLE, 6-valve, AC/Battery Dual Purpose. Portable, £36, including batteries.



MODEL 14 "GAINSBOROUGH," £22, 5-valve Quality Broadcast Miniature. Height, 8½in.; Width, 14in.; Depth, 7in.



NEW ZEALANDS

Greatest Radio Family

**COLUMBUS
RADIO**

The Radios illustrated on this page are some of the magnificent range available at any Columbus Radio Centre. Battery models of similar characteristics and identical appearance are readily available.

**UNCONDITIONALLY
GUARANTEED**

EVERY COLUMBUS RADIO IS
UNCONDITIONALLY GUARANTEED
FOR 12 MONTHS AFTER SALE.

**ON SALE
THROUGHOUT N.Z.**

Product of Radio Corporation of New Zealand Ltd.