

The nose imperious
always asks for ...

PYRAMID

Trade Mark

HANDKERCHIEFS

In white and coloured for men and women

A TOOTAL PRODUCT

See Registered Trade Mark Label
on every handkerchief



TOOTAL GUARANTEED



For the perfect lather..

SOFT, SOOTHING, STIMULATING!

Use Wright's
Coal Tar Shaving
Soap for a perfect
creamy antiseptic
lather.

WRIGHT'S
Coal Tar
SHAVING SOAP

ALSO SHAMPOO POWDER & LIQUID SHAMPOO

N.Z. AGENTS S. A. SMITH & CO. LTD. ALBERT ST., AUCKLAND

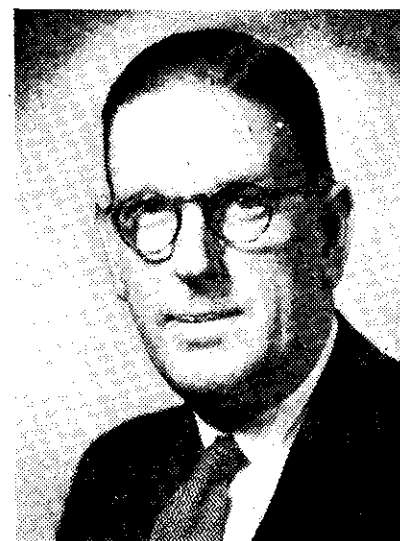


First Night at Wanganui

GOOD reception in coastal towns from Hawera in the north to Wellington in the south can be expected from 2XA Wanganui, the new two-kilowatt station of the NZBS which will be officially opened by the Hon. F. Jones, Minister in Charge of Broadcasting, at 8.0 p.m. on Saturday, October 22. Other towns in a position to receive 2XA's transmission signals from across the sea rather than over land barriers should also get good reception. This applies particularly to Nelson, Motueka and Hawera. From preliminary reports it seems that Taihape may also get worthwhile reception from the Wanganui station.

Station 2XA is the latest of a series of small stations of the "radio community centre" type which were planned many years ago, but delayed in their establishment by the war. It is also the first of them to have incorporated in its studios a stage and auditorium for audience participation. It is now likely that power will be increased to two kilowatts at the New Plymouth station 2XP towards the end of the year, while the projected station at Masterton may be ready for opening in about a year's time.

The manager of 2XA is Eric Lawrence, formerly of the NZBS Commercial Division's Head Office in Wellington. He was once a radio operator in the mercantile marine, and has had 12 years' experience of broadcasting. The



ERIC LAWRENCE, who has been appointed station manager of 2XA Wanganui

hours of transmission of the new Wanganui station will be the same as for the other "X" stations, i.e., from 7.0 a.m. to 10.0 a.m., and from 6.30 p.m. to 10.30 p.m. on weekdays and Saturdays, and from 8.0 a.m. to 11.0 a.m. and 6.30 p.m. to 10.30 p.m. on Sundays. The first four hours of transmission from Mondays to Saturdays will be devoted to Commercial programmes, while the remaining hours will be non-commercial.

Following the official opening on Saturday, October 22, a musical programme featuring local artists will be presented until 10.0 p.m., after which a new programme in the popular BBC series *Variety Bandbox* will be broadcast.

"THE LISTENER" CROSSWORD

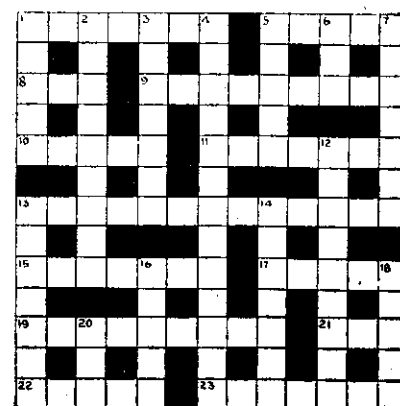
(Solution to No. 464)

S	O	N	A	T	A	G	A	N	D	E	R
A	R	R	E	E							A
V	A	C	C	O	U	T	R	E	D		T
O	A	T	H	U	O	D	A	S	H		
I	R	S	N	I	F	F	R	E			
R	O	O	T	E	D	F	A	T	T	E	R
	C	V				I	M				
S	N	I	V	E	L	C	R	E	O	L	E
A	O	R	A	T	H	E	U	T			
I	R	U	N	C	A	I	T	C	H		
L	S	A	C	K	C	L	O	T	H		
O	M	E	E	E							
R	E	M	E	D	Y	T	E	M	P	T	S

Clues Down

- The bosses in Hades?
- Predatory.
- "One — hour of glorious life
Is worth an age without a name."
- The end of a photograph in topical surroundings.
- A race for the p...
- Half sister.
- Diaphragm.
- Flooded.
- Pug.
- Less gin (anag.)
- A feathered fier, but no bird.
- Re'ay in order to be in plenty of time.
- See 21 across.

No. 465 (Constructed by R.W.C.)



Clues Across

- Edible form of chariot.
- Maud's manner of saying "I'm here."
- Poisonous part of a clasp.
- Downtrodden.
- Sharp words?
- Italian poet (1537-1612).
- Bennis 'mid bluff—it's all in the game.
- Heal with sun?
- Push.
- I act liars (anag.)
- With 20 down this sailor provides a Scottish cloth.
- Renovate.
- Day of Judgment.