

minced. 2 tablespoons butter. 4 potatoes pared and chopped, 3 cups water, 1 teaspoon salt, 3 cups hot milk. Put leeks and onion in saucepan with 1 tablespoon butter. Cover and cook slowly a few minutes until soft, but do not allow them to brown. Add potatoes, water and salt. Bring to boil and cook slowly 30 to 35 minutes or until potatoes very soft. Strain through fine sieve. Return strained puree to pan, bring to boil and add milk and remaining tablespoon of butter. Correct the seasoning. Serve with croutons if desired. For a richer soup, mix 2 egg yolks with 1/2 cup cream and combine with the hot soup. Bring to boil, but do not allow to boil after adding egg yolks.

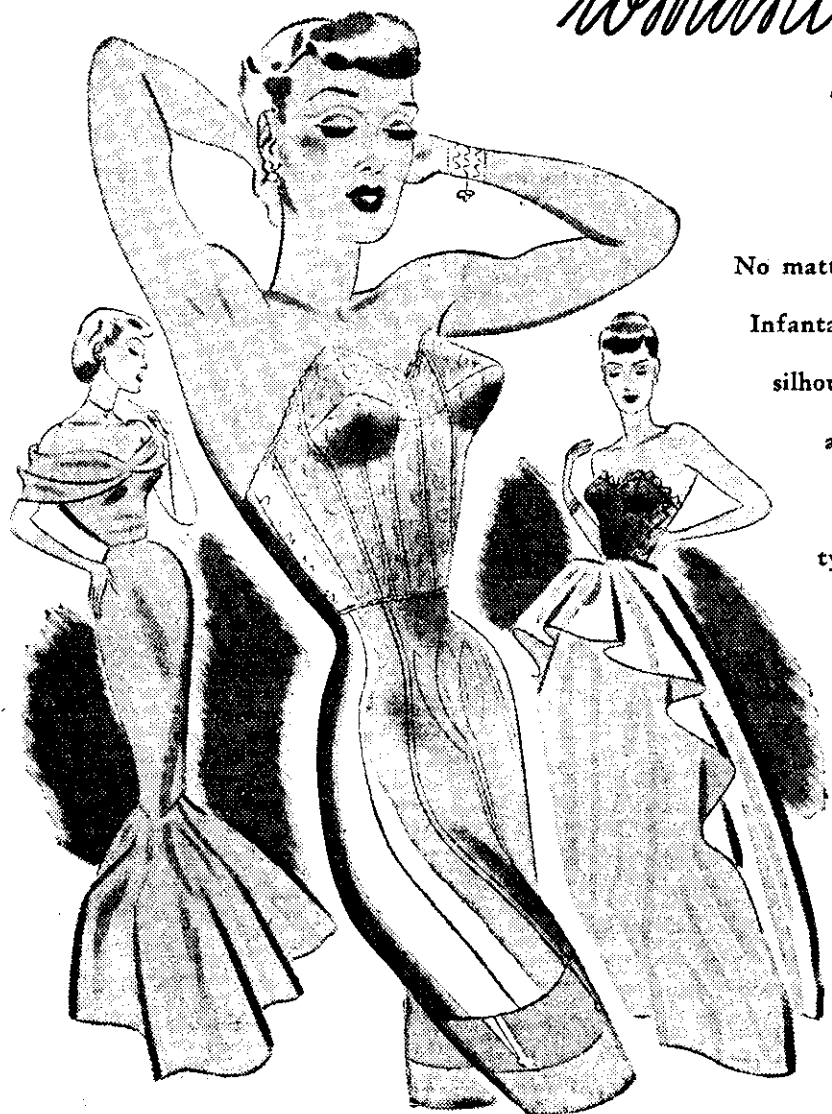
PUMPKIN SOUP: Two cups pumpkin, pared and cut in dice, 2 cups water, 1 tablespoon sugar, 2 tablespoons butter, 1/2 teaspoon salt, 3 cups milk. Put pumpkin, water, 1 tablespoon butter, sugar, and salt in saucepan, bring to boil and cook 15 minutes or until pumpkin is soft. Rub through a sieve, add milk, and bring back to boil. Correct the seasoning and add remaining tablespoon of butter. Thicken if desired.

BEEF SAUTE LYONNAISE: One cup leftover boiled (or roast) beef cut in small thin slices, 1 onion sliced, 2 tablespoons butter, 2 tablespoons vinegar, salt and pepper, 1 cup sliced potatoes sauteed, 1 teaspoon chopped parsley. Melt butter in frying pan and saute meat quickly in it until pieces are a little brown on both sides. Melt other tablespoon of butter in another pan and saute onion in it until golden. Mix together beef, onion, vinegar, and season with salt and pepper. Then add potatoes, toss all together lightly, and serve sprinkled with chopped parsley on top.
"Elizabeth," Christchurch.

Quilted Satin
Dear Aunt Daisy,
 Some time ago, you told how someone had been troubled by the stain from cotton wadding in a quilted satin pram cover when it was washed. As I had the same experience, I made up my mind that in future I would make my own pram cover and try an idea which occurred to me. I have just finished a pram set for my new baby and am delighted with the result. I did not use cotton wool to line the quilt, but surgical gauze, just placed in layers and then quilted under the satin. It looks exactly the same as my other bought set and I'll be able to launder this one without any fears.
"I.B.H.," Christchurch.
 Another suggestion which came in was to use tailors' wadding.

Half-a-MINute with Min.
 There are a host of cleaning and polishing jobs you can do better with MIN Furniture Cream. A little MIN applied with a cloth quickly removes finger marks and grime from doors and cupboards. Ideal for enamelled surfaces and paintwork, and of course the finest treatment for highly polished surfaces such as Pianos, Radios, etc.
 Half-a-MINute with MIN makes a marvellous difference. Save money, too, because MIN to-day sells at the attractive price of 1/7½. MIN is sold in a very convenient, distinctive red tin. Ask your Grocer.


Berlei prepares romantic lines for evening



No matter what the skirtline, siren-slim or Infanta-full, the bodyline of the romantic silhouette is closely sheathed. It calls for a Berlei's sheath-control. Berlei has the secret of infallible figure-type fitting, reduced to the magic formula of the Berlei Type Indicator, so that your own corsetiere can readily find the Berlei to bring your figure to a standard of perfection that lets you wear the romantic fashions 'as to your figure born.'

Illustrated: Skintex high-waisted stepin; Berlei Sta-in-place strapless bra.

New fashions need new Berleis



Berlei

TRUE-TO-TYPE FOUNDATIONS

8 FIGURE TYPES AND THEIR 13 VARIATIONS