

(continued from previous page)

From 1930 to 1938 he was associated with the Wellington Community Singers whose leaders sometimes took their entertainment to places outside the Capital.

When he accepted an appointment as official accompanist at 2YA in 1934, his many years as an all-round musician helped him a lot, and he needed that help.

"Besides accompanying difficult classical songs and instrumental solos, I had to play for tin-whistlers, monologists, and various other novelty performers," he said. "I remember an uneasy moment when a flautist from Auckland produced an instrument that was half a tone above the pitch of the studio piano, and I had to transpose the piano part immediately for a flute and pianoforte sonata."

Accompanists see many sides of human nature—the artists who are graciousness itself and the others who are difficult for the sake of effect. Who, asked *The Listener*, had he enjoyed playing for most?

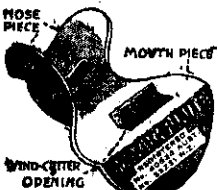
"I have found the best artists co-operative and a pleasure to work with," said Mr. Crowther. "I remember specially the Australian mezzo-soprano Dorothy Helmrich who, on her first tour of the New Zealand radio stations, gave magnificent performances of 'The Erl King' and 'Lord Randall.' Then there were Stella Power, Coloratura soprano, the baritone de Vries, New Zealand's Alan Loveday and Zelanda—all first-class performers—and on the lighter side, Carrie Moore, the musical comedy star, and the late Fred Bluett."

A highlight of his broadcasting experience was his conductorship of the NBS String Orchestra on the resignation of Maurice Clare, and his most recent musical undertaking of importance was the training of the chorus and minor principals for the Wellington production of *Carmen* last year. Now in his 69th year, Mr. Crowther intends shortly to retire.

#### Previews by Mark Nicholls

THIS Saturday, July 23, at 9.15 p.m., and on Wednesday, July 27, at 8.30 p.m., the previews by Mark Nicholls of the All Black matches in South Africa, which generally originate from 2ZB, will come from 3ZB. Nicholls will then be in the South Island, coaching the Buller Rugby team for its Ranfurly Shield challenge match against Otago at Carisbrook on Saturday, July 30. On July 30, the All Black preview will come from 4ZB at 9.15 p.m. Listeners to 2ZA will hear the previews at 9.45 p.m.

### The MAGIC FLUTE

Price (with instructions for playing)		Price (with instructions for playing)
2/6		2/6
(3/- Post Free)		(3/- Post Free)

The MAGIC FLUTE must not be confounded with the cheap toys which merely disguise the Voice. Its Musical range is over two octaves and anyone with five minutes' practice can play any Melody ever written.

#### ALL MUSIC SELLERS

Or Direct from the Manufacturers—  
J. ALBERT & SON PTY. LTD.,  
2-4 Willis Street, Wellington.

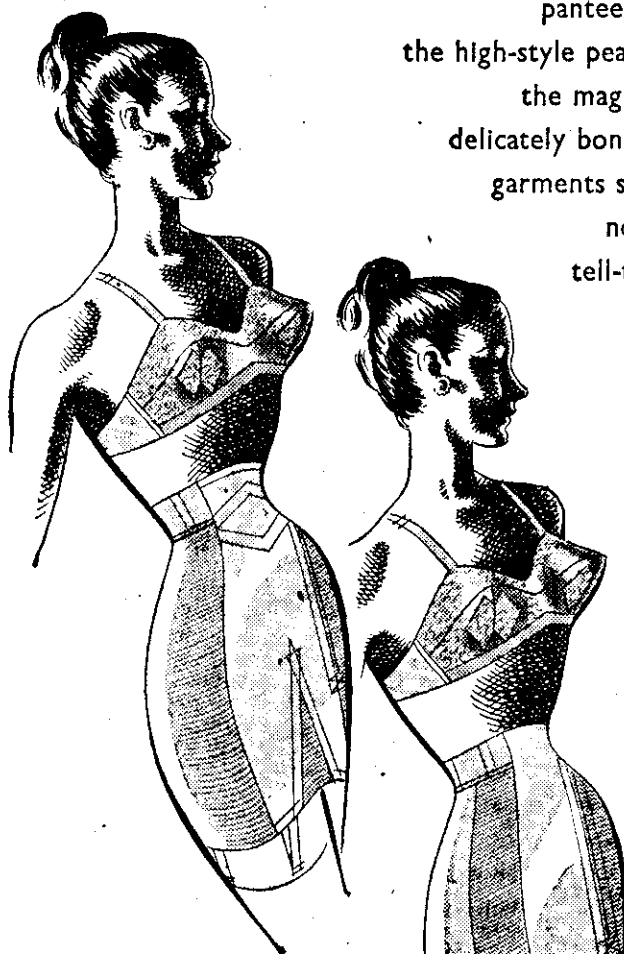
Trade Supplied. Ask for Quotations.

N.Z. LISTENER, JULY 22, 1949.

# WAISTLINE WIZARDRY

## Le Gant STA-UP-TOP

Two new basic beauties by Le Gant . . . a glamour pantee; a high-waist girdle . . . to show you the high-style peak of foundation perfection. Each has the magic Le Gant Sta-up-top; the shaped and delicately boned waist-band that makes these lovely garments sit pretty and never move. No gaping, no rolling over, no riding or sliding, no tell-tale line. It's the snug, sweet answer for all who wear waistline garments. See these Le Gant creations now. They're gorgeous things really.



#### THE PANTEE

Moulding and controlling, yet the most heavenly comfortable Pantee you've ever worn. The secret? Just the Sta-up-top and the exquisite Le Gant fashioning. In nylon, elastic satin and lastretch. Open or closed crotch. At the smartest stores.

#### THE CORSET

Prettiest waist whittler, in nylon, stretching satin and lastretch panels. Three invisible front bones for a flat tummy and of course the magic Sta-up-top to make the high waist fit perfect and permanent.

WARNERS U.S.A.

**Le Gant**  
PRONOUNCED LE GONG  
**STA-UP-TOP**  
DON'T ROLL OVER - DON'T RIDE UP

ANOTHER MODAIRE FEATURE FOUNDATION