

NEW ZEALAND LISTENER

Incorporating N.Z. RADIO RECORD

Every Friday Price Threepence

EDITORIAL AND BUSINESS OFFICES:
115 Lambton Quay, Wellington, C.1.
Box 1707, G.P.O.
Telephone No. 41-470.
Telegraphic Address: "Listener," Wellington.

JUNE 24, 1949

CONTENTS	Page
Things to Come - - -	4
Editorial - - -	5
Letters from Listeners -	5
Ten Over-crowded Years -	6-7
Hamilton Comes on the Air	8-9
Auckland String Players -	8
Radio Viewsreel - - -	10-11
Ballroom Dancing - - -	10
Crossword Puzzle - - -	11
Todd Duncan: Gershwin Wrote for Him - - -	12-13
Gilbert Vinter: Professor of Bassoon - - -	13
Book Reviews - - -	15-16-17
Educationists Talk Things Over - - -	18-19
Bullets in the Ballet -	19
Film Reviews - - -	20-21
Ask Aunt Daisy - - -	22-23
Cover Girl Grows Up -	24
People in the Programmes -	25
Know Your Classics - -	26

BROADCAST PROGRAMMES
Mon. to Sun., June 27-July 3 27-47

SUBSCRIPTIONS

OVERSEAS. — Twelve months (including postage), Great Britain and British Countries, 17/6; Foreign Countries (including U.S.A.), 20/-.

WITHIN N.Z. (Special Rates). — If paid in advance at any Money Order Post Office: Twelve months, 12/-; six months, 6/-; three months, 3/-.

RENEWALS. — Two weeks' notice of renewal is required.

CHANGE OF ADDRESS. — Two weeks' notice required. Please give both the new and the old address.

ADVERTISING RATES

Terms on application to the Advertising Manager, "New Zealand Listener," Box 1707, G.P.O., Wellington, N.Z.

Forget CORNS

INSTANT RELIEF

Dr. Scholl's Zino-pads instantly stop tormenting shoe friction, lift painful, nerve-rasping pressure—keep you foot-happy! Separate Medications supplied for quickly removing corns. 1/8 a packet. At Dr. Scholl's dealers and chemists. Sizes also for Callouses, Bunions and soft Corns.

Dr. Scholl's Shops:

9 Willis Street, Wellington.	167 Bridge Street, Nelson.
291 High Street, Lower Hutt.	123 Cashel Street, Christchurch.
192 Victoria Ave., Wanganui.	Cr. George & Sophia Streets, Timaru.
136 Broadway, Palm. North.	20 Moray Place, Dunedin.

Dr. Scholl's Zino-pads

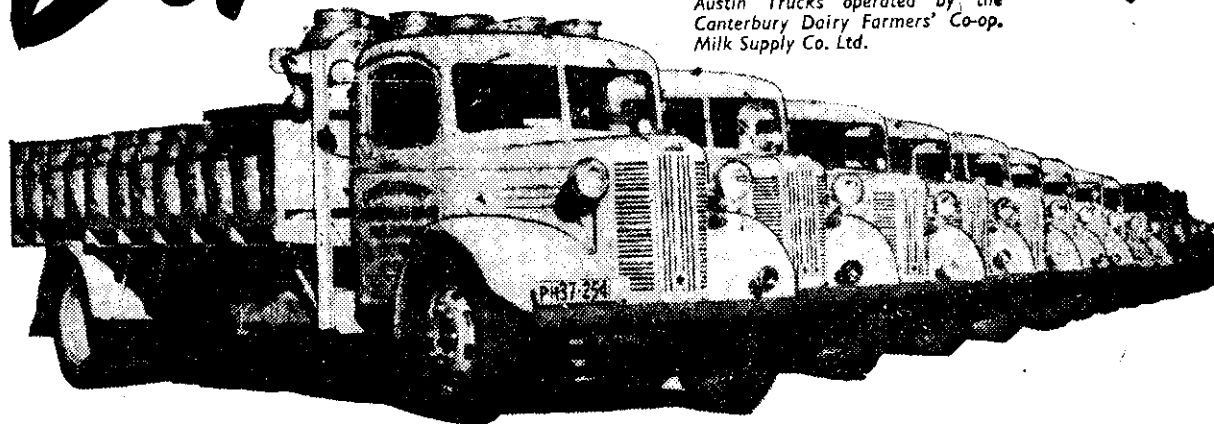
Scholl Mfg. Co. (N.Z.) Ltd., Willeston St., Wellington.

NEW ZEALAND LISTENER, JUNE 24

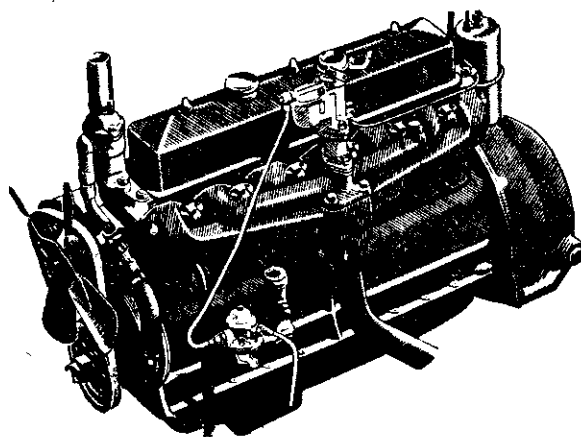
BOUGHT FOR THEIR

Power and Dependability

★ Actual photograph of 13 heavy duty Austin Trucks operated by the Canterbury Dairy Farmers' Co-op. Milk Supply Co. Ltd.



Many large transport firms are changing to Austin Trucks—here's why!



1. Tests prove that the larger 4-litre truck engine gives greatly increased power and torque.

2. Scientific designing distributes weight evenly over all four wheels—means full capacity loads can be carried at the lowest cost per ton-mile.

3. Austin's superior engineering gives you life-long Dependability, the barest minimum in upkeep and maintenance, and fuel economy which continues to surprise even the most experienced truck operators.

It will pay you to get full details now from your nearest Austin Distributor.

— You can Depend on them!

AUSTIN 2-3-5 TON TRUCKS

Distributors for AUSTIN CARS, VANS, TRUCKS and BUSES:

Auckland: Seabrook Fowlds Ltd. Hawke's Bay: Anderson and Hansen Ltd. Wellington: Magnus Motors Ltd.
Taranaki: The Farmers' Co-op. Orgn. Society of N.Z. Ltd. Canterbury & Westland: David Crozier Ltd.
Otago: Austin Motors (Otago) Ltd. Southland: P. H. Vickery Ltd.