

POWERFUL NEW STATION

Rotorua's 1YZ Will Open Next Month

STATION 1YZ, the new Rotorua station which is to start operating next month, will be, apart from 1YA Auckland, the most powerful broadcasting station north of Taupo. Its opening on Wednesday, April 27, which was announced last week by the Minister of Broadcasting, will complete a Dominion-wide link of "coverage" or YZ stations, the others already in operation being 2YZ Napier, 3YZ Grey-mouth, and 4YZ Invercargill. Station 1YZ is expected to give first-class reception to listeners throughout the Bay of Plenty area.

Local residents are already familiar with the big 500-foot steel mast which has been erected near the sea coast at Paengaroa to radiate 1YZ's programmes, and it has become an accepted feature of the Bay of Plenty landscape. The 10-kilowatt transmitter is housed alongside the mast in a building constructed from materials originally used for war purposes. The studios of 1YZ will be housed in a long wooden building, also built from second-hand timber, opposite the Municipal Buildings in Arawa Street, Rotorua. The building is only a temporary affair and a larger permanent structure will probably be erected when building materials become more plentiful. The temporary studio and transmitter buildings have been sited in such a way that the permanent buildings can be erected as soon as the necessary permits have been obtained, without any interruption of the activities of the station.

Provision is made in the present unit for two studios, one for the artists and the other for the announcer. They are separated by the control room, which is enclosed in sound-proof windows. The station will have its own record library and adequate office accommodation. The studio is connected by 25 miles of land-line to the transmitter, and housing accommodation is being provided for the station's permanent staff. The name of 1YZ's first station manager has just been announced. He is K. G. Collins, a senior officer of the NZBS at present stationed in Wellington.

(continued from previous page)

it continued to watch us. Evidently the cavity was only deep enough to hide the cubs, not to hold the mother. Later when there were two cubs we visited again, and then she would run from the earth and lie a few yards off watching, but we never saw again the cub or the later addition which completed the family. What would have happened if we had broken the Park rule of "never get out of your car" and tried to get a close view of the tiny pup we believed the first of the litter? A writer on the hyena says that wild life of Africa owes much to the hyena's own ignorance of the strength of its jaws—which are in fact stronger than any other beast's of the same size. Would maternal affection have brought this strength into play? We were law-abiding and did not find out, but we became hyena fans from that day—we had seen the best of them.

The programmes broadcast by 1YZ will be similar to those heard from 2YZ, 3YZ, and 4YZ. Although the station will be on the air for over 15 hours a day, the consumption of electricity by the NZBS generally will not be increased, as an equivalent saving will be made by operating other stations in the North Island with diesel plant. It is intended later to make arrangements for 1YZ's programmes to include broadcasts from Tauranga, in a similar way to the proposed interrelation of Hastings and Napier in the use of 2YZ.

Other Expansion Projects

Altogether, seven other new stations are at present under construction as part of the NZBS's post-war expansion policy. At Wanganui a contract has been let to alter part of Earles Buildings to accommodate a studio for a new two-kilowatt station, whose opening date depends simply on the progress made by the contractor. The self-supporting mast being erected on the car-park area by the State Hydro-Electric Department is almost ready, and NZBS technicians are now engaged in installing the transmitter in the Garrison Hall.

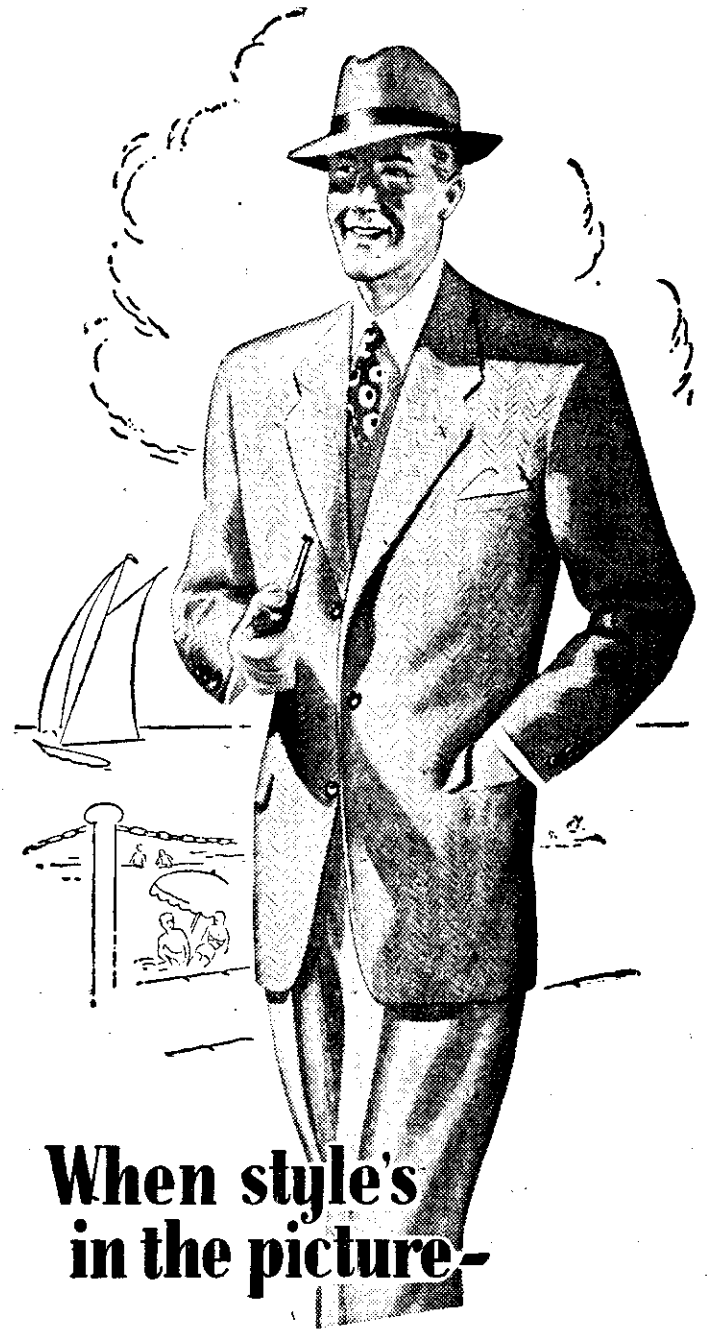
At Palmerston North the building to house the unattended transmitter for a new two-kilowatt station is being completed, and a concrete base for the mast is being prepared. In Hamilton the studios for a new station have been completed, and as soon as the technicians finish at Wanganui they will go ahead at Hamilton with work on the unattended two-kilowatt transmitter to be set up in a building on the Morrinsville Road just past the Rotorua turn-off.

Studios for a new station at Whangarei are completed, and a contract has been called for the erection of a building to house the unattended transmitter at a site near Kamo. At Gisborne work is proceeding on alterations to the Majestic Theatre building to provide up-to-date studio facilities. The NZBS hopes to start erecting a transmitter building on a site near Wainui in the near future. Arrangements are also being made for contractors to pour the concrete for a mast base and anchor guides.

Improvements for Nelson

At Nelson some of the transmitter equipment has been installed for the new two-kilowatt station, and planning of renovations to the studios in Trafalgar Street is now being undertaken. At New Plymouth arrangements are not so far advanced, but a building has been bought by the NZBS from surplus military supplies at the Bell Block aerodrome. It will be shifted and re-erected at the transmitter site on the coast between New Plymouth and Waitara. Space for studio premises has been acquired in the N.Z. Insurance Company building, and when the Nelson plans have been completed the NZBS draughting staff will draw up plans for the New Plymouth studios.

Steel masts for all of these two-kilowatt stations are now ready in Australia, and shipping space has been reserved for them to be brought to New Zealand shortly. The masts include one to replace the temporary aerial now in use at Timaru.



Manufactured by J. A. Wilkinson & Son Ltd., Commerce Street, Frankton.

1W2