

### Blackberry Chutney

One pound of sliced cooking apples; 6 medium-sized chopped onions; 3lb. blackberries; 3oz. salt; 1oz. mustard; 1oz. ground ginger; 1 teaspoon powdered mace; ½ teaspoon cayenne pepper; 1 pint vinegar. Cook for 1 hour. Then add 1lb. sugar. Continue cooking slowly for 2 hours. Rub through fine sieve with wooden spoon and put in dry bottles.

### Peach Chutney

Cut up 6lb. peaches and nearly cover with vinegar. Then add 3lb. brown sugar, 2 to 3oz. salt; 1 small teaspoon cayenne; 2oz. garlic; ¼oz. whole ginger bruised and put in a muslin bag, and 2lb. sultanas. Boil all to pulp. (Taste before bottling.)

### FROM THE MAILBAG

#### Colour Wash

Dear Aunt Daisy,

Could you tell me what is a good lasting colour wash for a rough-cast house? "H.A.S." Auckland.

Put 10lb. of slaked lime into a 4-gallon tin. Dampen with (just) warm water, and place an old sack over the tin. Stand for about 10 minutes—until the tin feels warm. Then add slowly about 1 cup of melted dripping or mutton fat or boiled linseed oil. (My informant used his wife's clean dripping.) Mix all well in, until it forms an even flour paste; then add water—preferably sea-water—to make a wash of suitable consistency for putting on. Leave to stand 2 or 3 hours before using—or else strain. It definitely must not be lumpy. Make your ochre solution, whatever colour you desire, strain it to see that there are no lumps—and then stir it in to get the required colour. The ochre-solution should certainly be strained. It is particularly important that all stirring should be done thoroughly.

#### A Hint That Works

Dear Aunt Daisy,

Last year's preserving was almost a nightmare to housewives, on account of their inability to secure perfect sealing with the caps; and I write this to tell you the worry can be eliminated if we take the advice of "the man" who gave you his method of putting a round of light cardboard inside the brass screw-top to give greater pressure on the seal cap. I have just completed 100 jars of preserves by this method, using seal caps bought last year (I always buy ahead), and, thanks to "the man," I have had 100 per cent. seal, and no caps have lifted so far.

"Help One Another," Christchurch.

How good of you to let us know this. I do hope "the man" will read this page.

#### THE RED MIN TIN.

Sounds like a name from ancient China, but the Red Min Tin is to-day's answer to your furniture polishing worries. Min is the new furniture Wax Cream specially recommended for all highly polished surfaces such as Pianos, Radios, and highly polished furniture. It is the perfect treatment for enamelled surfaces and paintwork. Well known in England, and rapidly gaining popularity in New Zealand, Min is the white cream polish with a hundred uses. A little Min applied on a cloth will quickly remove fingerprints and grime from doors and cupboards. No job is too large or too small for Min. Ask for the red Min tin at your favourite store.

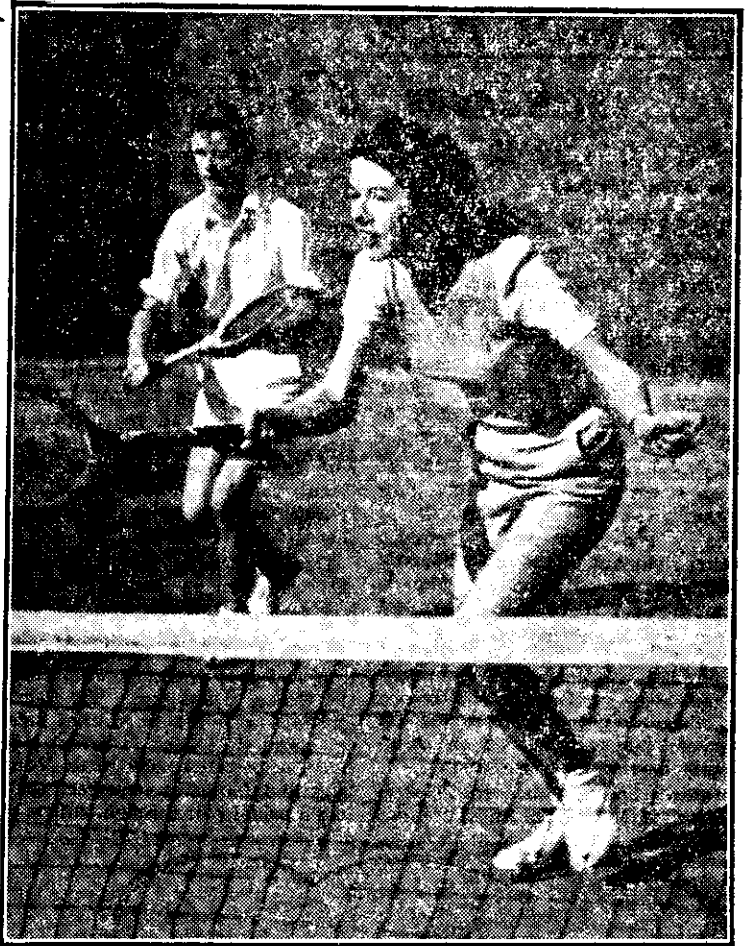
## THE WINNING SHOT!

It's so much easier to shine at sport . . . and at work too . . . when you're bubbling over with energy. You can feel like that if you drink Horlicks every night. Horlicks will restore your lost energy and give you new energy to burn!

Horlicks is a nourishing food drink, rich in the elements your body needs every day. A glass of Horlicks at bedtime makes deep, refreshing sleep a certainty . . . helps soothe tired nerves and build up fresh energy reserves.

What's more, Horlicks is just right for children. They love its flavour . . . and they thrive on its balanced goodness. Always ask for Horlicks — the nourishing food drink that gives you energy to burn! Horlicks Pty. Ltd., Broadway, Palmerston North.

H8-4



## Are you waiting for a phone?

TO put in a new 'phone takes far more than the instrument.



It needs more exchange equipment, cable.



more wire and more

This equipment is scarce all over the world. The

Post Office sent engineers to Britain



as long ago as 1945

to place orders for new equipment.

Contracts for £3,000,000 worth

of telephone apparatus have been let,



but some countries

are in a much worse position, with entire telephone systems

destroyed.



British factories are struggling to meet these

needs. Rates of delivery are slow.

**EQUIPMENT TO MEET THE TELEPHONE DEMAND IS ON ORDER. AS QUICKLY AS IT COMES TO HAND IT WILL BE PLACED IN SERVICE.**

ISSUED BY THE POST OFFICE