

(continued from previous page)

First week: Provincial trials.

Second week: Southland v. Otago, from 4YZ, 4YA and 4ZB; Nelson v. West Coast, from 3YA, 3ZB, 3YZ and 2XN (Canterbury a bye); Wellington v. Auckland, from 2ZB, 2YA, 1YA and 1ZB; Hawke's Bay v. Poverty Bay, from 2YZ and 2XG; Taranaki v. Manawatu, from 2XP and 2ZA.

Third week: Southland-Otago combination v. Canterbury (Nelson-West Coast combination a bye), from all South Island stations except auxiliaries. Hawke's Bay-Gisborne v. Taranaki-Manawatu (Wellington-Auckland a bye) from all North Island stations except auxiliaries.

Fourth week: Nelson-West Coast v. Southland-Otago-Canterbury, from all South Island stations except auxiliaries; Wellington-Auckland v. Hawke's Bay-Poverty Bay-Taranaki-Manawatu, from all North Island stations except auxiliaries.

Fifth week: South Island v. North Island, from all stations except auxiliaries in both Islands.

Sixth week: The "Title Match" from all stations except auxiliaries in both Islands.

## SHORTWAVE HIGHLIGHTS

### Armed Forces Radio Service

BROADCASTING from San Francisco the Armed Forces Radio Service may be heard just now at quite good strength throughout its transmission (3.15 p.m.-2.30 a.m.). The news is read on the hour and any changes in the programme schedule are broadcast during the Conference Periods (3.30 p.m.-3.45 p.m. and 8.15 p.m.-8.30 p.m. daily).

Stations, Frequencies, Wavelengths and Times of Transmission: KCBA, 15.15 mc/s., 19.81 metres (3.15 p.m.-8.30 p.m.); KWIX, 9.57, 31.35 (3.15 p.m.-8.45 p.m.); KGEI, 15.21, 19.72 (5.30 p.m.-10.30 p.m.); KWID, 11.90, 25.21 (5.30 p.m.-11.30 p.m.); KNBX, 15.25, 19.67 (5.30 p.m.-8.45 p.m.); KGEI, 9.53, 31.48 (10.45 p.m.-2.30 a.m.).

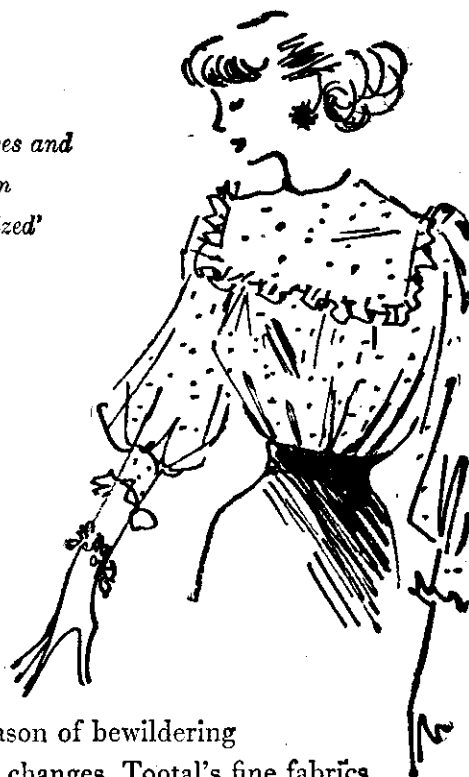
Headlines in the Programmes: 3.15 p.m.-4.0 p.m.—Hymns from Home (Sunday), G.I. Jive (Monday to Saturday). 5.15 p.m.-5.30 p.m.—Passing Parade (Saturday and Sunday). 5.30 p.m.-6.0 p.m.—Angelus (Sunday), Show Time (Monday), To the Rear March (Tuesday), Mail Call (Thursday), Jubilee (Friday). 6.15 p.m.-6.30 p.m.—Boxing (Friday). 6.30 p.m.-7.0 p.m.—Greatest Story Ever Told (Sunday), Bookshelf of the World (Monday), Bill of Rights (Tuesday), Science Magazine (Wednesday), Heard at Home (Thursday), Boxing (Friday), Jill's Juke Box (Saturday). 8.30 p.m.-8.45 p.m.—Purple Heart Album (Sunday), At Ease (Wednesday-Saturday). 8.45 p.m.-9.0 p.m.—Hymns from Home (Sunday), Melody Round Up (Monday-Thursday), Red Harper (Friday and Saturday). 9.45 p.m.-10.0 p.m.—Personal Album (Monday-Wednesday). 10.15 p.m.-10.30 p.m.—Basic Music Library (Sunday to Saturday). 10.30 p.m.-10.45 p.m.—King Cole (Sunday), Magic Carpet (Monday-Saturday). 10.45 p.m.-11.0 p.m.—Personal Album (Sunday), G.I. Jive (Monday-Saturday). 11.30 p.m.-12.0 midnight—Angelus (Sunday), Show Time (Monday), To the Rear March (Tuesday), Command Performance (Wednesday), Mail Call (Thursday), Jubilee (Friday), Jill's Juke Box (Saturday).

### THE POLIFLOR TRIO

Yes, there are three popular Poliflor lines—the well-known Poliflor Wax, the most popular floor and furniture wax in New Zealand. Dark Poliflor Wax for dark wood floors, doors and furniture... and Liquid Poliflor in the handy sprinkler tins.

Here are three good reasons why you should let Poliflor polish your floors and furniture. Poliflor is made from special ingredients which produce quick results, cleaning, polishing and protecting. Dust does not collect on the finished surface because Poliflor produces a non-sticky finish. The Poliflor trio meets all floor and furniture needs. Ask your grocer for Poliflor Wax or Liquid Poliflor.

Exquisite **Robia**, the most delicate and flower-fresh of cottons, is perfect for blouses and for 'special' frocks. In lovely colours, plain or with colours in-woven, it is branded 'Tebilized' for tested crease-resistance.



In a season of bewildering fashion changes, Tootal's fine fabrics come to you in brave new styling—superb new colours. But they're just as reliable and hardwearing as ever!

# TOOTAL

GUARANTEED FABRICS

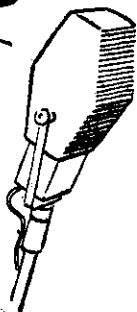
The word 'Tootal' and other brand names mentioned are Registered Trade Marks



## the Latest Hit...

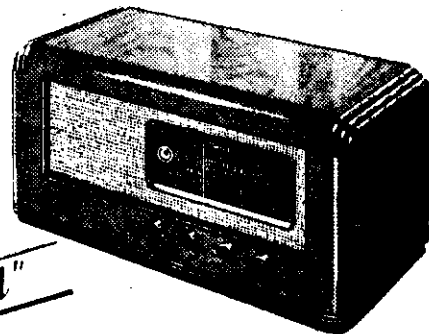
### OR IMMORTAL CLASSICS

brought to you with thrilling realism, phenomenal power and glorious clarity by Pacific "One World." Here is an outstanding 7 valve world-wave radio that hits a new high in listening enjoyment. Rich, colourful, natural tone... crystal-clear delivery... powerful volume... all combined in a distinctively styled cabinet of selected walnut. Pacific radios are available from 4 valve portables to 14 valve radiograms, including dual purpose sets for AC main or battery use. All models are fitted with new dial scales showing amended frequencies.



# Pacific

"One World"



NATURAL TONE RADIO

SOLE DISTRIBUTORS G. A. WOOLLER & CO. LTD., P. O. BOX 2187, AUCKLAND