

NEW ZEALAND LISTENER

Incorporating N.Z. RADIO RECORD

Every Friday Price Threepence

EDITORIAL AND BUSINESS OFFICES:
115 Lambton Quay, Wellington, C.I.
Box 1707, G.P.O.
Telephone 46-520.
Telegrams: "Listener," Wellington.

JULY 23, 1948

CONTENTS	Page
Things to Come - - -	4
Editorial - - -	5
Letters from Listeners -	5, 14
Reforming the Calendar -	6-7
Moura Lympany Interviewed	7
Radio Viewsreel . . . -	8-9
Through New Zealand To-day, XLII - - -	10-11
Walter de la Mare - - -	11-12
Book Reviews - - -	12-13
Shortwave Highlights: The Olympic Games - - -	15
Know Your Classics - - -	17
Film Reviews by Jno. - -	18-19
G.B.S. Birthday Elections -	20
People in the Programmes -	21
Ask Aunt Daisy - - -	22-23
Short Story - - -	24-25
Crossword Puzzle - - -	25

BROADCAST PROGRAMMES
Mon. to Sun., July 26-Aug. 1 26-39

SUBSCRIPTIONS

OVERSEAS. — Twelve months (including postage), Great Britain and British Countries, 17/6; Foreign Countries (including U.S.A.), 20/-.

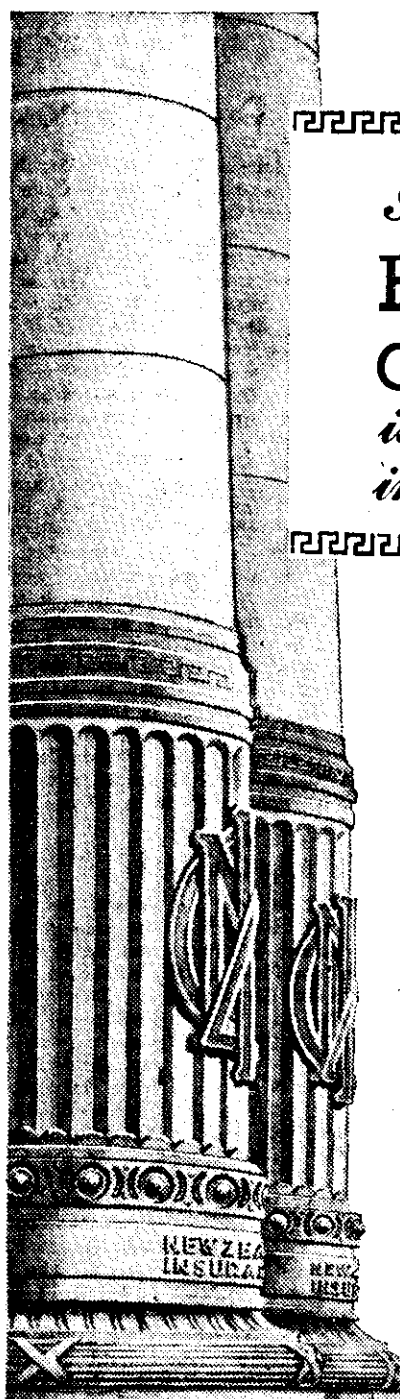
WITHIN N.Z. (Special Rates). — If paid in advance at any Money Order Post Office: Twelve months, 12/-; six months, 6/-; three months, 3/-.

RENEWALS. — Two weeks' notice of renewal is required.

CHANGE OF ADDRESS. — Two weeks' notice required. Please give both the new and the old address.

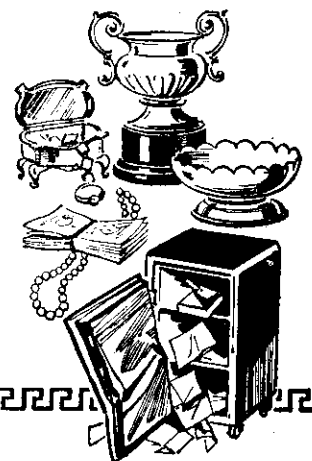
ADVERTISING RATES

Terms on application to the Advertising Manager, "New Zealand Listener," Box 1707, G.P.O., Wellington, N.Z.



"The Pillars of Security"

In the event of
**BURGLARY
OR THEFT**
is *Your* property
insured?



Is it wise to run the risk of considerable financial loss, when for a small premium you can secure a Burglary and Theft Insurance Policy with The New Zealand Insurance Company Limited?

Such a policy will "cover" you in the event of loss by burglary or theft of your household property, valuables, personal belongings or the stock and plant of your business.

There is also the "New Zealand" Householder's Comprehensive Policy which offers in one document cover against fire, burglary, theft, damage by storm, flood, limited compensation for the death of the insured caused by fire or burglars, as well as other benefits.

For information relating to any Burglary and Theft risk consult the Company's nearest Branch or your Local Agent

**THE NEW ZEALAND
INSURANCE COMPANY
LIMITED**

HEAD OFFICE: AUCKLAND

Branches and Agencies  throughout the World



The "Entoleter" is an amazing new invention that controls all infestation in cereals, such as "mill-moth," a condition sometimes erroneously regarded as weevil.

VI-MAX leads again in introducing the "Entoleter" to New Zealand and safeguarding the high quality and perfect condition of this vitalising breakfast and cooking cereal.

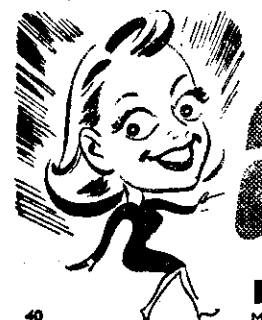
D. H. BROWN AND SON LTD.,
Moorhouse Ave., Christchurch.

HARDY'S ABBREVIATIONS

ats.

means "after-tea suffering"

Too many people suffer indigestion in silence when the remedy is so easily found. A little Hardy's taken after meals, works wonders!



ah!

means "after HARDY'S"

One brief moment after taking Hardy's your indigestion is soothed pleasantly away. "Ah"—people say, "for this speedy relief!"

HARDY'S Indigestion Remedy
Manufactured for R. M. Hardy & Co. Pty. Ltd., 5 Hunter Street, Sydney.