

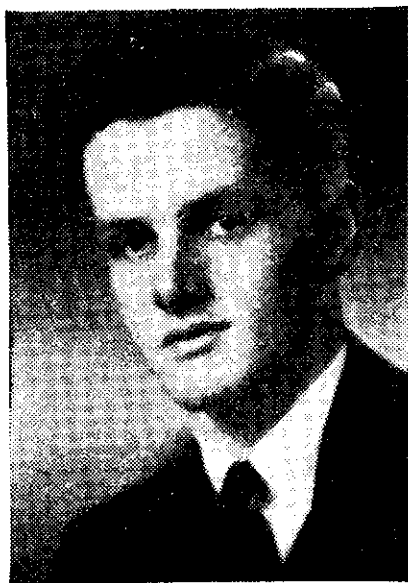
Music by the Modern Britons...

ALTHOUGH warned of failure, the Auckland Lyric Harmonists Choir last year presented a programme of works by the contemporary British composer, Josef Holbrooke. The performance was a success and the choir has been encouraged to prepare another concert of modern British compositions. This year's concert will not be broadcast, but listeners will have an opportunity of hearing most of the items in a series of three broadcasts to be given by the choir and supporting groups from 1YA. The recitals will be given on Wednesday, July 14, at 8.6 p.m., and on the two following Wednesday evenings.

The first broadcast will be given by the Lyric Harmonists Choir and items comprise "Song of Our Fathers," by

early became deeply interested in Hindu philosophy and learnt Sanscrit so that he might study the ancient writings in the original. The choir believes that its presentation of this work will be the first in New Zealand. In the third broadcast there will also be a performance by the Ina Bosworth String Quartet of "Lento espressivo" and "Moderato" from *String Quartet*, Op. 73, by Armstrong Gibbs.

Claude Laurie conducts the choir, and it will be accompanied by Geoffrey Skerrett, a young pianist who recently arrived from India. Accompanist to the Girls' Choral Class is Phyllis Aspland.



Alan Blakey photograph
GEOFFREY SKERRETT

Rutland Boughton, "Dreams," by Granville Bantock, "The Blue Bird," by C. V. Stanford, "A Cradle Song," by John Ireland, "Advance Democracy" and "Hymn to the Virgin," by Benjamin Britten, and "Save Us, O Lord," by Edward Bairstow.

The Auckland Girls' Choral Class and the Ina Bosworth String Quartet will be heard in the second programme. Choral items will be four *Songs of Innocence*—"The Lamb," "A Cradle Song," "Infant Joy" and "The Shepherd"—by Walford Davies, and three hymns from *Pan's Anniversary*—"Of Pan We Sing," "Pan is Our All" and "If Yet Pan's Orgies"—by Geoffrey Shaw, while the Quartet will play "An Irish Melody," by Frank Bridge.

While Christian and pagan religious influence is seen in the compositions included in the second broadcast, in the last recital the three items sung by the Lyric Harmonists, "Battle Hymn," "To the Unknown God," and "Funeral Hymn," owe their composition to the inspiration of Hindu thought. Gustav Holst, composer of the fourteen choral *Hymns from the "Rig Veda,"* from which the choir's selection was made,

NEW ZEALAND LISTENER, JULY 9

REPRINTS IN DEMAND

THE WISDOM OF CHINA, Compiled by Lin Yutang, 15/- posted. A balanced, authoritative and entirely fascinating survey of the enduring elements of Chinese civilisation as expressed in the literature and philosophy of China.

THE WISDOM OF INDIA, Compiled by Lin Yutang, 15/- posted. A selection of Indian writing drawn from the earliest days till now, presenting a deeply impressive view of Indian thought and culture.

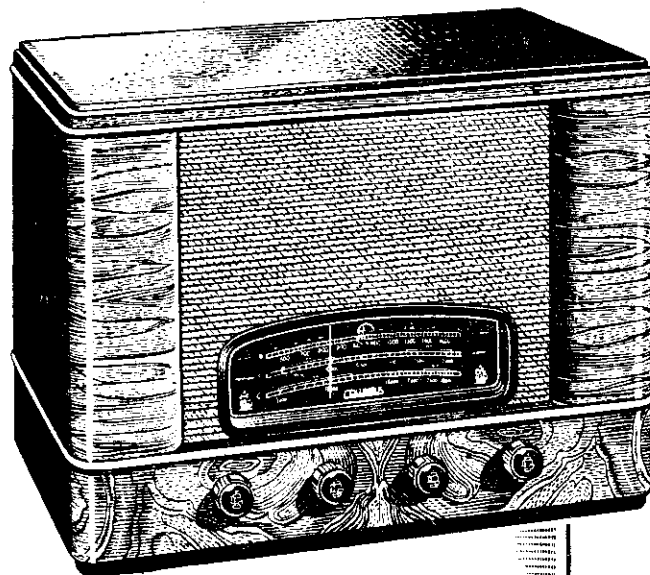
THE READER OVER YOUR SHOULDER, by Robert Graves and Alan Hodge, 16/3 posted. This handbook for writers of English prose is a valuable guide for the potential as well as the actual writer.

THE LETTERS OF ALEXANDER WOOLLICOTT, 18/9 posted. This collection of Woollcott's letters show his many-sided personality—the wit, essayist, literary and dramatic critic, as well as being a book of wide human interest.

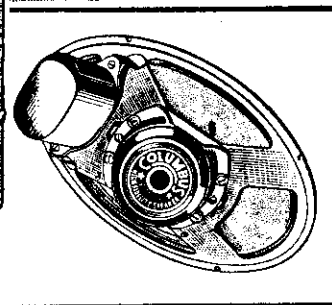
WELLINGTON CO-OPERATIVE BOOK SOCIETY LIMITED
MODERN BOOKS 48A MANNERS STREET, WELLINGTON, C.I. N.Z.

New Principles OF LOUDSPEAKER DESIGN

Model 44 Features The New COLUMBUS Elliptical Loudspeaker



Model 44 "Cambridge"—7-valve all-wave, (incorporating "magic eye" tuning indicator), and utilising the new COLUMBUS 10½" ELLIPTICAL permanent magnet loudspeaker. Height: 14½"; Width: 19½"; Depth: 11". Price £44/10/-.



The new 10½" elliptical loudspeaker used in Model 44 has three basic points of superiority.

1. The magnet incorporated in the loudspeaker is composed of a recently-discovered alloy which greatly increases its magnetic effect. Moreover, the mass of the magnet used in the speaker is considerably greater than is usual, with the result that this loudspeaker possesses improved sensitivity with consequent enhancing of its reproduction quality.

2. By adopting an elliptical shape, a type of loudspeaker diaphragm has been developed which effectively reduces the "resonant peaks" normally present in a loudspeaker. In effect this means that the speaker is capable of a wider range of distortionless reproduction.

3. The type and shape of the speaker diaphragm has the advantage of widening the area of even tonal distribution. This means that in whatever position the listener may be sitting in relation to the radio, he will enjoy a fuller tonal reproduction from its loudspeaker.

We shall be pleased to enlarge upon these points at any time.

UNCONDITIONALLY GUARANTEED FOR 12 MONTHS THROUGHOUT NEW ZEALAND.

COLUMBUS

RADIO

NATION-WIDE SERVICE: Whangarei, Auckland, Hamilton, Paeroa, Rotorua, Tauranga, Gisborne, Napier, Hastings, Dannevirke, Taihape, New Plymouth, Wanganui, Palmerston North, Masterton, Wellington, Blenheim, Nelson, Greymouth, Christchurch, Timaru, Oamaru, Dunedin, Gore, Invercargill.

CZ