

NEW ZEALAND

LISTENER

Incorporating N.Z. RADIO RECORD

Every Friday Price Threepence

EDITORIAL AND BUSINESS OFFICES:
115 Lambton Quay, Wellington, C.I.
Box 1707, G.P.O.
Telephone 46-520.
Telegram: "Listener," Wellington.

JUNE 11, 1948

CONTENTS	Page
Things to Come - - -	4
Editorial - - -	5
Letters from Listeners -	5
Backstage at the Opera -	6-7
Radio Viewsreel - - -	8-9
Small Print and Liability	10-12
U.S. Presidential Elections	13-15
N.Z. Artist Back from London - - -	16-17
Film Reviews by Jno. -	19
Return of Richard Farrell -	20
People in the Programmes -	21
Ask Aunt Daisy - - -	22-23
For Better Radio Reception	24-25
Film Reviews from 4YA -	25

BROADCAST PROGRAMMES
Mon. to Sun., June 14-20 - 26-39

SUBSCRIPTIONS

OVERSEAS. — Twelve months (including postage), Great Britain and British Countries, 17/6; Foreign Countries (including U.S.A.), 20/-.

WITHIN N.Z. (Special Rates). — If paid in advance at any Money Order Post Office: Twelve months, 12/-; six months, 6/-; three months, 3/-.

RENEWALS. — Two weeks' notice of renewal is required.

CHANGE OF ADDRESS. — Two weeks' notice required. Please give both the new and the old address.

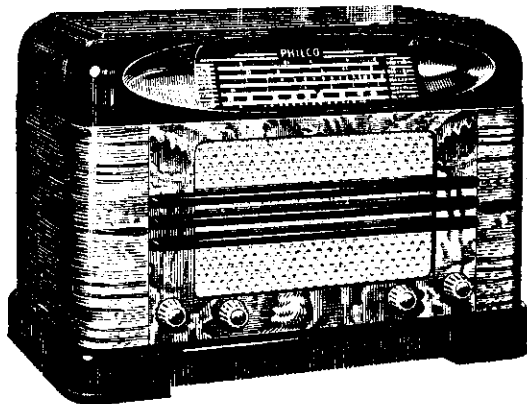
ADVERTISING RATES

Terms on application to the Advertising Manager, "New Zealand Listener," Box 1707, G.P.O., Wellington, N.Z.

World Leadership in Radio



Through more than a half century of pioneer research and development, Philco engineers have led the world in creating vital improvements to radio tone and performance . . . in reaching new standards of radio manufacturing precision and quality. That is why you choose the finest in radio when you buy Philco.



This 1948 Philco 732, although only recently introduced, has proved the biggest-selling Philco ever released in N.Z. A 6-tube, all-wave table model with electrical band-spread tuning, it has no peer in performance, tone, distance-getting ability and appearance. Set and valves fully guaranteed for 12 months. Trade-in allowance on your old receiver and payment by instalments if desired. See your Philco dealer now.

PHILCO

Famous for Quality the World Over

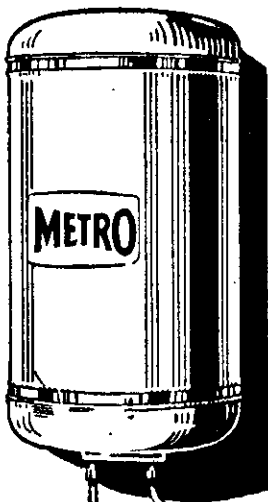
Metro

AUTOMATIC ELECTRIC
WATER HEATER

HOT WATER
Unlimited,
Instantly, Always

Always full of hot water.
No waiting. Just turn a tap.
Controlled by thermostat.
Switches on and off automatically.

Free leaflet from the
METRO-ELECTRIC
& ENGINEERING
CO. LTD., 22 Blair
Street, Wellington.
Phone 54-348.



Also Metro Household Cylinders and Electric Coppers.

MOUSY BLONDES — FADED BRUNETTES

you can LIGHTEN your hair OR you can DARKEN your hair

4-6 LOVELIER
LUSTROUS SHADES
OF YOUR OWN
NATURAL COLOUR
with these
AMAZING
NEW

"MAKE-UP"
SHAMPOOS



STA-BLOND for Fair Hair
— MAKES IT LIGHTER

BRUNITEX for Dark Hair
— MAKES IT DARKER

If your once fair hair has already darkened to a "sort of" colour—mousy, fairish, brownish, Sta-blond will make it 4-6 shades lighter, make it a definite "fair" without ugly bleaching. Sta-blond will keep natural fair hair from going dark.

Enriches and deepens the natural colour of darker hair by 4-6 shades—even those "in-between" tones, not quite black nor brown. Brunitex gives definite colour and beauty to unattractive dark brown and black hair—without ugly dyeing.

Both STA-BLOND and BRUNITEX new "Make-up" Shampoos contain the wonderful new discoveries—Lanacol, Calophol and Colocel. These feed back the natural oil into the hair roots, prevent 'dry scalp', stimulate healthy growth, thickness and beauty—make your hair easy to manage. Wonderful for children's hair. Contains no injurious dyes or bleaches. Try STA-BLOND and BRUNITEX "Make-up" Shampoos today—see what your friends say tomorrow.

STA-BLOND AND BRUNITEX "MAKE-UP" SHAMPOOS
MAKE YOU PRETTIER!

Fassett & Johnson Ltd., Manners St., Wellington.