

NEW ZEALAND

# LISTENER

Incorporating N.Z. RADIO RECORD

Every Friday Price Threepence

EDITORIAL AND BUSINESS OFFICES:  
115 Lambton Quay, Wellington, C.I.  
Box 1707, G.P.O.  
Telephone 46-520.  
Telegrams: "Listener," Wellington.

MAY 14, 1948

CONTENTS	Page
Things to Come - - -	4
Editorial - - -	5
Letters from Listeners - -	5
What of Social Security? -	6-7
Richard Farrell's Tour -	7
Radio Viewsreel - - -	8-9
Scene-Painting for Carmen -	10-11
Book Reviews - - -	12-13
Through New Zealand, XXXIX - - -	14-15
An American Artist in N.Z. -	17-18
Justice and Perry Mason -	18
Crossword Puzzle - - -	19
Noel Coward on the Air -	20
People in the Programmes -	21
Ask Aunt Daisy - - -	22-23
Film Reviews by Jno. -	24-25
Shortwave Highlights -	25

## BROADCAST PROGRAMMES

Mon. to Sun., May 17-23 - 26-39

## SUBSCRIPTIONS

OVERSEAS. — Twelve months (including postage), Great Britain and British Countries, 17/6; Foreign Countries (including U.S.A.), 20/-.  
WITHIN N.Z. (Special Rates). — It paid in advance at any Money Order Post Office: Twelve months, 12/4; six months, 6/4; three months, 3/4.

RENEWALS. — Two weeks' notice of renewal is required.  
CHANGE OF ADDRESS. — Two weeks' notice required. Please give both the new and the old address.

## ADVERTISING RATES

Terms on application to the Advertising Manager, "New Zealand Listener," Box 1707, G.P.O., Wellington, N.Z.

# Back again!



- Brilliant, durable gloss.
- Dries in few hours.
- For exteriors and interiors.
- Will not chip or crack.
- For cars, cycles, boats.
- Furniture or houses.
- Attractive colour range.

# CHINESE LACQUER

STARLINE BRAND  
MADE IN SOUTHEND ENGLAND

From leading retailers everywhere.  
N.Z. Distributors Ltd., 37 Albert St., AUCKLAND

NEW ZEALAND LISTENER, MAY 14

# Save 7½% TARIFF

## with the "SPECIAL SEASON" RATES

at these famous tourist hostels

Waikaremoana . . . Waitomo . . . Mount Cook, New Zealand's most famous hostels offer 7½% reduction in tariff for one full week or more during the following periods only:

WAIKAREMOANA, June 1st to October 31st.

WAITOMO, between June 1st and Dec. 21st.

HERMITAGE (Mt. Cook), September 15th to December 21st and April 1st to May 7th.

Isn't it a sensible idea — to take a really restful holiday when trains and roads are not crowded; to enjoy this perfect chance to relax and recuperate in quiet, restful surroundings; to take your holiday without rush, without worry, without bustle. Any one of these hostels can combine the luxury of good living with the magnificent setting of virgin bushlands, beautiful lakes and peaceful countryside.

a real holiday in

## REST, PEACE and COMFORT

Women in particular will enjoy this chance to rest in supreme comfort—to sit back while someone else prepares the meals, washes the dishes, and makes the beds. Make up your mind now to enjoy a restful holiday during the special-season periods indicated in this advertisement.

POST THIS COUPON for advance particulars

TO GOVERNMENT TOURIST BUREAU,  
Auckland, Rotorua, Wellington, Christchurch, Dunedin  
or Invercargill (or Tourist Agent in your main town).

Please send me details of a holiday for ☐ one ☐ two ☐ three weeks during the special low tariff periods.

NAME \_\_\_\_\_

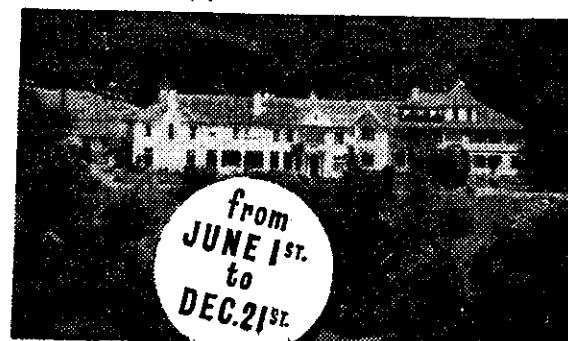
ADDRESS \_\_\_\_\_

WAITOMO HOSTEL ☐ Mark required hostel  
LAKE HOUSE, WAIKAREMOANA ☐ with a cross in square  
THE HERMITAGE (MT. COOK) ☐ provided.

## ★ WAIKAREMOANA



## ★ WAITOMO



## ★ HERMITAGE (Mt. Cook)



Free ADVICE  
and information

Send this coupon to your nearest Government Tourist Bureau or Agent