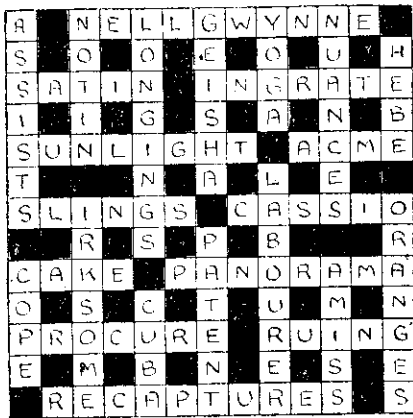


THE LISTENER CROSSWORD

(Solution to No. 386)



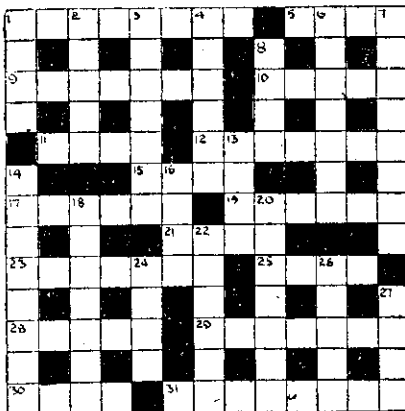
Clues Across

1. Superfluous advice to a pauper?
5. Wagers from 15 across.
9. Slum pie (anag.).
10. This looks like an order to the dog to enter his kennel.
11. This girl is always in gaol.
12. Two parts of an animal make a kind of straw.
15. "He prayeth — who loveth —" ("Ancient Mariner," by Coleridge).
17. Floral decorations.
19. Paring this indicates stinginess.
21. Popular seaside resort near Auckland.
23. In the end they sound like 17 across, but are more likely to be found in the hat than the button-hole.
25. Strange quality to be found in indiscreet actions.
28. Her coral strand is mentioned in the same verse as Greenland's icy mountains.
29. Reach on to a tributary of the Clarence River.
30. A nautical hail re-arranged gives the wax plant.
31. The more of these a book runs to the better for the author.

Clues Down

1. If you hit one, see that it is not your own.
2. Drive out.
3. This might send you to sleep.
4. Short periods of charms?
6. Shut in.
7. "Ay, — to catch woodcocks." ("Hamlet," Act 1, Sc. 3).
8. Chess man.
13. Sketching without the plural of 8 down.
14. Surprise.
16. Catch sight of.
18. Dry pail (anag.).
20. Headgear on top of an arrangement of 13 down which is metaphorically buried at end of a quarrel.
22. Stewart, Some, Long or Quail?
24. Eagle's nest.
26. Naturally to be found in the Old Curiosity Shop.
27. The burden is on us.

No. 387 (Constructed by R.W.C.)



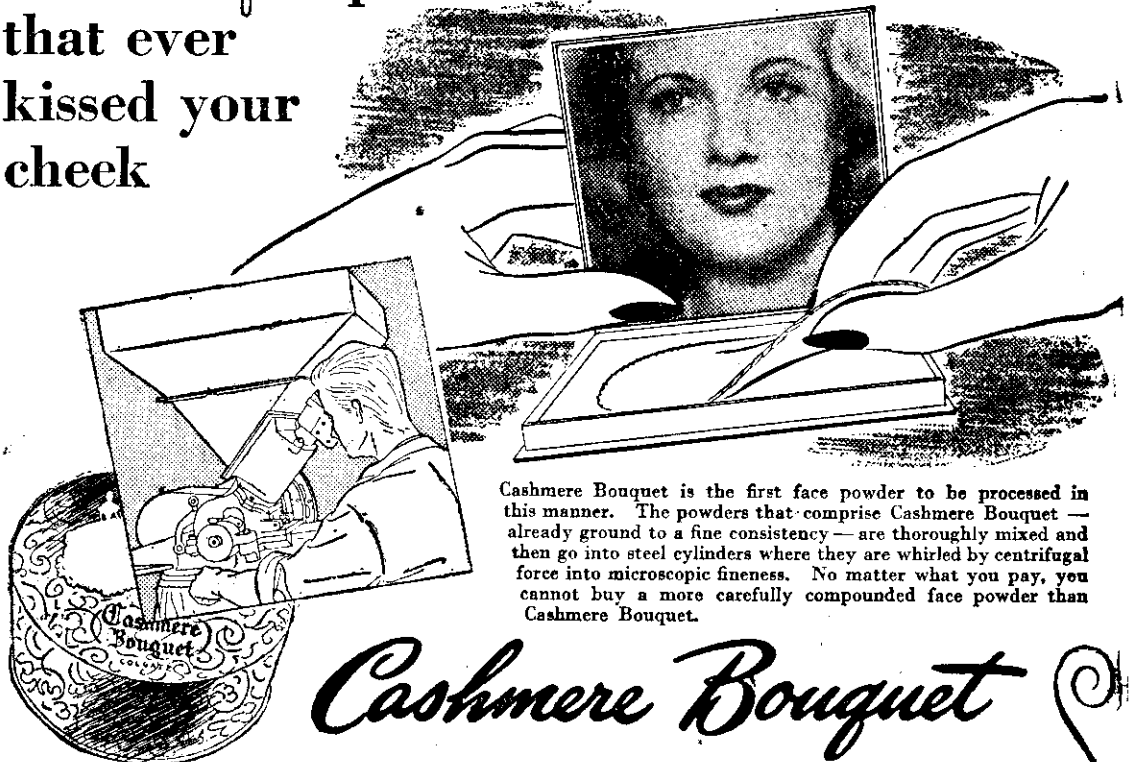
ENGINEERS' AND ENGINE-DRIVERS' EXAMINATIONS

Correspondence courses; also special courses for Engineer Apprentices by former Examiner and Inspector of Machinery:—

GEO. W. MARTIN

Colonial Mutual Buildings,
276 PRINCES ST., DUNEDIN.
P.O. Box 904

Pulverized by 48 steel fingers
revolving 160 times a second
into the *finest* powder
that ever
kissed your
cheek



Cashmere Bouquet is the first face powder to be processed in this manner. The powders that comprise Cashmere Bouquet — already ground to a fine consistency — are thoroughly mixed and then go into steel cylinders where they are whirled by centrifugal force into microscopic fineness. No matter what you pay, you cannot buy a more carefully compounded face powder than Cashmere Bouquet.

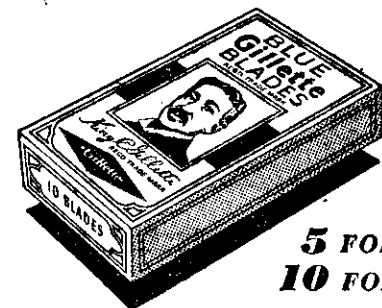
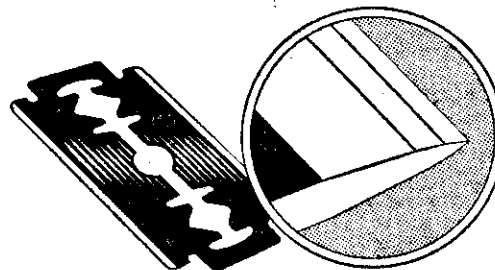
Cashmere Bouquet

COLGATE-PALMOLIVE LTD.,
NEVIS ST., PETONE.

THE FINER FACE POWDER

C11.8

**Gillette put
shoulders behind
each edge!**



**5 FOR 1/9
10 FOR 3/6**

ALL DEALERS

Every cutting edge sharper than a surgeon's scalpel, shaped in three facets, to form strong supporting shoulders which take the strain and increase durability. Precision tested on micro-sensitive machines at every stage, for complete uniformity. Gillette's ceaseless research has proved this the best way to make blades — for shaves that are quicker, smoother, better-looking and more economical.

10.7A

'Good Mornings' begin with Gillette