

# "TE ARO REBUILT"

(continued from previous page)

to all town-planning in New Zealand: the relation of open spaces to the buildings that surround them; with enclosed and sheltered squares for individual pursuits and for civic occasions.

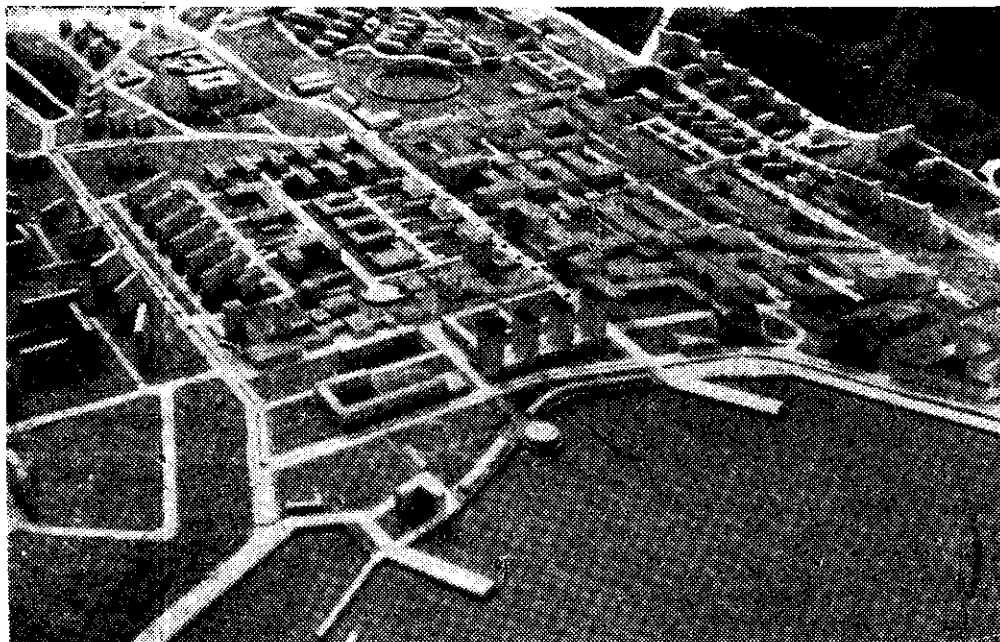
But still another problem has been opened for discussion. Four groups out of the ten have devoted their attention to the residential areas.

## Parks or Gardens

It is notable that the bungalow is not the unit from which they start. But large multi-unit blocks of high population density are dispersed among wide green spaces, parks and sports grounds. This is very different from the usual New Zealand standard of dwelling. In the heart of Wellington a suburban residential scheme with one-eighth of an acre to each house is clearly an anachronism. Indeed most of the old houses in this district have long ago been turned into boarding houses and flats—an economic consequence of the mounting value of the land. Every big city in the world faces this problem. And if there is any solution, it can only be made by approaching the difficulty in a broad and

open scale, in some such way as the students have set about it. For my part, I can never quite see why discussion of this topic generates such heat. The issue is plain, and the decision one of individual preference. Either one can travel daily to Trentham or Eastbourne or Porirua to enjoy one's own garden, or one can live in a flat in a park near the centre of the town. Economic circumstances force the choice on most of us. It is not possible any longer to have a house with a garden in the town.

There are many other controversial problems put forward for discussion in the students' proposal. But let us hope that the Exhibition has succeeded in penetrating, at least, the indifference that Wellingtonians (in self-protection, no doubt) assume towards their surroundings. I am sure that some of them have had their minds stirred to imagine the



WHAT Te Aro could be—a general view of the central exhibit in the architectural section

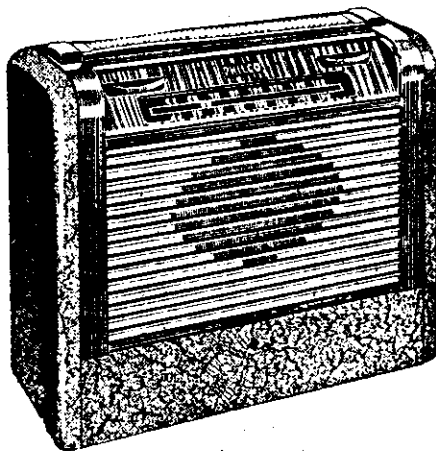
possibilities of a modern town with its feeling of spaciousness and openness, its rhythm, order and scale. If the Exhibition has achieved this, the great effort

and work of the students has been well spent, and it may well be looked back on as a decisive moment in the development of Wellington.

## World Leadership in Radio



For 20 years Philco has been the world's largest selling radio, because, year after year, as a result of unequalled research facilities in the world's greatest radio laboratories, Philco receivers have been unsurpassed for meritorious performance and outstanding quality of every component part, topped by unassailable values. Philco receivers are now manufactured in New Zealand to strict Philco specifications—a splendid tribute to New Zealand industry.



### 1948 PHILCO 6-TUBE PORTABLE.

In your home a powerful, rich-toned receiver operated from your house current; outdoors, the lightest, neatest, easiest to carry and most powerful portable ever built, operating from long-life, self-contained batteries. It's revolutionary—it's another Philco masterpiece. Set and valves guaranteed 12 months. Easy terms of payment. See your Philco dealer to-day.

# PHILCO

*Famous for Quality the World Over*

Ph. 15

## STOP!



those weaning worries



WITH

## ANKORIA BABY FOOD

When Mother can't feed baby from birth—or when normal weaning-time comes—It's time to buy your first supply of Ankoria. Baby will like Ankoria from the very first bottle, and thrive on it too, because Ankoria is the complete, balanced food containing all the health-building elements. Ankoria is at your Chemists in the full 16 oz. and 2½ lb. tins.

**FREE!** BABY BOOK — In a hurry!

Send for Free Baby Book, with feeding tables, to N.Z. Co-operative Dairy Co. Ltd., Auckland. Books despatched "air mail" if expressly requested.