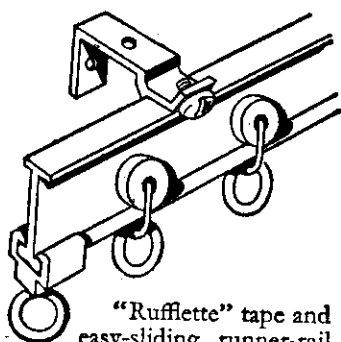




# CURTAINS

*Move at a Touch*  
with "Rufflette"

tape, hooks  
and runner rail



"Rufflette" tape and easy-sliding runner-rail is the very latest method of hanging curtains. "Rufflette" tape with slip-in hooks or rings ensures beautiful, soft folds that are so easy to manipulate . . . a flick of the wrist and the runners slide along the curtain rail.

And "Rufflette" tape and hooks are so very easy to attach. No stitching and fixing. Just sew "Rufflette" tape over the hem at the top of the curtain. Knot the cords at one end and pleat by pulling from other end. Slip hooks into pockets and there you are. Lovely pleated curtains ready to be slipped on to the rail. Any material looks charming hung this way.

"Rufflette" tape, hooks and runner-rail are available at any furnishing counter.

If you have your curtains ready-made, stipulate "Rufflette" curtain requisites: used in all the best workrooms.

At the shop where you buy your curtain fabrics

## 'Rufflette'

Brand

Curtain tape (with hooks or rings) and runner rail

Manufactured by Thomas French and Sons Ltd.,  
London, Manchester, Wythenshawe, Belfast, New York.

4.7b



## Interesting Teapots

No. 1:  
Spode

Josiah Spode the first, established one of England's greatest potteries. He worked in salt glazed stoneware, jasper and basalt as well as in porcelain. The teapot illustrated, made about 1765, is in Egyptian red ware with floral design in pink, yellow, green and blue enamel colours.

Look after an heirloom teapot if you have one—but remember, your usual teapot will give you good tea if you put in BELL, the TEA OF GOOD TASTE.

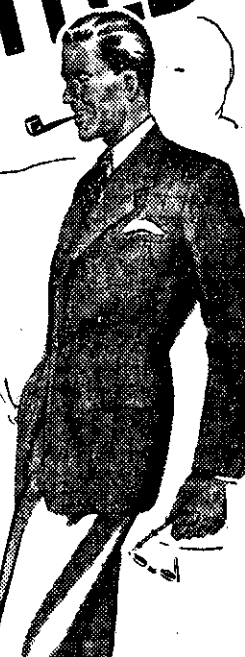
# BELL

THE TEA OF GOOD TASTE

2.7

# PERFECTLY SUITED

IT'S THE PARTS YOU CAN'T SEE THAT MAKE Stylex WORTH SEEING



## Stylex

### CASUAL COAT

Built by the Christchurch Clothing Co. Ltd.

STOCKISTS  
THROUGHOUT  
NEW ZEALAND