



WEBSTER'S **MAMMOTH**
NEW
20TH CENTURY
DICTIONARY

• NEW EDITION
 • 2354 PAGES
 • 2500 ILLUSTRATIONS

EVERYBODY NEEDS A COPY!

Easily the finest dictionary every published—
 with a need in every home library, office,
 business, institution, place of reference,
 school, university! A beautiful durable and
 convenient publication; size 10¾" x 8⅛",
 4½" thickness, weight 13lb.

This "just arrived" Webster's Dictionary is in
 Blue Buckram; stamped in Dark Brown, Red
 and Gold; speckle edged, thumb indexed; with
 31 maps in colour; unabridged and self-
 pronouncing.

SPECIALISED FEATURES ARE:—

Very latest words: stuka, nylon, allergic,
 acquacade, etc. Authors and titles of
 works. Names of fiction, myth, etc. Com-
 mercial and financial terms. Abbrevia-
 tions and contractions, etc. Correction of
 faulty diction. Scriptural proper names
 and Biblical references. Value of standard
 foreign coins. One thousand questions
 answered. Complete atlas and gazeteer
 —index of World.

**Stocks are strictly limited — act promptly
 and answer this message without delay.**

THIS HANDY COUPON BRINGS YOU FULL DETAILS

To: GORDON & GOTCH (AUST.) LTD.,
 EDUCATIONAL BOOK DEPARTMENT,
 AUCKLAND, WELLINGTON,
 CHRISTCHURCH, DUNEDIN.

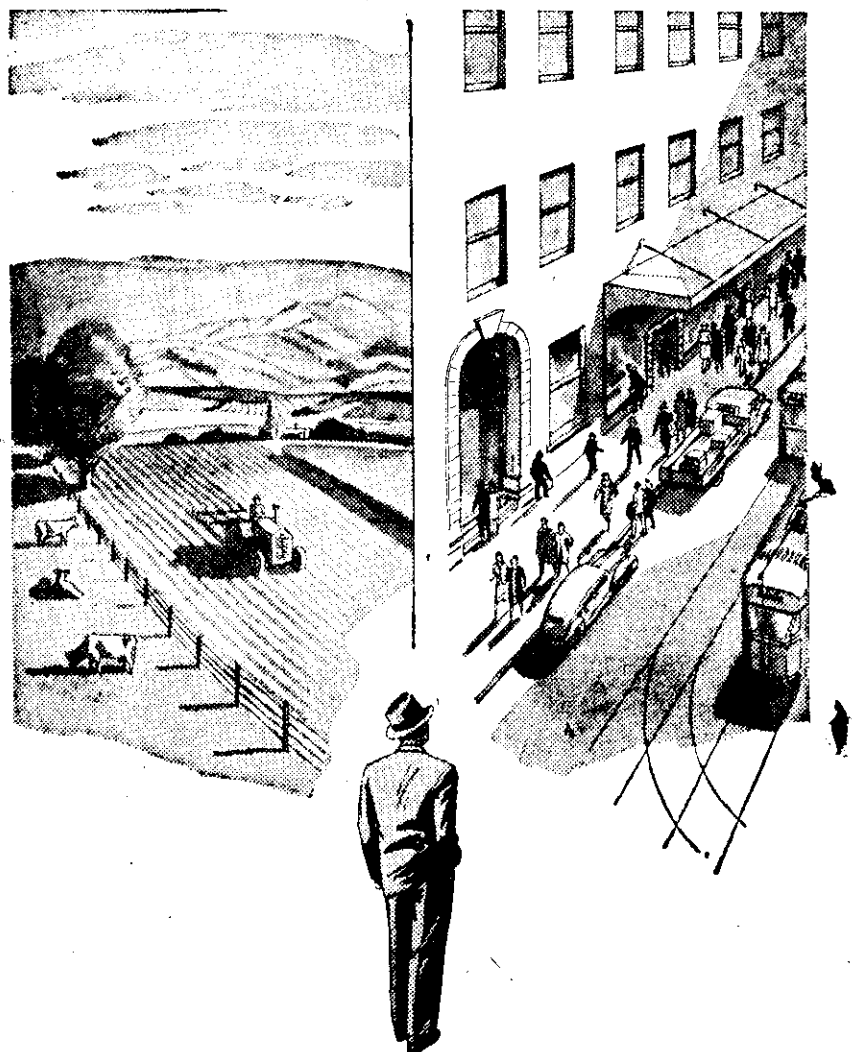
POST COUPON NOW TO THE COMPANY'S NEAREST BRANCH OFFICE

Without any obligation on my part, please send me full details of the new
 1947 "Webster's 20th Century Dictionary."

NAME _____

ADDRESS _____

N.Z.L.



*Are You
 Starting in Business?*

Take advantage of the wide experience
 of the Bank of New Zealand.

Talk over the financial side of your proposition with
 the Manager of the nearest Branch of the B.N.Z.
 He will be very pleased to assist you.

**BANK OF
 NEW ZEALAND**

ESTABLISHED 1861
 Over 250 Branches and Agencies