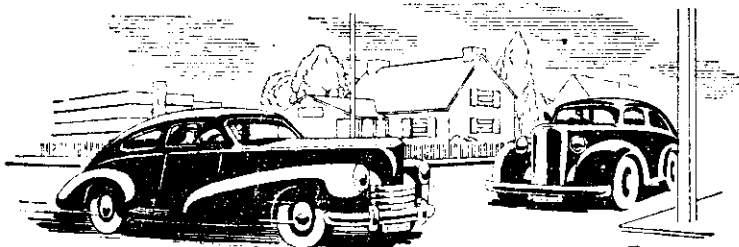


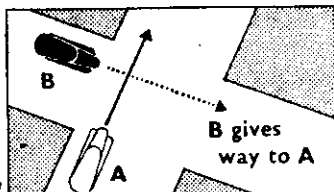
This is the RIGHT HAND RULE



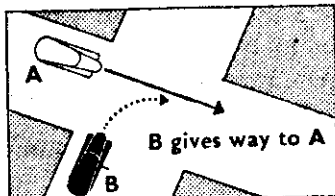
- (1) GIVE WAY TO TRAMS AT ALL TIMES
- (2) GIVE WAY TO TRAFFIC ON YOUR RIGHT
- (3) IF CHANGING DIRECTION TO THE RIGHT, GIVE WAY TO ALL TRAFFIC

For your own safety ...
for the safety of others ...
FOLLOW THE RULES

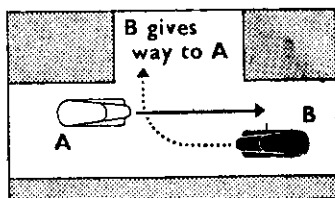
The diagrams show the procedure at typical intersections not controlled by police officer, traffic inspector, traffic lights, or compulsory-stop sign. Study them. Follow them.



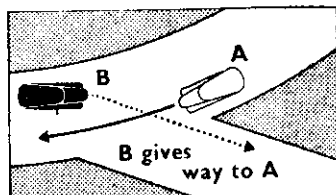
B gives way to A. When each intends proceeding straight ahead vehicle B gives way to A approaching from his right.



B gives way to A. B Indicates intention to turn right and must give way to ALL traffic. A has right of way.



B gives way to A. B has again indicated intention to turn right and must give way to ALL traffic.



B gives way to A. B, who wishes to turn right, must give way to ALL traffic.

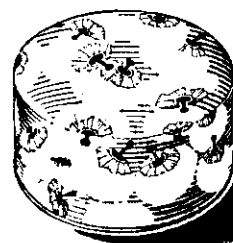
IF IN DOUBT ...
STOP

ISSUED BY THE
TRANSPORT DEPARTMENT.

3.6



If you want
a fine face Powder
choose ...



Air-Spun
FACE POWDER

Obtainable from Chemists, Toilet Salons,
and the Cosmetic Counters of Department
Stores.
Also ... COTY TALC POWDER.

1.7

Agents: Van Staveren Bros. Ltd., 38 Taranaki St., Wellington.



EVERY MORNING...
Rise and SHINE
WITH
**BLACK
KIWI**

From the first day you wear new shoes, shine and nourish them daily with Black Kiwi. You'll wear your shoes longer and with greater satisfaction because Kiwi Shoe-black penetrates leather pores, keeping out the dampness that destroys the best of leathers.

Shoes cleaned with Black Kiwi crease without cracking ... keep their smart appearance longer.

say "Black **KIWI**"
when you buy Shoe-black