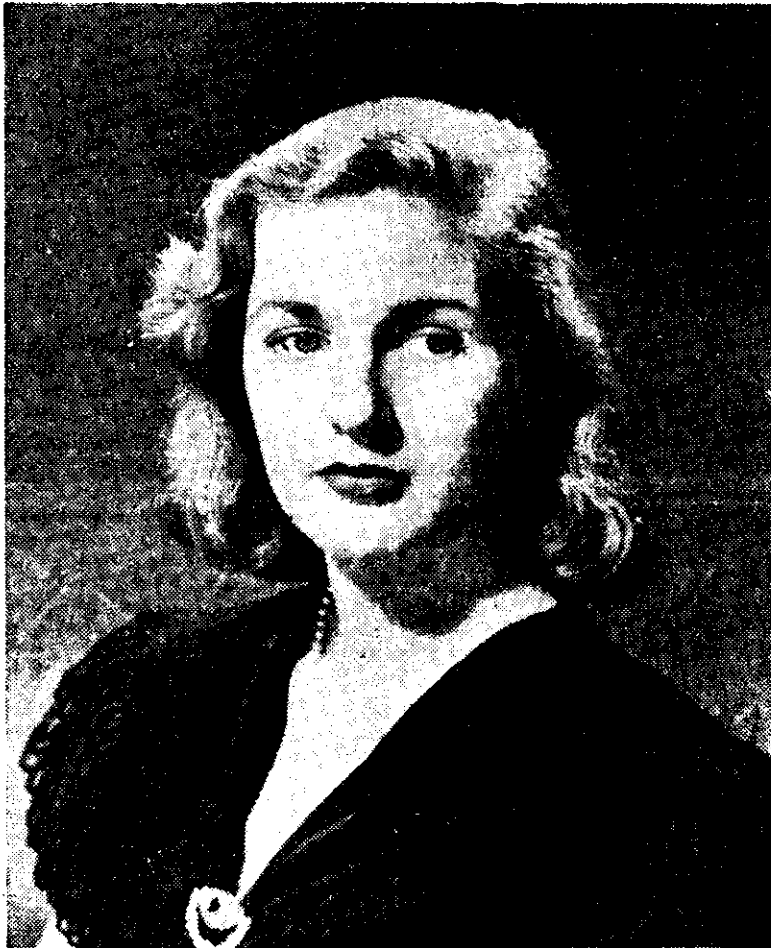


## Miss Cynthia McAdoo

A New York Society favourite, Miss Cynthia McAdoo is young and outstandingly beautiful, with a radiantly fair complexion which she safeguards with Pond's. "It's my favourite beauty treatment," she says. Among the many other famous Pond's beauties are the Countess of Carnarvon, Mrs. Anthony J. Drexell III, Mrs. Ernest L. Biddle, Mrs. Henry C. Mellon, Jr.



### Such a simple and effective beauty care

You'll find that it is only a matter of minutes to keep your skin at its loveliest—with Pond's. Night and morning, and for daytime freshen-ups, too, smooth rich, satiny Pond's Cold Cream over your face and throat. Pat it on with a light upward movement of the fingertips, leave it on a few minutes to release dust and stale

make-up—then wipe it off and notice how spankingly clean, refreshed and smooth your skin feels.

Always before you make-up, pat on a transparent film of deliciously fragrant, gossamer-light Pond's Vanishing Cream. It softens your skin for powder, holds make-up fresh and attractive for hours.



Pond's Cold Cream for thorough skin cleansing. Pond's Vanishing Cream, powder base and skin softener, at all chemists, chain and departmental stores in attractive jars.



P.O. 4

POND'S EXTRACT CO. INTERNATIONAL LTD., BROCK AVE., TORONTO, CANADA

## WITH THE NZBS OVERSEAS

News from WLKW Yamaguchi

IN June of last year Ulric Williams and Linden Martin left New Zealand for Japan to represent the NZBS with the J Force. Now they are acting as officer-in-charge and chief engineer respectively of the new broadcasting station WLKW Yamaguchi, which is giving daily programmes of entertainment and news for New Zealanders in the British occupation zone. According to a report received from Mr. Williams the other day by the NZBS the station went on the air on January 15, introduced to listeners by the Commander-in-Chief of B.C.O.F., Lt-General H. C. Robertson. The official opening was performed later by Brigadier L. Potter, commander of the 2nd N.Z.E.F. (Japan), and during it recorded speeches by the Governor-General, Sir Bernard Freyberg, V.C., and Lt-General Robertson were broadcast.



Spencer Digby photo  
ULRIC WILLIAMS

The new station has a daily schedule of 9½ hours, broadcasting times being from 7.0 to 9.0 a.m., noon to 2.0 p.m., and 5.0 to 10.30 p.m. Radio listeners in New Zealand will be interested to hear that the breakfast session for the men in Japan includes, as at home, light music and musical comedy selections, while the rattle of knives and forks at lunch is accompanied by music in the accepted luncheon style. A hospital session between 1.30 and 2.0 p.m. is addressed to patients in the 6 New Zealand General Hospital and 4 New Zealand Rest Home. This includes requests, greetings and special features.

### News from Home

After dinner music, from 5.0 to 6.0 p.m., there is "Our Programme for Tonight" and 2nd N.Z.E.F. news. Then, till 6.45 p.m., variety takes the air, followed by the New Zealand news, which is divided into three sections—main stories of the day, "news jottings from Auckland to the Bluff," and the world of sport. Swing-fans and seekers after the latest releases have their hour between 7.0 and 8.0 p.m. and then the more serious musically-minded settle down to an hour of the classics.

Between 9.0 and 9.30 there is varied entertainment, but on most evenings at 9.30 a BBC feature is introduced. And the broadcasting day ends with half-an-hour of music "in the quiet mood." There are three plays a week and each Sunday, at 9.0 p.m., a padre conducts a short devotional service. "We hope to begin live shows next week," writes Mr. Williams in his report, which is dated January 29.

The American station WLKH, on the neighbouring island of Kyushu, is anxious to co-operate with WLKW, having lent many American unit programmes on the exchange principle, and also with an exchange of guest announcers.