

(continued from previous page)

Now, I said at the beginning of this talk that there were two major changes affecting the lives of women to-day. The first is the change to a one-class society, which I have been talking about. The other great change is the development of equality between the sexes. Our grandmothers' generation won us legal equality—or at any rate laid the foundations of it. Our mothers' generation won us political equality, and now we are feeling our way towards economic equality. I can't say of this change, as I did of the other, that we in New Zealand have gone as far as any other country.

In fact we tend to lag behind other English-speaking countries. Women in the British Civil Service, for instance, have better status and opportunities than women in the New Zealand Public Service; and there is a greater difference between men's and women's rates of pay here than in the Australian Commonwealth Public Service. How the able and energetic American women hold their own with men in all sorts of activities is well known, and in the American Federal Civil Service men and women have had the same rates of pay since 1923. This is also usual in the various State Civil Services, while six states, including New York and Washington, have even passed Equal Pay Acts prohibiting discrimination between the sexes in paying wages. Here in New Zealand, though women may have the same training as men and the same qualifications, jobs in which they receive the same pay and the same opportunities for advancement are rare.

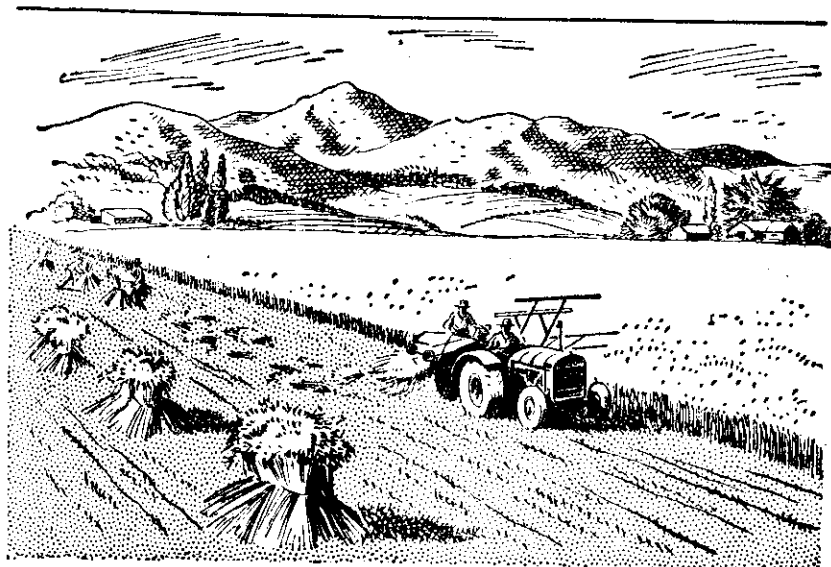
MCC's VISIT

Broadcast Coverage

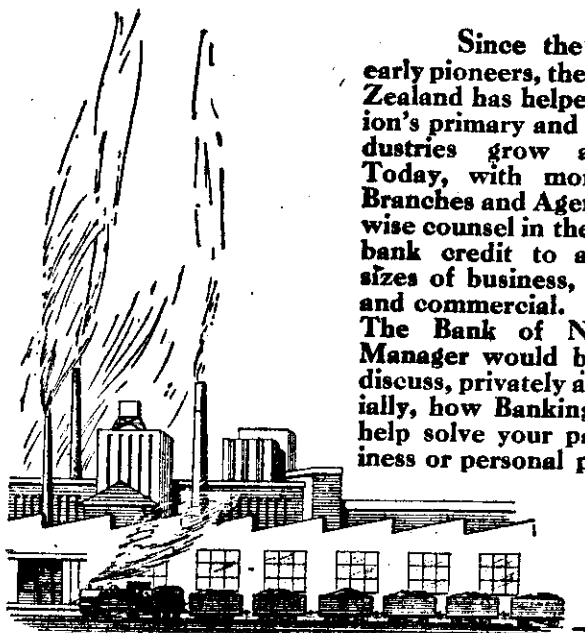
NEW ZEALAND cricketers are looking forward keenly to the visit of the MCC players who will make up the first "official" MCC Test team to come to New Zealand since 1932-33. It was during that visit that Hammond made 227 at Christchurch and 336 not out at Auckland against New Zealand in official Tests. His 336 was a Test record, later broken by Len Hutton, of the present team, who made 364 against Australia in England in 1938.

The matches will be fully covered by the NZBS. When the visitors play Wellington on Monday, March 10, Tuesday, March 11, and Wednesday, March 12, the National station link-up times will be, in the event of an 11.30 a.m. start: 12.0 noon, 12.45, 2.0, 3.30, 4.15, 5.0, 5.30 and 6.0. The 6.0 p.m. broadcast will give the day's scoreboard and a summary of the day's play. This will be repeated at 9.15 and 11.15 p.m. For the match against Otago on Saturday, March 15, Monday, March 17, and Tuesday, March 18, the link-up times will be 11.30 a.m., 12.45, 2.0, 3.0, 4.30, 5.45, 9.15 and 11.15 p.m. Arrangements for radio coverage of the Test match, England v. New Zealand, at Christchurch, on Friday, March 21, Saturday, March 22, and Monday, March 24, and of the match MCC v. Auckland, on Friday, March 28, Saturday, March 29, and Monday, March 31, had not been completed when we went to press. The local National stations will give commentaries in addition to those heard in the National link-ups. Any amendments to the times mentioned will be announced over the air.

NEW ZEALAND LISTENER, MARCH 7



A Vital Factor in the Development of Primary and Secondary Industry



Since the days of the early pioneers, the Bank of New Zealand has helped the Dominion's primary and secondary industries grow and expand. Today, with more than 250 Branches and Agencies, it offers wise counsel in the sound use of bank credit to all types and sizes of business, both farming and commercial. The Bank of New Zealand Manager would be pleased to discuss, privately and confidentially, how Banking service can help solve your particular business or personal problem.

Bank of New Zealand

ESTABLISHED 1861

*Largest Banking Business in the Dominion
and only Bank entirely managed in New Zealand.*