

COLUMBUS



RADIO OF QUALITY with DIVERSITY IN DESIGN

Model 90 is top of the Columbus range of models by virtue of the modernity and unique nature of its technical design. It is in all ways the perfect radio, with calibrated band-spreading for shortwave, discriminatory tone control, peerless tonal quality and handsome appearance. The model is illustrated and described at considerable length in a colour book entitled "Radio Pre-Eminent", which is available upon request.

Details—Model 90 "Endeavour"—£49/10/-.

Height: 14½-inch; Width: 24-inch; Depth: 11½-inch.

Model 90 "Escort"—£26/10/-.

Height: 39-inch; Width: 25½-inch; Depth: 18-inch.

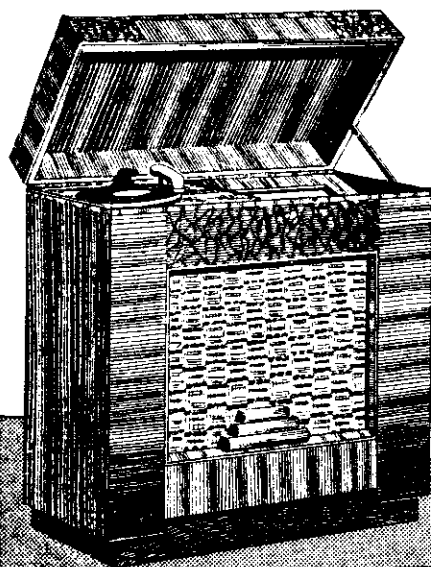
Model 90 "Convoy"—£65.

Height: 39-inch; Width: 27½-inch; Depth: 18-inch.

Model 90 "Squadron"—£74.

Height: 38½-inch; Width: 36-inch; Depth: 14½-inch.

BATTERY MODELS—Models of similar characteristics and of identical appearance are available in all four cabinet styles with vibrator operation from 6-volt battery (Model 96).



Three styles of radio gramophone combination are also available. Details and colour illustrations are included in the book "Radio Pre-Eminent" mentioned above. The dimensions in each case are:—

Radio-Gramophone "Continental"

Height: 34-in.; Width: 34-in.; Depth: 15¾-in.

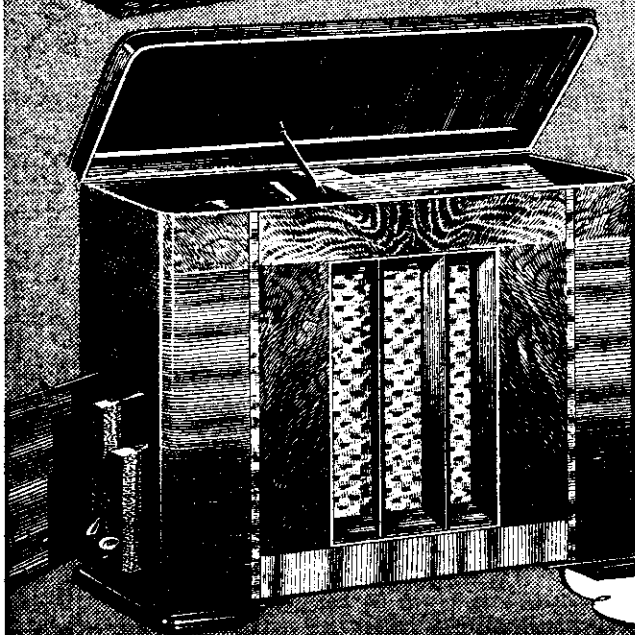
Radio-Gramophone "Caravel"

Height: 32½-in.; Width: 33-in.; Depth: 15¾-in.

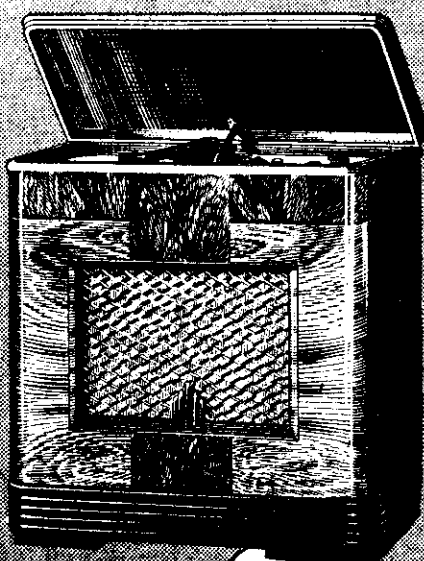
Radio-Gramophone "Flotilla"

Height: 34½-in.; Width: 45-in.; Depth: 18-in.

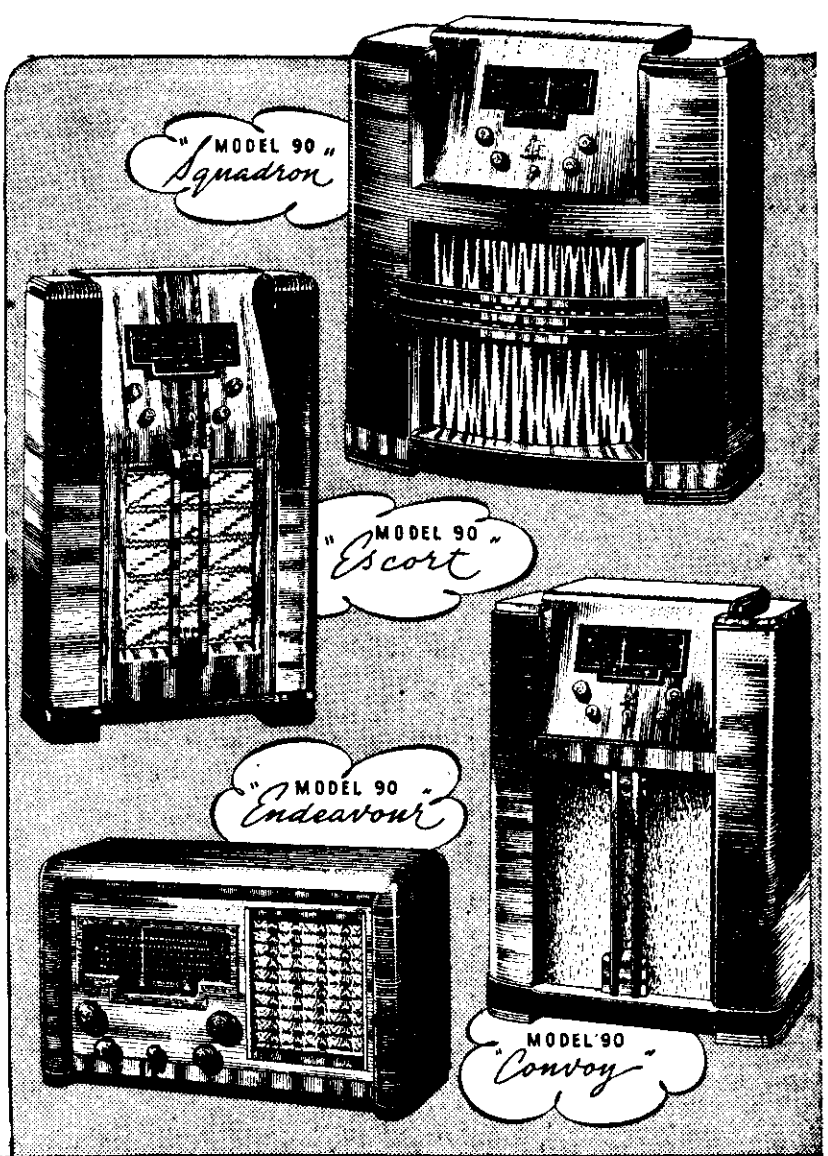
RADIO-GRAMOPHONE
"Continental"



RADIO-GRAMOPHONE
"Flotilla"



RADIO-GRAMOPHONE
"Caravel"



"MODEL 90"
"Squadron"

"MODEL 90"
"Escort"

"MODEL 90"
"Endeavour"

"MODEL 90"
"Convoy"

Guarantee of Performance and Satisfaction
Every COLUMBUS radio is unconditionally guaranteed. For twelve months after sale, we service and attend to each COLUMBUS, at its owner's request, absolutely free of charge. This guarantee is offered without any reservations whatever, and our services will always be promptly, courteously and gladly given. In that way we accept full and unqualified responsibility for the quality and reliability of every radio which bears our name.

COLUMBUS RADIO

NATION WIDE SERVICE:—Whangarei, Auckland, Hamilton, Gisborne, Napier, Hastings, Dannevirke, Taihape, New Plymouth, Wanganui, Palmerston North, Masterton, Wellington, Nelson, Greymouth, Christchurch, Timaru, Oamaru, Dunedin, Invercargill.